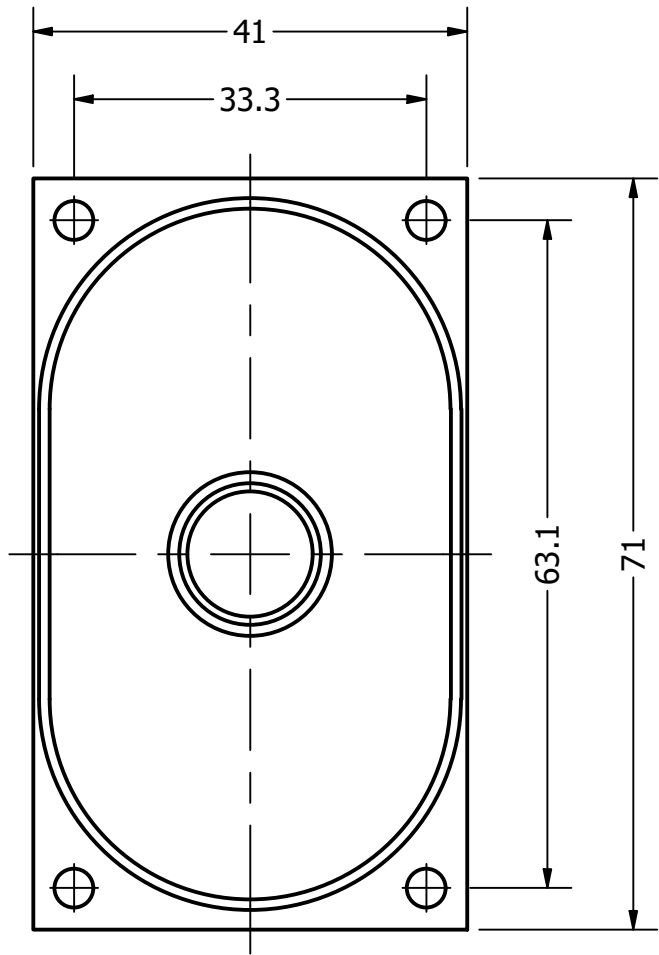
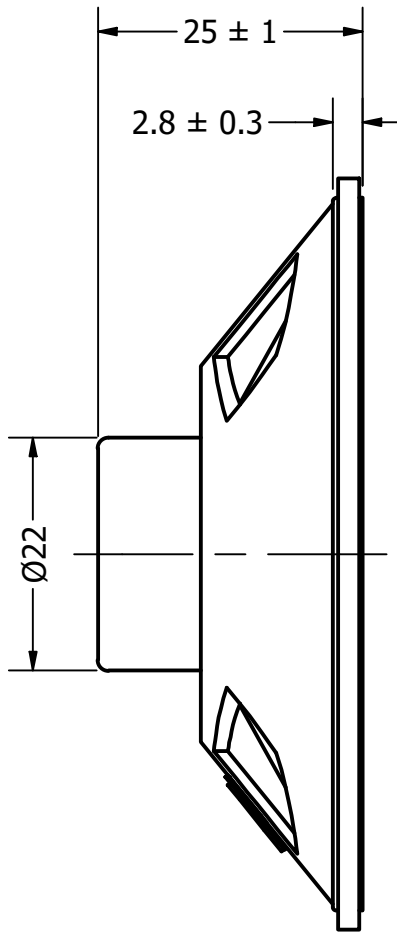


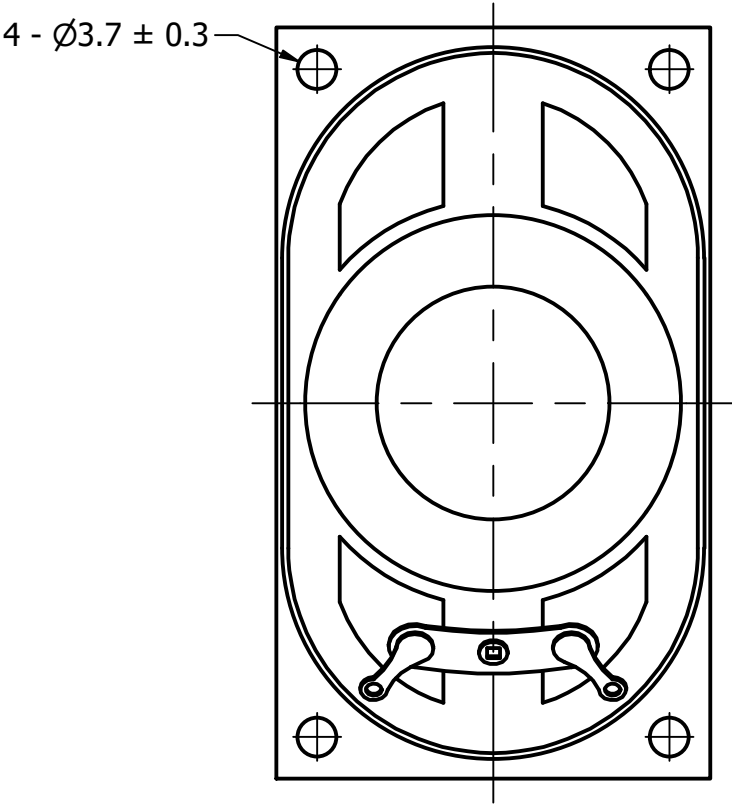
Top View



Side View



Bottom View



Items	Specifications	Conditions				
Sound Pressure Level	100	dB (@ 1W/10cm)				
Resonant Frequency	280 ± 20%	Hz				
Frequency Range	200 ~ 20,000	Hz				
Nominal Power	3	W				
Max. Power	5	W				
Impedance	8	Ω				
Cone Material	Cloth					
Mount Type	Frame Mount					
Storage Temperature	-40 ~ +80	°C				
Operating Temperature	-40 ~ +80	°C				
Weight	38	g				

REVISION HISTORY			
REV	DESCRIPTION	DATE	APPROVED
	Released from Engineering	2/8/2014	J.S.
1	Updated drawing to new template, frequency, SPL, temps	9/4/2019	C.E.

NOTES	
1) All dimensions are in mm unless otherwise noted	
2) All tolerances are ± 0.5 mm unless otherwise noted	
3) All parts meet RoHS	
4) Subject to change or redrawn without notice	

Mouser Electronics

Authorized Distributor

Click to View Pricing, Inventory, Delivery & Lifecycle Information:

[DB Unlimited:](#)

[SC700208-1](#)