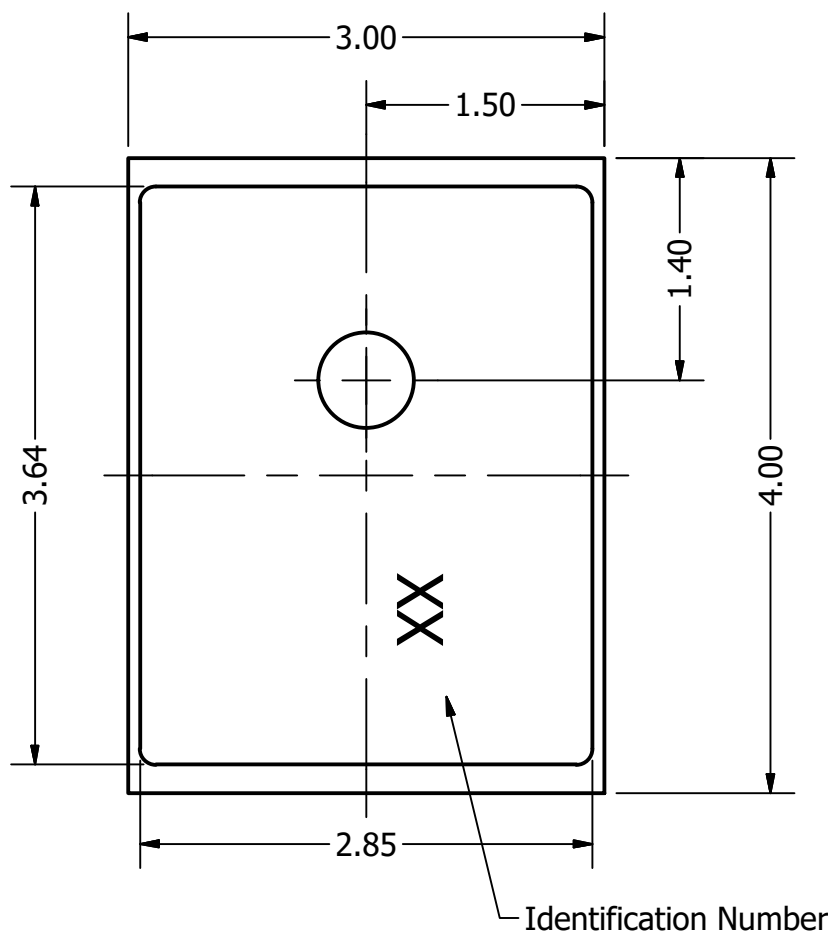


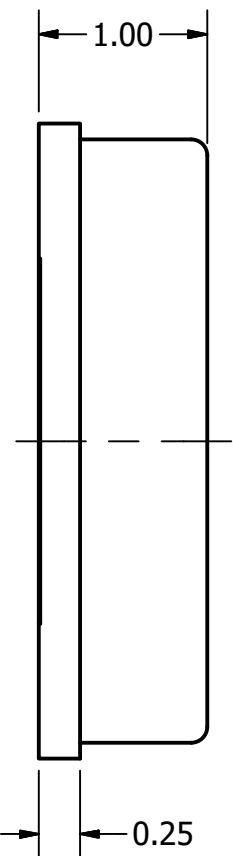


Part Number:	DRAWN	4/25/2016
	CJ	
	CHECKED	4/25/2016
Description:	P.D	
	APPROVED	4/25/2016
Digital MEMS Microphone		J.S
This document contains data proprietary to DB Unlimited. Any use or reproduction, in any form, without prior written permission of DB Unlimited is prohibited. All terms and conditions can be found at www.dbunlimitedco.com		

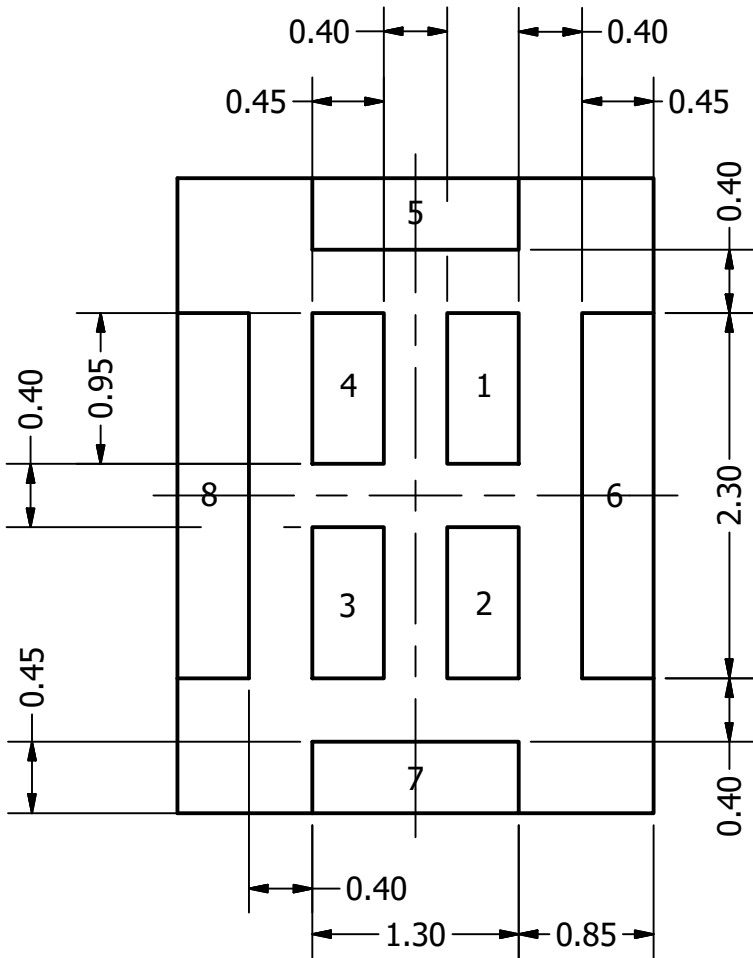
Top View



Side View



Bottom View



PIN 1	PIN 2	PIN 3	PIN 4	PIN 5	PIN 6	PIN 7	PIN 8
CLOCK	OUTPUT	VDD	LR SEL	GND	GND	GND	GND

Items	Specifications	Conditions				
Directivity	Omnidirectional					
Sensitivity	-26	dB				
Frequency Range	100 ~ 7,000	Hz				
Rated Voltage	2.1	V				
Voltage Range	1.64 ~ 3.6	V				
Max. Rated Current	800	μA				
Storage Temperature	-40 ~ +125	°C				
Operating Temperature	-40 ~ +100	°C				
Signal to Noise Ratio	58	dBA				
Max. Rated Current (SLEEP mode)	50	μA				
Mount Type	Surface Mount					
Connection Method	Surface Mount Pads					

REVISION HISTORY			
REV	DESCRIPTION	DATE	APPROVED
	Released from Engineering	4/25/2016	J.S.
1	Updated max rated current, SLEEP current, dimension callout, PIN table	12/21/2017	C.E.

NOTES	
1) All dimensions are in mm unless otherwise noted	
2) All tolerances are ± 0.15 mm unless otherwise noted	
3) All parts meet RoHS	
4) Subject to change or redrawn without notice	

Mouser Electronics

Authorized Distributor

Click to View Pricing, Inventory, Delivery & Lifecycle Information:

[DB Unlimited:](#)

[MM042602-5](#)