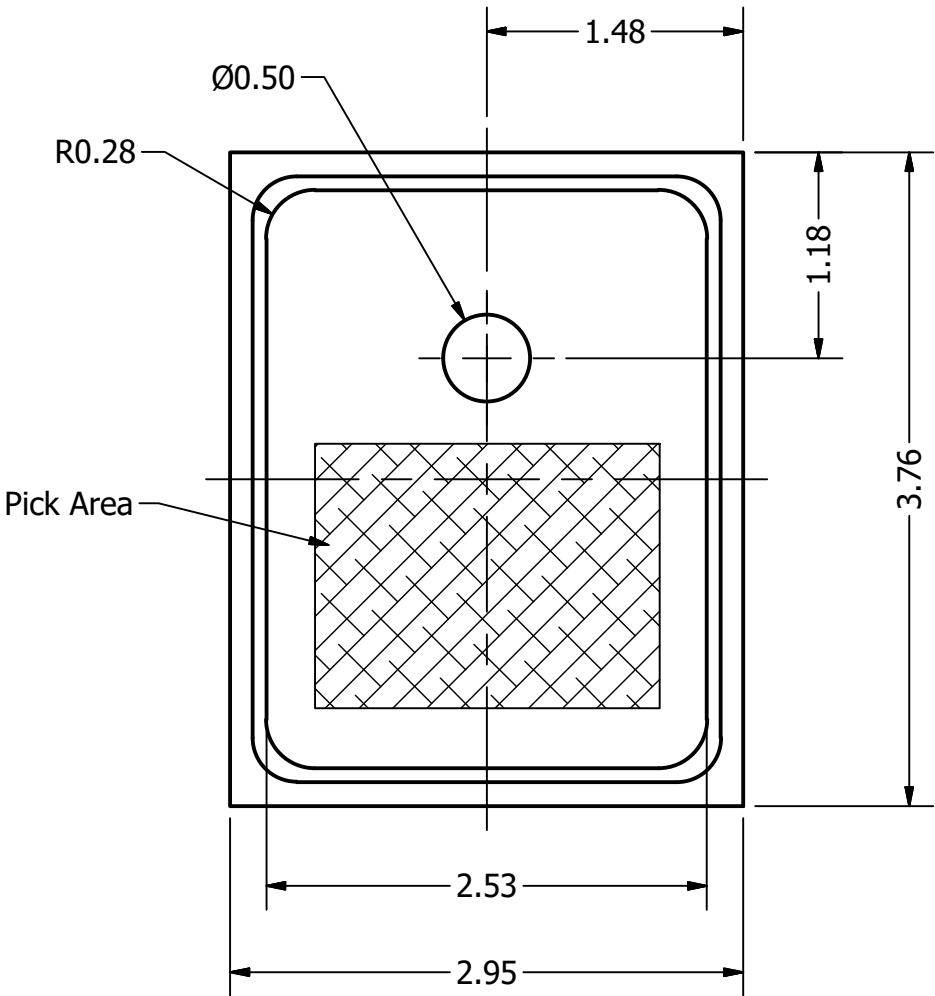


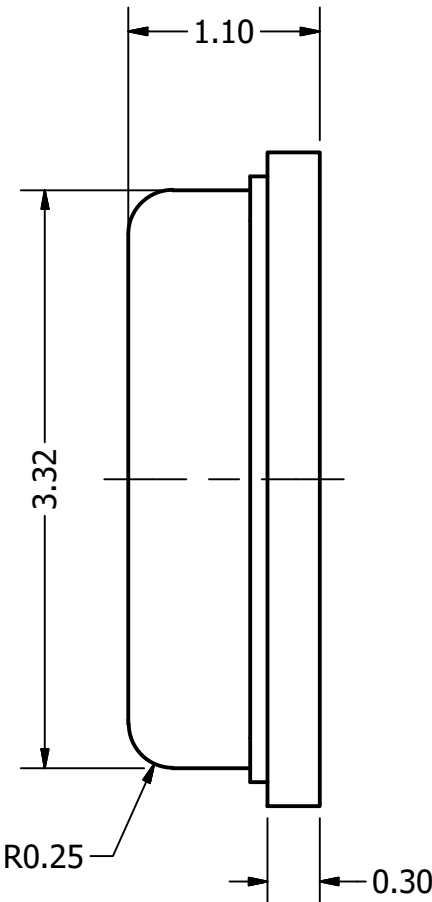


Part Number:	DRAWN	1
	CJ	2/2/2016
	CHECKED	3/18/2016
Description:	P.D.	3/18/2016
	APPROVED	3/18/2016
J.S.		
This document contains data proprietary to DB Unlimited. Any use or reproduction, in any form, without prior written permission of DB Unlimited is prohibited. All terms and conditions can be found at www.dbunlimitedco.com		

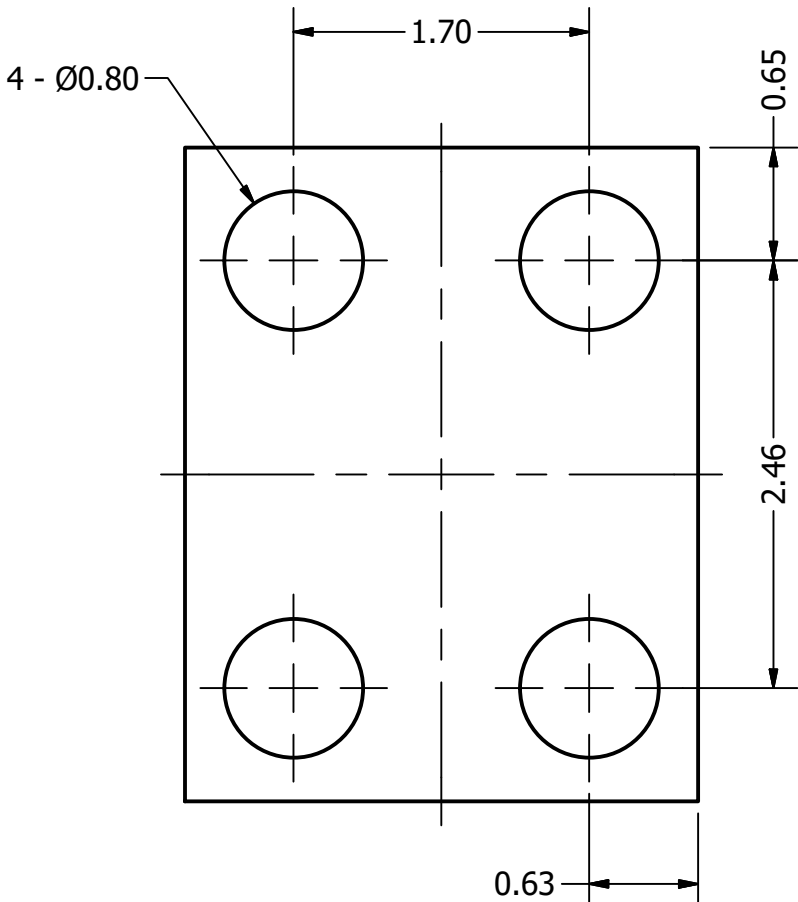
Top View



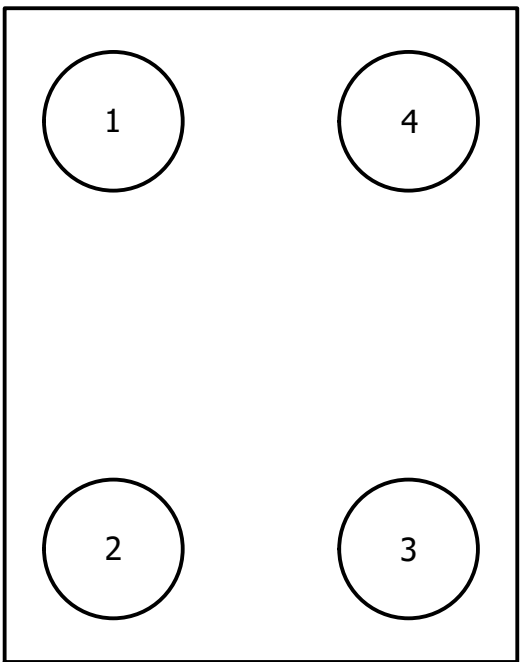
Side View



Bottom View (1)



Bottom View (2)



PINS			
PIN 1	PIN 2	PIN 3	PIN 4
VDD	GND	GND	DATA

Items	Specifications	Conditions				
Directivity	Omnidirectional					
Sensitivity	-42	dB				
Frequency Range	70 ~ 16,000	Hz				
Rated Voltage	2	V				
Voltage Range	1.5 ~ 3.6	V				
Output Impedance	300					
Max. Rated Current	0.16	mA				
Storage Temperature	-40 ~ +100	°C				
Operating Temperature	-40 ~ +100	°C				
Signal to Noise Ratio	58	dB				
Mount Type	Surface Mount					
Connection Method	Surface Mount Pads					

REVISION HISTORY			
REV	DESCRIPTION	DATE	APPROVED
	Released from Engineering	3/18/2016	J.S.

NOTES			
1) All dimensions are in mm unless otherwise noted			
2) All tolerances are ± 0.5 mm unless otherwise noted			
3) All parts meet RoHS			
4) Subject to change or redrawn without notice			

Mouser Electronics

Authorized Distributor

Click to View Pricing, Inventory, Delivery & Lifecycle Information:

[DB Unlimited:](#)

[MM034202-1](#)