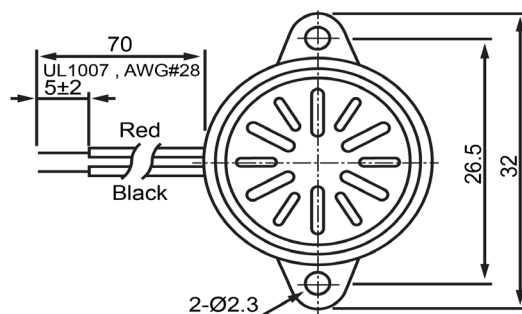
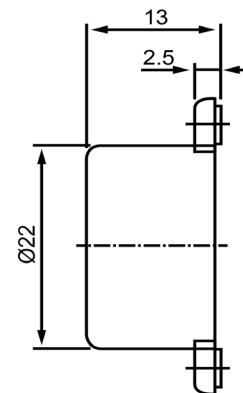



TOP VIEW



SIDE VIEW



| Specifications        |                    |       | Notes  | Revision History |                           |            |            |             |            |
|-----------------------|--------------------|-------|--|------------------|---------------------------|------------|------------|-------------|------------|
| Description           | Value              | Unit  |  | Version          | Description               |            | Date       | Approved    |            |
| Technology            | Electro-Mechanical |       | 1) All dimensions are in mm unless otherwise noted<br>2) All parts meet RoHS         | 1                | Released from Engineering |            | 10/21/2013 | J.S         |            |
| Resonant Frequency    | 3,400              | (Hz)  |  |                  |                           |            |            |             |            |
| Rated Voltage         | 12                 | (V)   |  |                  |                           |            |            |             |            |
| SPL @ 10cm            | 95                 | (dBA) |  |                  |                           |            |            |             |            |
| Tone                  | Single             |       |  |                  |                           |            |            |             |            |
| Mount Type            | Flange             |       |  |                  |                           |            |            |             |            |
| Voltage Range         | 6 ~ 16             | (V)   |  |                  |                           |            |            |             |            |
| Max Rated Current     | 10                 | (mA)  |  |                  |                           |            |            |             |            |
| Housing Material      | ABS                |       |  |                  |                           |            |            |             |            |
| Operating Temperature | -20 ~ +60          | °C    |  |                  |                           |            |            |             |            |
| Storage Temperature   | -20 ~ +60          | °C    |  | Drawn by         | Date                      | Checked by | Date       | Approved by | Date       |
| Weight                | 13                 | (g)   |  | A.B.             | 10/21/2013                | C.E.       | 10/21/2013 | J.S         | 10/21/2013 |
| DB UNLIMITED          |                    |       | Electro-Mechanical Indicator   |                  |                           | IE223412-1 |            |             |            |

# Mouser Electronics

Authorized Distributor

Click to View Pricing, Inventory, Delivery & Lifecycle Information:

[DB Unlimited:](#)

[IE223412-1](#)