

# SFC6000

Quick start guide  
for mass flow controller kit



SENSIRION

# Welcome

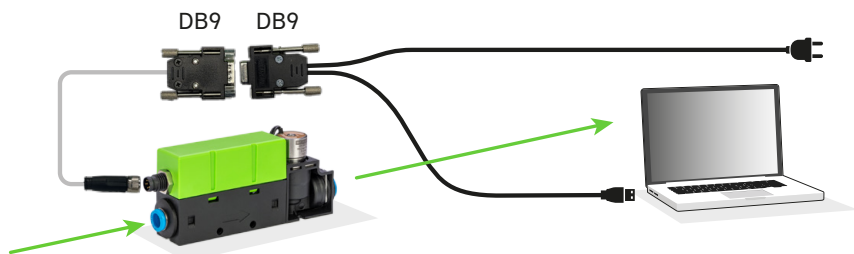
This quick start guide will help you in evaluating SFC6000 in just a few simple steps. All you need is a SFC6000, a PC, a pressurized gas source and the evaluation kit for SFC6000 (sold separately).

Please visit our website for more information on the SFC6000, including the required software: [www.sensirion.com/](http://www.sensirion.com/)

## 01

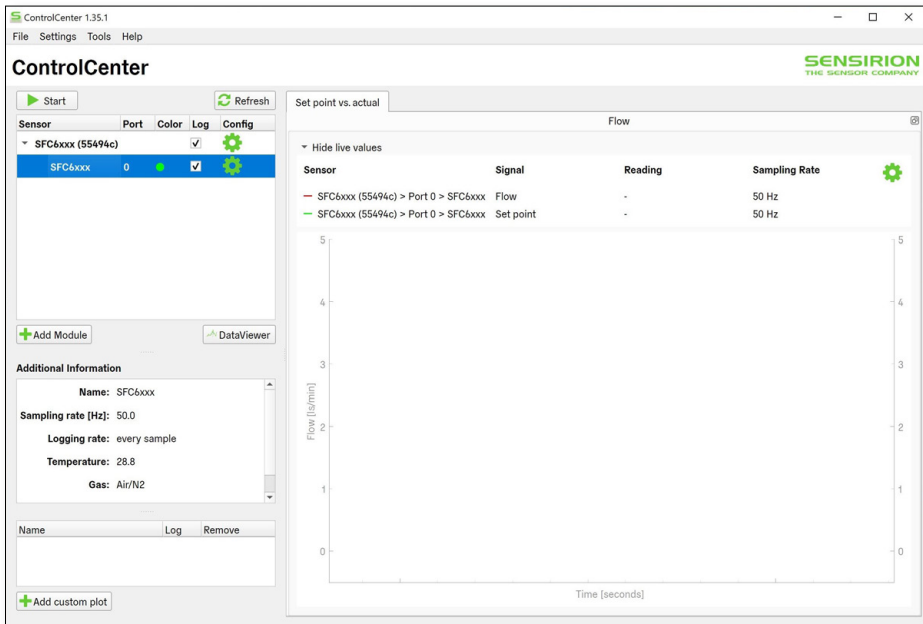
### Set-up

- Install the latest version of “ControlCenter” software.  
<https://sensirion.com/products/sensor-evaluation/control-center/>
- Connect the SFC6000 in the direction indicated by the arrow to a pressurized gas source. For your first test, the outlet can stay unconnected.
- Connect the two DB9 cables together and the one cable with a round end to SFC6000.
- Connect the USB part of the cable to your PC and the power adapter to an electric source.



## Overview of Sensirion ControlCenter

- Start the Sensirion ControlCenter application.
- SFC6xxx should be listed in the sensor window. If it is not listed, the set-up is most likely incorrect and should be reviewed.
- Pressing the wheel symbol opens the configuration window.
- In the configuration window choose the right gas calibration and hit “Done”.
- To start the measurement press “Start”



## Controlling Gas Flow

- Launch the ControlCenter and make sure SFC6000 is connected.
- Press “Start” to begin the recording of the measurement.
- Open the configuration window and specify the desired set point.
- Press “Apply” and hit “Done”.
- Configure the set point to be 0 and press “Stop” to end the evaluation.

**Note:** You need to configure set point to 0, in order to close the valve, else it will remain open.

SFC6xxx - Configuration

General

Connected To **SFC6xxx-0000000085CFFB43\_SFC6xxx@port0**

Serial Number 0000000085CFFB43

Name

Sampling ☒ Rate  Hz ☐ Interval  s

Logging

☒ Log every n-th sample ☐ Log average over n samples

SFC6xxx

Set point:  ls/min

Controller gain:

Gas Calibration: ☒ Air/N2 ☐ O2

**Thank you for your interest  
in our mass flow controller solutions.**

**Sensirion AG**

Laubisrütistrasse 50 · 8712 Stäfa · Switzerland · phone +41 44 306 40 00 · [info@sensirion.com](mailto:info@sensirion.com)  
[www.sensirion.com](http://www.sensirion.com)

# Mouser Electronics

Authorized Distributor

Click to View Pricing, Inventory, Delivery & Lifecycle Information:

Sensirion:

[EK-F5x SFC/SFM6xxx and SFC/SFM5xxx](#)