



Quick Start Guide EK-P5

Quick Start Guide EK-P5

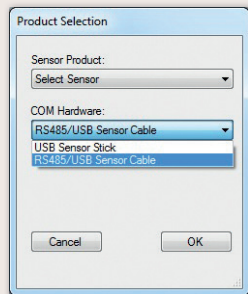
1 **Install FTDI USB driver** for the sensor cable.
(<http://www.ftdichip.com/Drivers/VCP.htm>)

2 **Install software** after download from: www.sensirion.com/USB-viewer

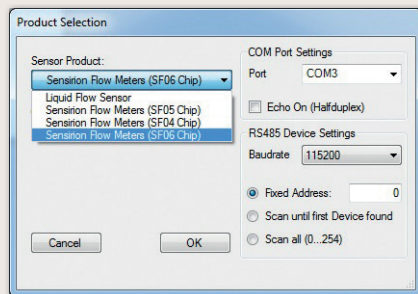
3 **Connect the USB sensor cable** to the sensor PCB and the PC.

4 **Start up the USB RS485 Sensor Viewer.**

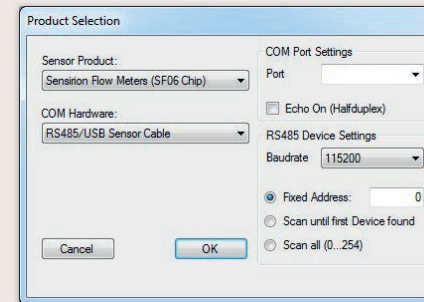
5 Under COM Hardware, **select «RS485/USB Sensor cable».**



6 **Select the sensor product «Sensirion Flow Meters (SF06 Chip)».**

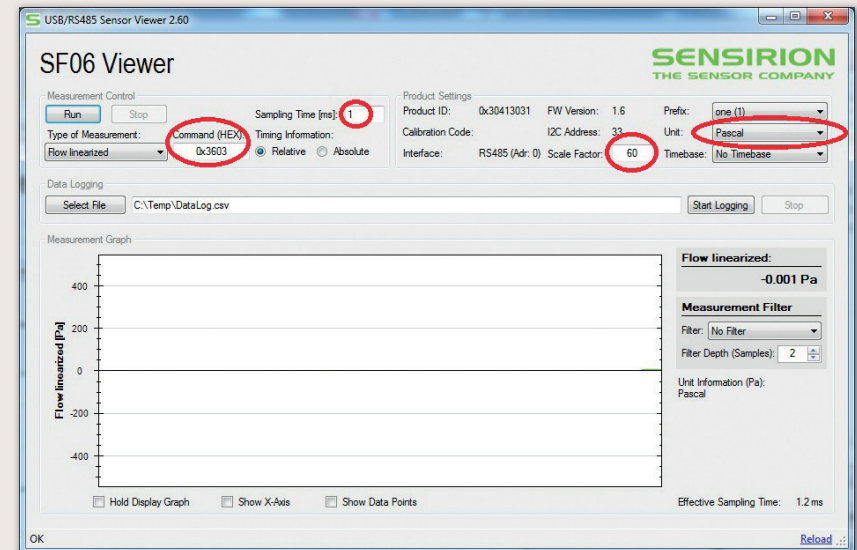


7 **Select COM port** and press «OK». Highest COM port is most often correct.



8 The SF06 Viewer appears. Adjust the **following settings** first:

- Change units to «Pascal».
- Set scale factor to 60.
- Set sampling time to 0.5ms or more.
- Enter command HEX 0x3603.



9 **Press «Run».**

For more information about Sensirion's differential pressure sensors of the SDP800 series, please visit www.sensirion.com/sdp800 or contact our technical customer support team:

SENSIRION AG

Laubisruetistrasse 50

8712 Staefa

Switzerland

Phone + 41 44 306 40 00

Fax + 41 44 306 40 30

info@sensirion.com

www.sensirion.com

Mouser Electronics

Authorized Distributor

Click to View Pricing, Inventory, Delivery & Lifecycle Information:

Sensirion:

EK-P5