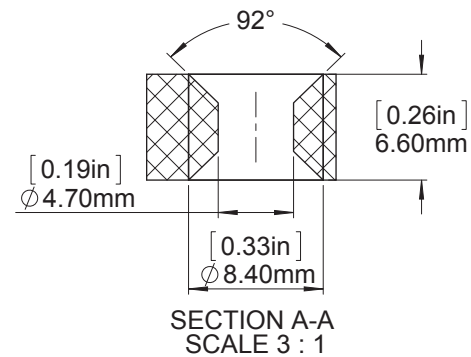
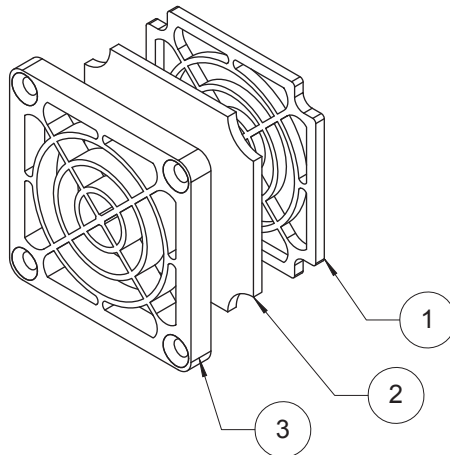
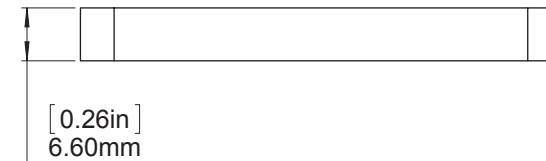
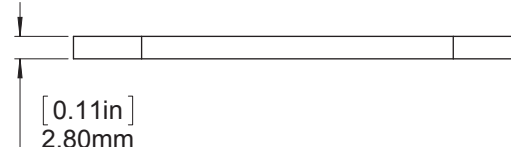
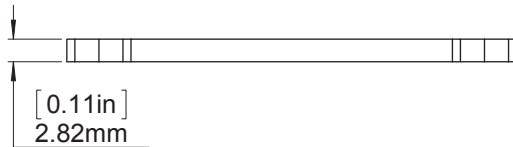
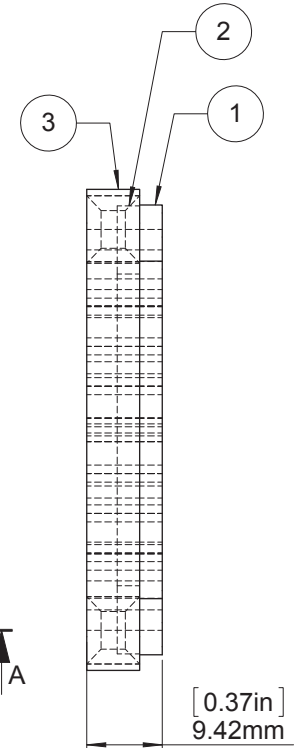


Technical drawing of a square plate with a circular pattern. The plate has a square outer boundary with rounded corners. Inside, there is a circular pattern consisting of three concentric circles and a central cross-like shape. A dimension line at the top indicates a width of 56.10mm, which is equivalent to 2.21in.

Technical drawing of a square plate with a central circular feature and four corner holes. Dimensions include 60mm total width, 50mm inner width, 1.97in inner width, 0.19in hole diameter, and 4.70mm hole diameter. Section lines A-A are shown at the bottom right.



ITEM NO.	DESCRIPTION	MATERIAL	QTY.
1	RETAINER	Plastic UL94V-O	1
2	FILTER	Polyurethane Foam UL94HF-1 45PPI	1
3	GUARD	Plastic UL94V-O	1

[illegible]

Mouser Electronics

Authorized Distributor

Click to View Pricing, Inventory, Delivery & Lifecycle Information:

[Sunon:](#)

[FG-6/45](#)