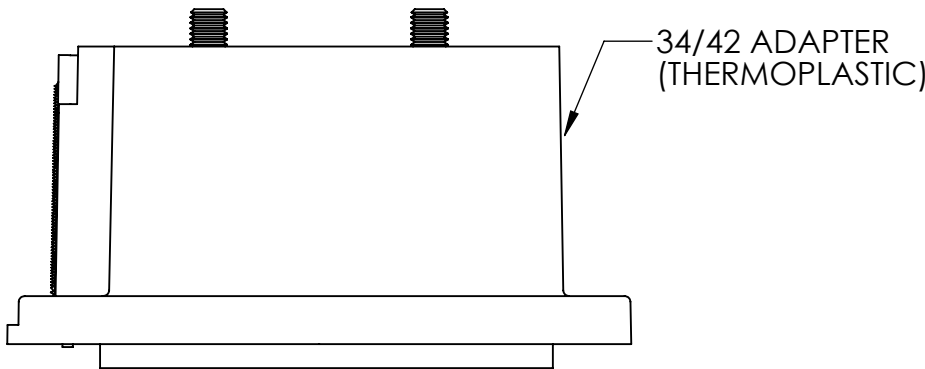
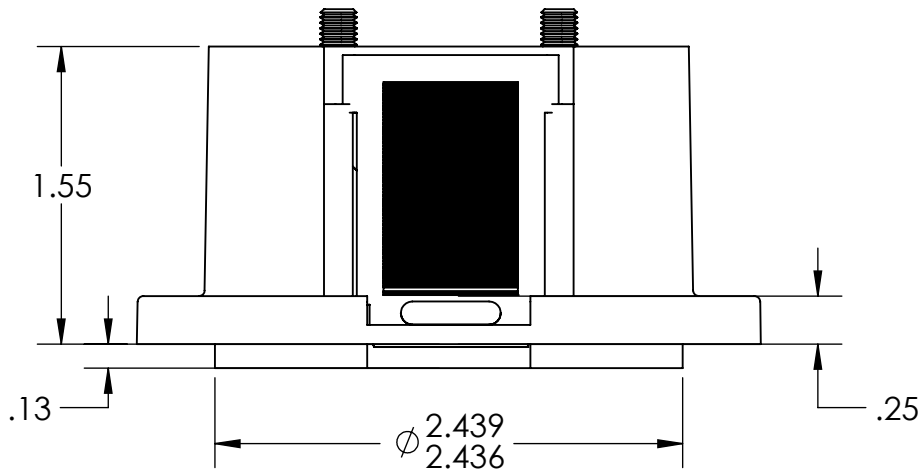
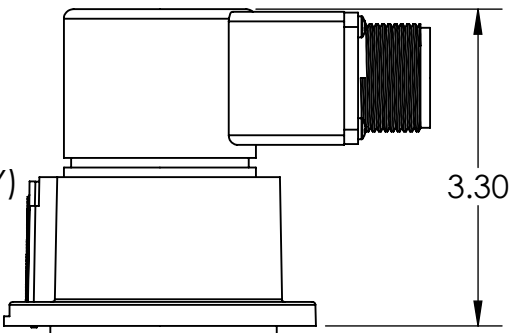


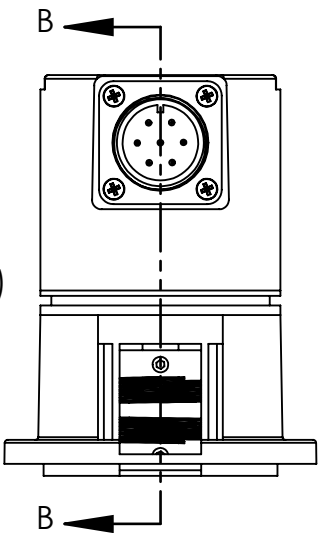
ZONE	REV.	REVISION DESCRIPTION	ECN NO.	DATE
	A	Ø1.625 WAS Ø1.875	10893	01/19/22



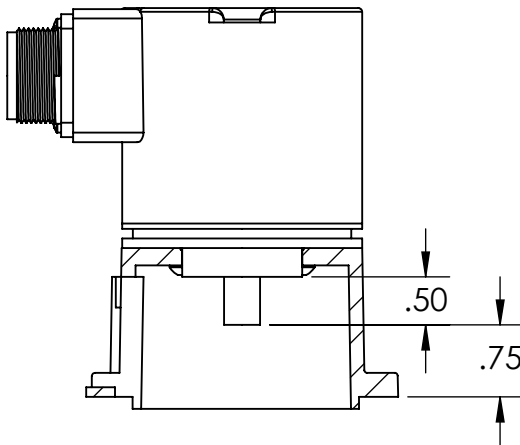
SHOWN WITH
H20EB-F12
(SOLD SEPARATELY)



SHOWN WITH H25E-F45 AND
COUPLING (SOLD SEPARATELY)

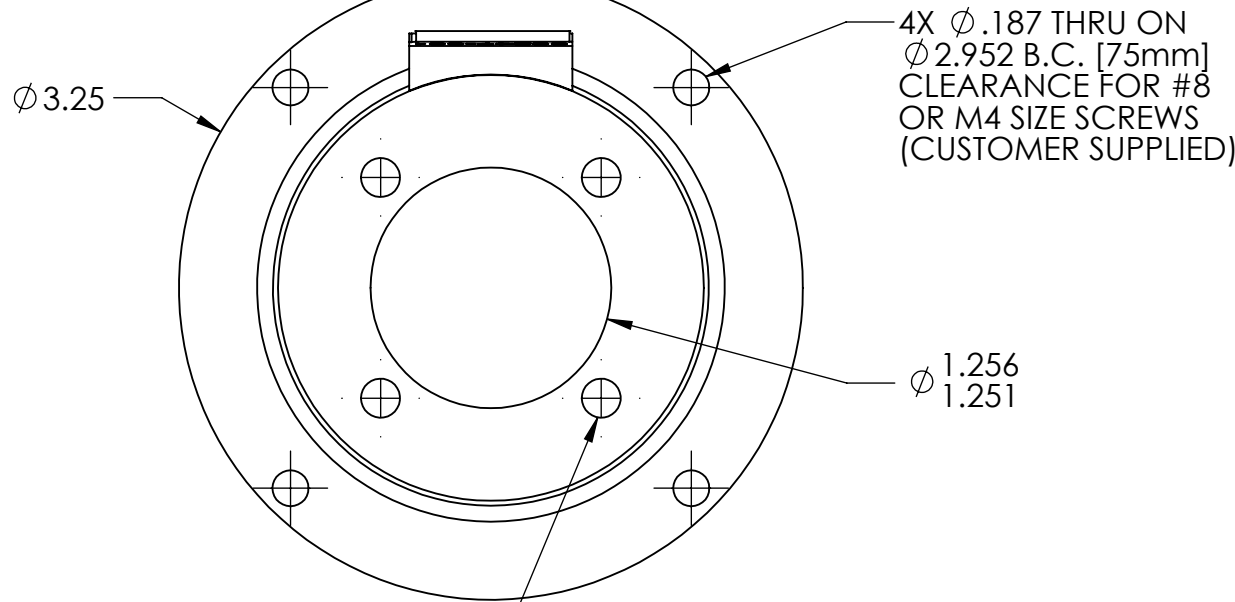


SHOWN WITH SLIDING
PLATE REMOVED



SECTION B-B
SCALE 1 : 2

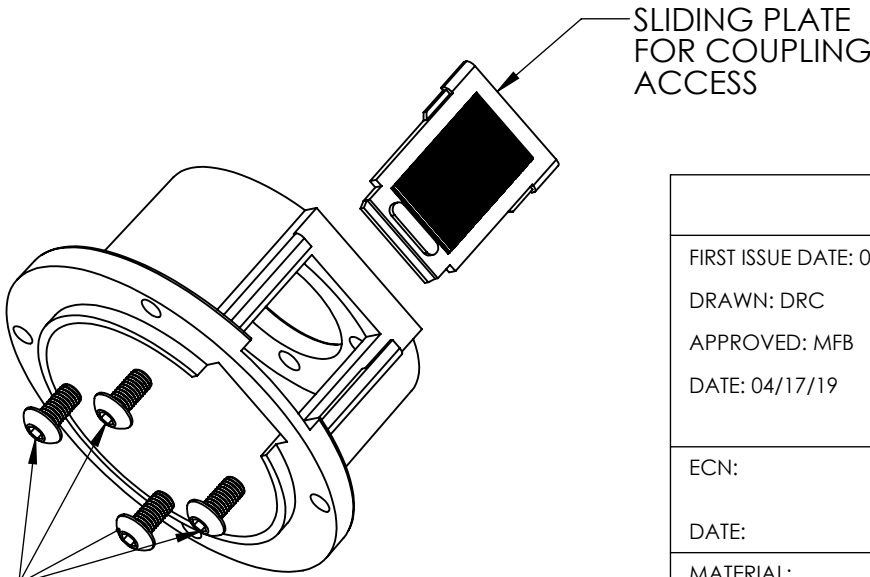
NOTE: USE ENCODER WITH .50 SHAFT EXTENSION FOR PROPER CLEARANCE



4XØ .203 THRU ON Ø 1.625 B.C.
(FITS H25E WITH F45 AND
H20E WITH F12)

KIT INCLUDES:
34/42 ADAPTER, SCREWS
AND ACCESS PLATE

4X #10-32 X 3/8
BUTTON HEAD
SCREWS (1/8 HEX)



UNCONTROLLED COPY				BEI SENSORS 1461 LAWRENCE DRIVE THOUSAND OAKS, CA 93120	
FIRST ISSUE DATE: 04/17/19	SENSATA TECHNOLOGIES PROPRIETARY AND CONFIDENTIAL. NEITHER THIS PRINT NOR THE INFORMATION CONTAINED HEREON IS TO BE USED AGAINST THE INTERESTS OF SENSATA TECHNOLOGIES OR AGAINST THE INTERESTS OF ANY OF ITS AFFILIATED COMPANIES OR WHOLLY OWNED SUBSIDIARIES.			TITLE P/N 31170-001 NEMA 34/42 MOTOR ADAPTER KIT FOR H20/H25	
DRAWN: DRC	INTERPRET DIMENSIONING AND TOLERANCING PER ASME Y14.5-2009. UNLESS OTHERWISE SPECIFIED DIMENSIONS ARE IN INCHES[MILLIMETERS] AND ARE INTENDED AS NOMINAL SEE PRODUCT SPECIFICATIONS FOR MORE DETAILS.			SIZE B	REV. A
APPROVED: MFB				DWG NO. 09908-001	
DATE: 04/17/19				SCALE 1:1	SHEET 1 OF 2
ECN:				SOLIDWORKS	
DATE:					
MATERIAL: THERMOPLASTIC, CRES STEEL	DO NOT SCALE DRAWING	THIRD ANGLE PROJECTION			

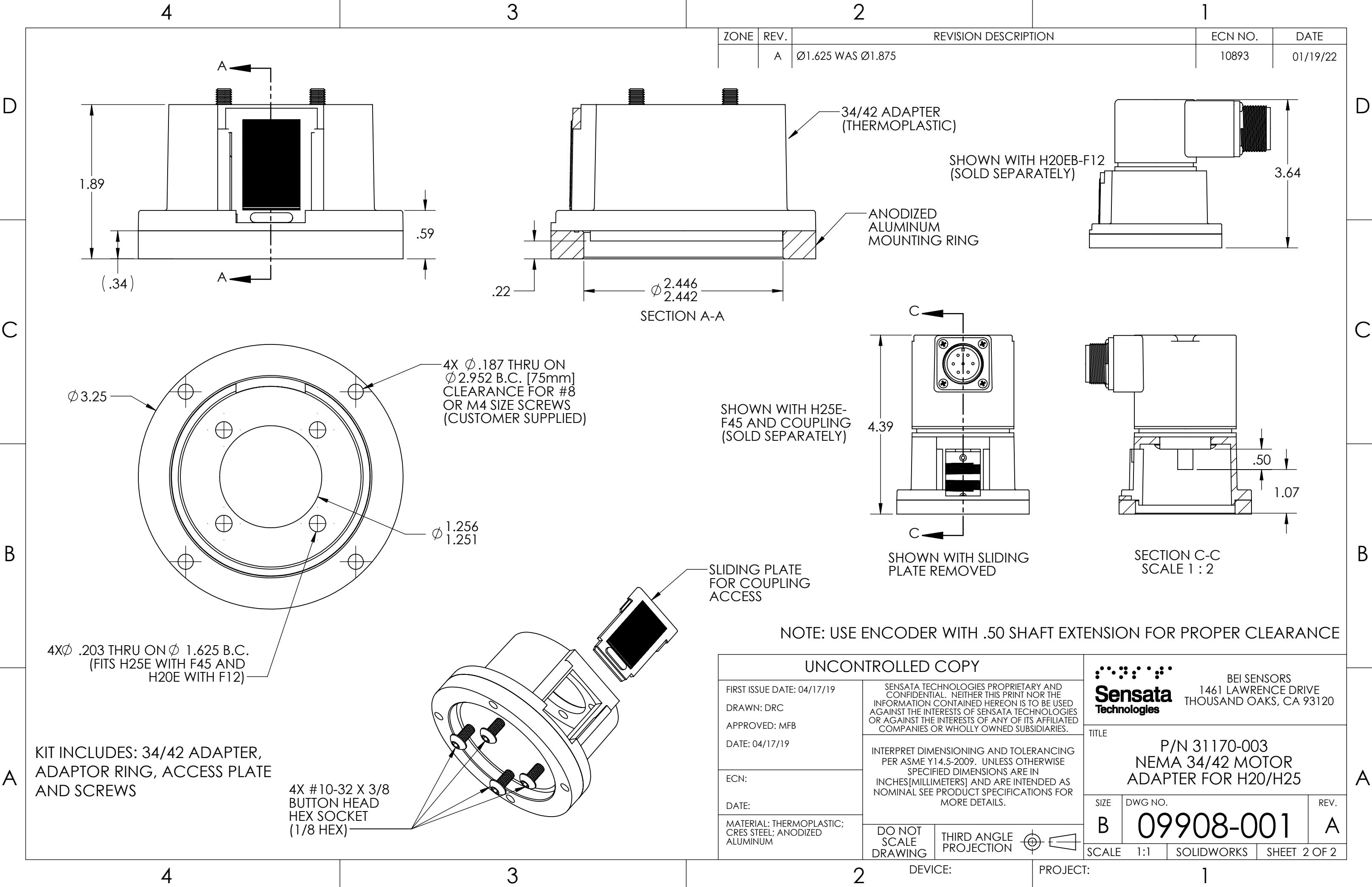
DEVICE: PROJECT:

4

3

2

1



Mouser Electronics

Authorized Distributor

Click to View Pricing, Inventory, Delivery & Lifecycle Information:

Sensata:

[31170-001](#) [31170-003](#)