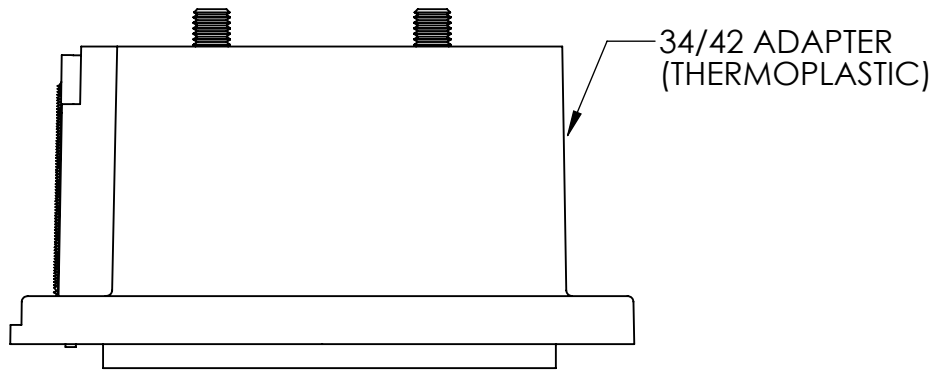
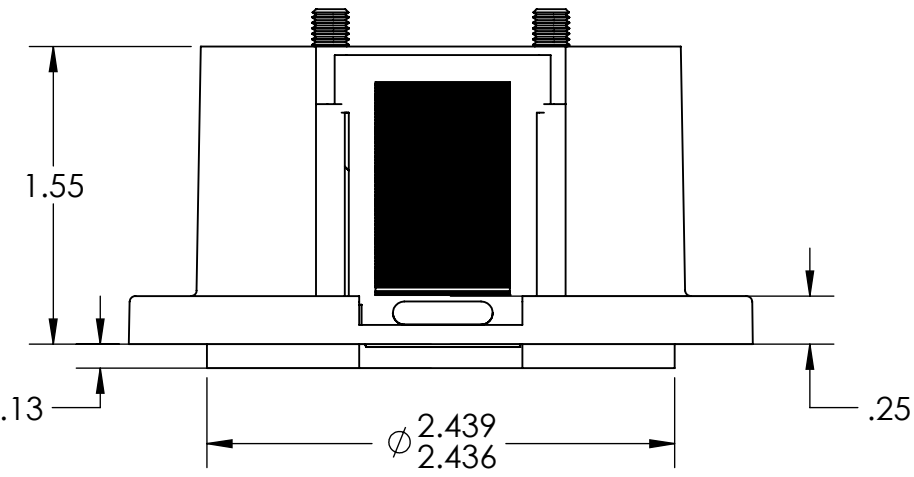
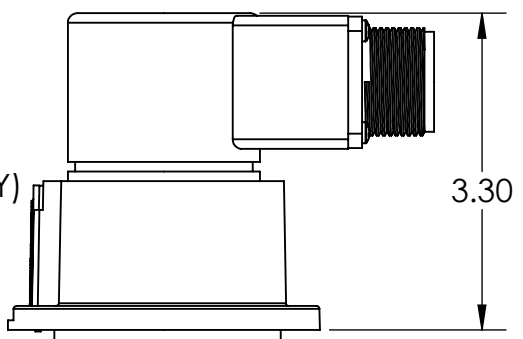


D

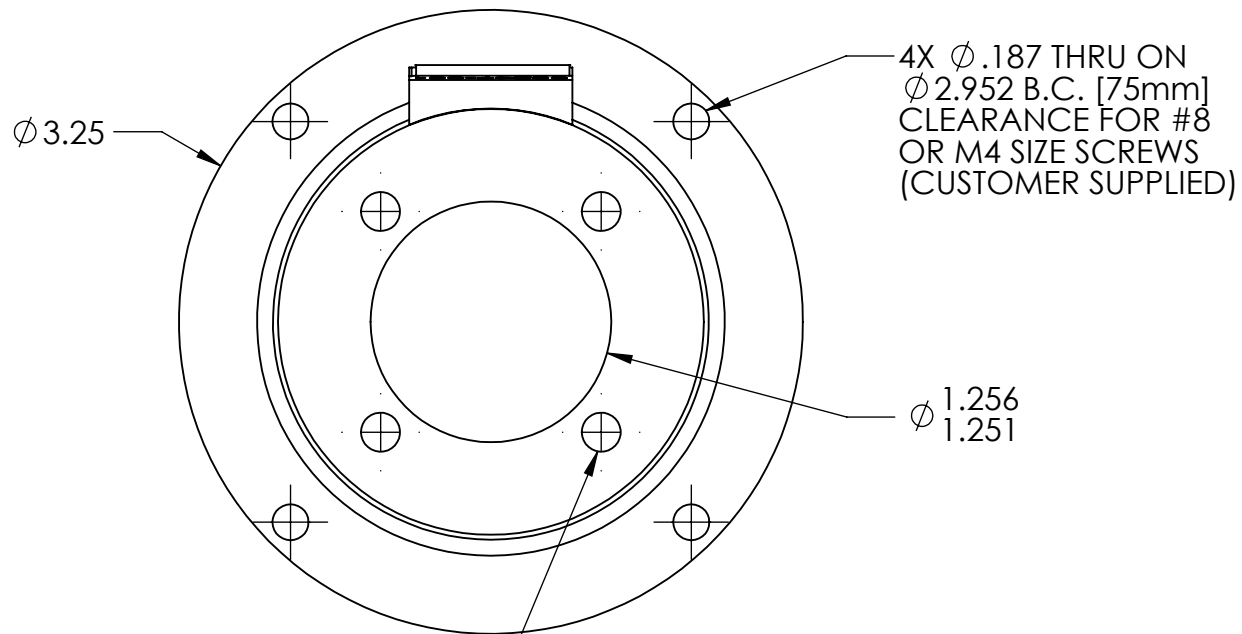


SHOWN WITH  
H20EB-F12  
(SOLD SEPARATELY)

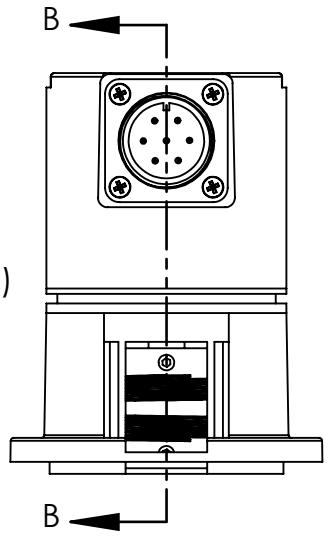


D

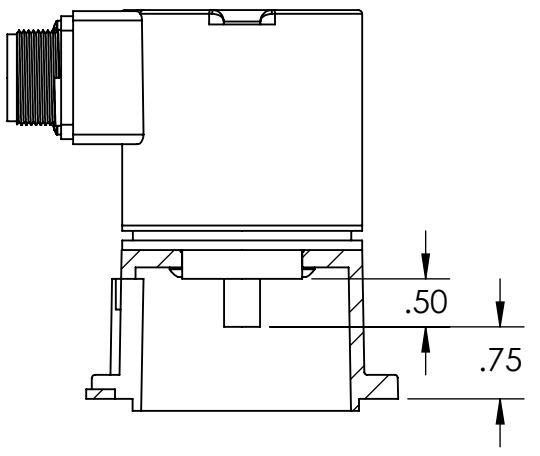
C



SHOWN WITH H25E-F45 AND  
COUPLING (SOLD SEPARATELY)



SHOWN WITH SLIDING  
PLATE REMOVED



SECTION B-B  
SCALE 1 : 2

C

B

4X  $\phi$ .203 THRU ON  $\phi$  1.875 B.C.  
(FITS H25E WITH F45 AND  
H20E WITH F12)

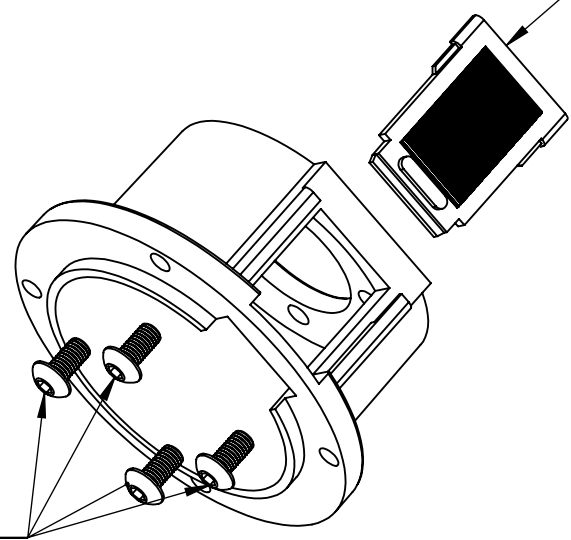
SLIDING PLATE  
FOR COUPLING  
ACCESS

NOTE: USE ENCODER WITH .50 SHAFT EXTENSION FOR PROPER CLEARANCE

A

KIT INCLUDES:  
34/42 ADAPTER, SCREWS  
AND ACCESS PLATE

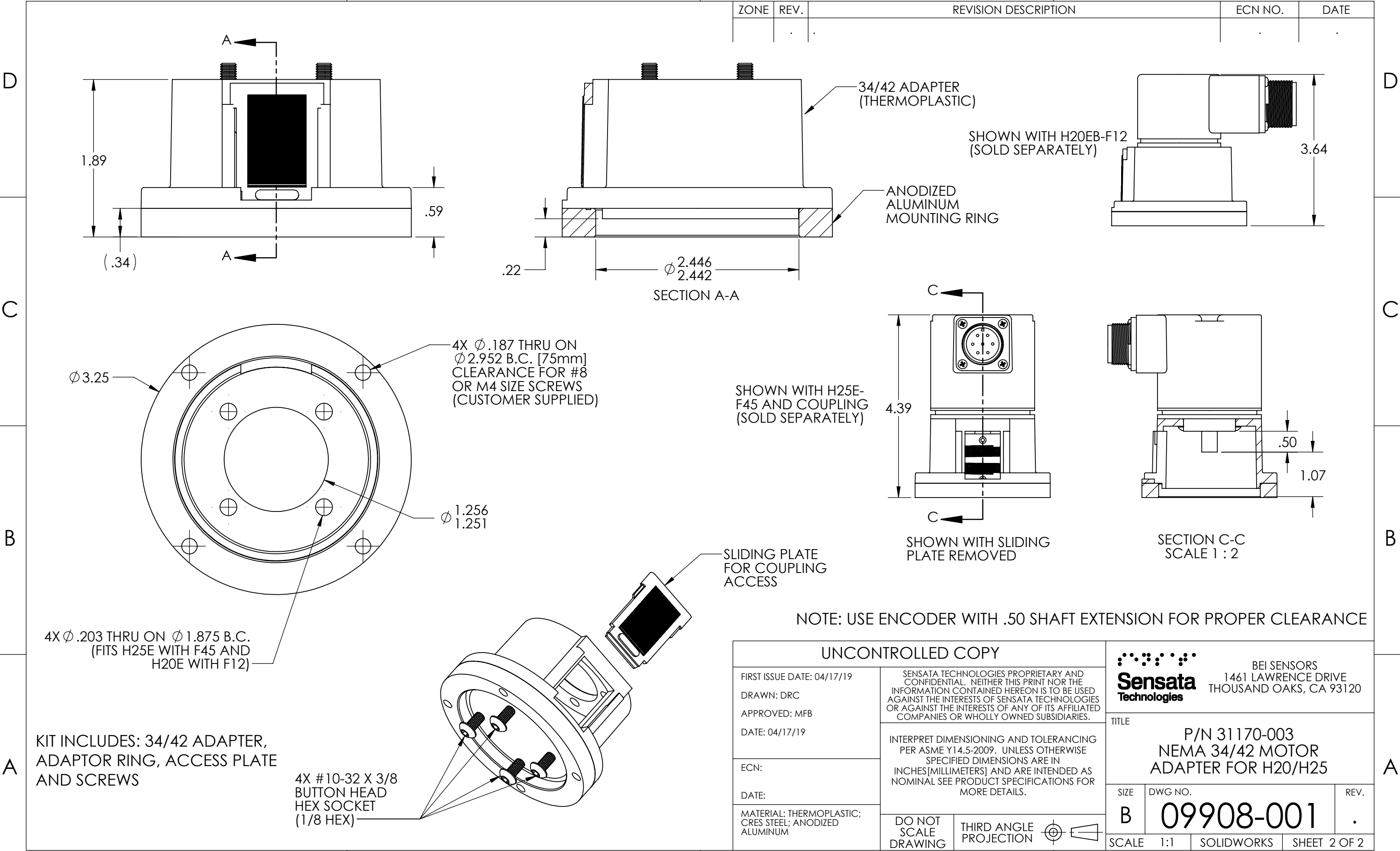
4X #10-32 X 3/8  
BUTTON HEAD  
SCREWS (1/8 HEX)



B

A

UNCONTROLLED COPY		BEI SENSORS 1461 LAWRENCE DRIVE THOUSAND OAKS, CA 93120	
FIRST ISSUE DATE: 04/17/19	SENSATA TECHNOLOGIES PROPRIETARY AND CONFIDENTIAL. NEITHER THIS PRINT NOR THE INFORMATION CONTAINED HEREON IS TO BE USED AGAINST THE INTERESTS OF SENSATA TECHNOLOGIES OR AGAINST THE INTERESTS OF ANY OF ITS AFFILIATED COMPANIES OR WHOLLY OWNED SUBSIDIARIES.	TITLE P/N 31170-001 NEMA 34/42 MOTOR ADAPTER KIT FOR H20/H25	
DRAWN: DRC		SIZE B	DWG NO. 09908-001
APPROVED: MFB	INTERPRET DIMENSIONING AND TOLERANCING PER ASME Y14.5-2009. UNLESS OTHERWISE SPECIFIED DIMENSIONS ARE IN INCHES[MILLIMETERS] AND ARE INTENDED AS NOMINAL SEE PRODUCT SPECIFICATIONS FOR MORE DETAILS.	REV.	.
DATE: 04/17/19		SCALE 1:1	SHEET 1 OF 2
ECN:	DO NOT SCALE DRAWING	THIRD ANGLE PROJECTION	
DATE:		PROJECT:	
MATERIAL: THERMOPLASTIC, CRES STEEL	DEVICE:		1



# Mouser Electronics

Authorized Distributor

Click to View Pricing, Inventory, Delivery & Lifecycle Information:

Sensata:

[31170-001](#) [31170-003](#)