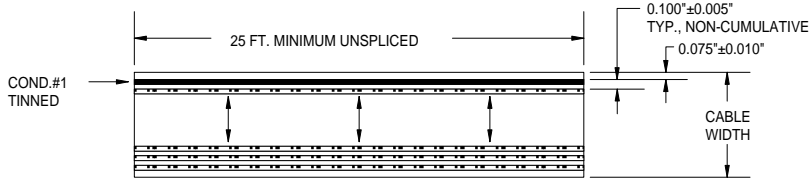


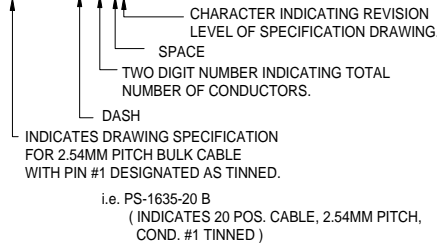
PROPRIETARY INFORMATION NOTICE

This document and the designs, specifications, and engineering information disclosed herein are the property of Parlex USA LLC, and are not to be disseminated or reproduced without expressed written consent. This document is loaned in confidence and then only for consideration of the matter disclosed herein. In accepting loan of this document, the recipient agrees to keep it and the matter disclosed herein in confidence and not to use or permit their use in any way detrimental to Parlex USA LLC.



Non RoHS Part Numbering System

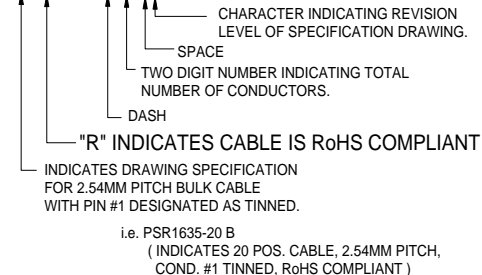
PS-1635-XX B



- 1) BULK CABLE SPECIFICATION FOR 2.54MM PITCH FLAT LAMINATED CABLE.
- 2) NUMBER OF CONDUCTORS AVAILABLE 1 THROUGH 99
- 3) CONDUCTOR NUMBER 1 IS DISTINGUISHED FROM REMAINING CONDUCTORS BY TIN PLATING. IT IS VISIBLE, AS SUCH, THROUGH POLYESTER INSULATION.
- 4) INSULATION: 0.002" THICK POLYESTER WITH FLAME RETARDANT ADHESIVE.
- 5) CONDUCTORS: 0.003" X 0.050" FLAT COPPER, POS. #1 IS TIN PLATED (27 AWG EQUIVALENT)
- 6) U.L. RATING: AWM STYLE 2643, 105°C, VW-1, 300V
- 7) CURRENT RATING: 3A MAXIMUM
- 8) DIELECTRIC STRENGTH: 2500V/MIL
- 9) WHEN ORDERING, USE PART NUMBERING SYSTEM DESCRIBED TO DETERMINE NUMBER OF CONDUCTORS REQUIRED
- 10) CABLE WIDTH=(NUMBER OF CONDUCTORS +1) X 0.100"

RoHS Part Numbering System

PSR1635-XX B



SPECIFICATION DRAWING FOR BULK CABLE, 2.54MM PITCH, COND. #1 TINNED, MATCHING STANDARD AMP REQUIREMENTS FOR .100" CENTERLINE FFC

SIZE B	FSCM 18377	PS-1635	Rev. B
SCALE NA	SHEET 1 OF 1		1

Mouser Electronics

Authorized Distributor

Click to View Pricing, Inventory, Delivery & Lifecycle Information:

Johnson Electric:

[PSR1635-20](#) [PSR1635-03](#) [PSR1635-08](#) [PSR1635-09](#) [PSR1635-10](#) [PSR1635-11](#) [PSR1635-12](#) [PSR1635-05](#)
[PSR1635-15](#) [PSR1635-02](#) [PSR1635-06](#) [PSR1635-13](#) [PSR1635-14](#) [PSR1635-16](#) [PSR1635-17](#) [PSR1635-18](#)
[PSR1635-04](#) [PSR1635-27](#) [PSR1635-35](#) [PSR1635-34](#) [PSR1635-24](#) [PSR1635-21](#) [PSR1635-22](#) [PSR1635-19](#)
[PSR1635-36](#) [PSR1635-23](#) [PSR1635-32](#) [PSR1635-30](#) [PSR1635-26](#) [PSR1635-33](#) [PSR1635-31](#) [PSR1635-25](#)
[PSR1635-07](#) [PSR1635-28](#) [PSR1635-29](#)