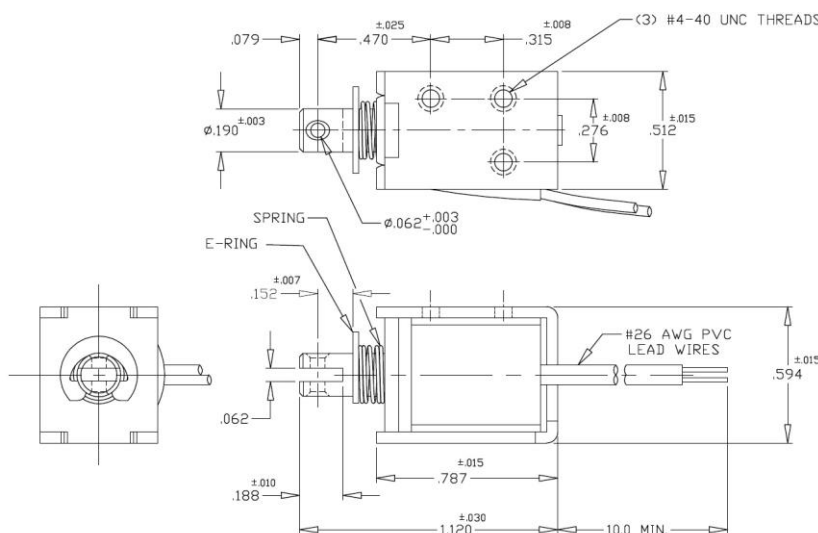
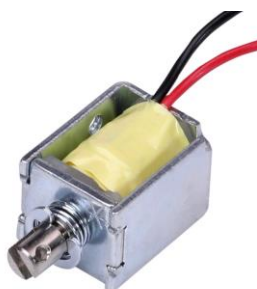


Model B17L

Latching DC Pull Box Frame Solenoid

Size: 0.79" L x 0.51" W x 0.59" H

ALL PRODUCTS ARE RoHS COMPLIANT



See website for coil connection and operation details
Solenoid shown latched with plunger fully seated

Part No.	Duty Cycle	Pull-in Voltage	Unlatch Voltage	Resistance (Ω) ± 5%	Max On Time	Power (W)	Current (A)
B17-L-158-B-4	Intermittent	6 VDC	3 VDC	5.40	36 Secs	6.4	1.11
B17-L-155-B-4	Intermittent	12 VDC	6 VDC	21.93	36 Secs	6.4	0.55
B17-L-156-B-4	Intermittent	18 VDC	9 VDC	50.20	36 Secs	6.4	0.36
B17-L-154-B-4	Intermittent	24 VDC	12 VDC	88.95	36 Secs	6.4	0.27
B17-L-153-B-4	Intermittent	48 VDC	24 VDC	337.00	36 Secs	6.4	0.14

Intermittent Duty = 25% "On" Time
When ordering please refer to Part No. as listed above
Please consult factory for custom configurations

Typical Pull Force (oz.)									Magnet Hold Force (oz.)
Stroke (in.)	0.010	0.020	0.030	0.040	0.050	0.060	0.080	0.100	
Intermittent Duty	20.9	13.5	8.7	5.5	4.0	3.0	2.25	1.8	10.0 w/spring

Additional Specifications:

Dielectric Strength:	500 VRMS
Recommended Heat Sink:	All force values shown are with no heat sink and 20°C ambient temperature
Return Spring Rate:	16.0 ozs/in; 2.40 ozs latched position
Coil Insulation:	Class "B" - 130°C max temperature
Total Unit Weight:	0.70 oz. / 19.85 g
Plunger Weight:	0.08 oz. / 2.46 g

Mouser Electronics

Authorized Distributor

Click to View Pricing, Inventory, Delivery & Lifecycle Information:

[Johnson Electric:](#)

[B17-L-158-B-3](#) [B17-L-155-B-3](#) [B17-L-154-B-3](#)