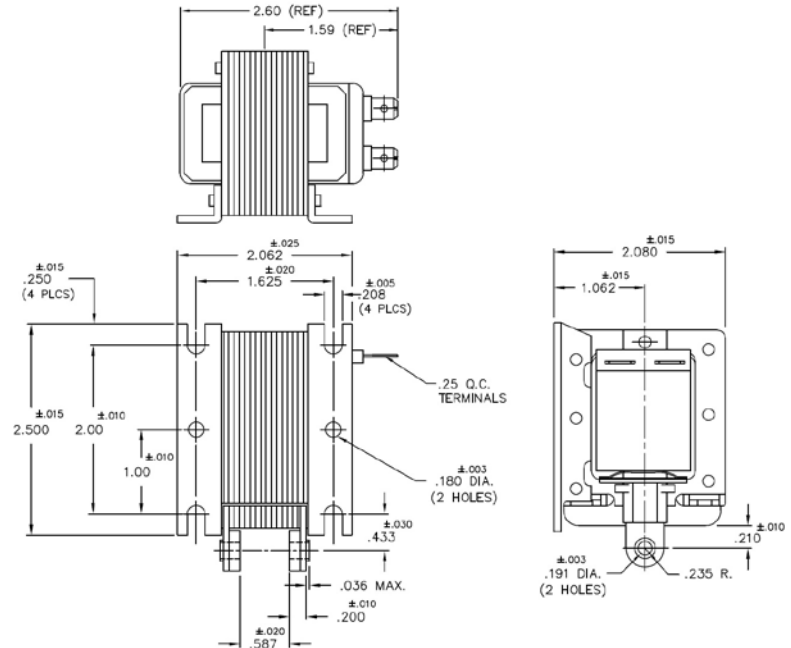
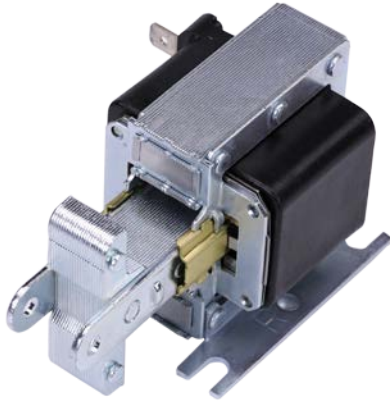


## AC Laminated Pull Solenoid

**Size: 2.500" L X 2.062" W X 2.060" H**

**ALL PRODUCTS ARE RoHS COMPLIANT**



Solenoid shown energized in drawing with plung

Part No.	Duty Cycle	Voltage	Resistance (Ω) ± 5%	Max On Time	Watts Seated (W)	Current Seated (A)
2536-F-34	Continuous	120 VAC / 60Hz	14.8	∞	19.0	0.48
2786-F-34	Intermittent	120 VAC / 60 Hz	11.7	3 mins	36.5	0.95
2537-F-34	Continuous	240 VAC / 60 Hz	60.0	∞	18.0	0.24
2787-F-34	Intermittent	240 VAC / 60 Hz	48.0	3 mins	36.0	0.48

Continuous Duty = 100% "On" Time

Intermittent Duty = 20% "On" Time

When ordering please refer to Part No. as listed above

Typical Pull Force (oz.)									Holding Force (oz.)
Stroke (in.)	0.060	0.125	0.250	0.375	0.500	0.625	0.750	1.000	
Continuous Duty	256	176	144	144	150	150	131	88	128
Intermittent Duty	512	256	192	192	192	192	184	125	N/A

### Additional Specifications:

Dielectric Strength:	1500 VRMS
Heat Sink:	None
Coil Insulation:	Class "F": 155°C Max Temperature
Coil Termination:	¼" Quick Connect Terminals
Total Unit Weight:	22 oz. / 623 g

# Mouser Electronics

Authorized Distributor

Click to View Pricing, Inventory, Delivery & Lifecycle Information:

[Johnson Electric:](#)

[2537-F-34](#) [2536-F-34](#)