

RG-Series

Single/Double Pole Lighted Rocker & Paddle Switches

[PRODUCT WEBPAGE](#)

request sample, configure part



The double pole version of the R-Series incorporates the same sleek lines as the original Corvette, in a double pole envelope. Features include silver-plated butt-action contacts which afford ratings to 20A/125, 15A 250VAC and withstand peak inrush currents up to 100 amps. Paddle or rocker actuators and a choice of solder lug, .250 Tab and wire lead terminations enable this switch to adapt to high current applications.

1-2

Poles

10-20

Amps

125-250

VAC

6-24

VDC

Typical Applications

- Power Supply
- Appliances
- Exercise Equipment
- Music Equipment

Tech Specs

Dielectric Strength

UL/CSA: 1000V - live to dead metal parts & opposite polarity
 VDE: 4000V - live to dead metal parts;
 1250V - opposite polarity & across open contacts

Electrical Life

50,000 cycles

Operating Temperature

-40°F to 185°F (-40°C to 85°C)

Ordering Scheme

Sample Part Number **RGSCA901 - R - B - B - A**

Selection 1 2 3 4 5

1. SERIES

15A 250 VAC, 20A 125 VAC, 3/4 HP 125-250 VAC, 14(6)A 250 VAC			
	Solder Lugs	.250 Tabs	Wire Leads
Standard Base			
OFF-NONE-ON (Single Pole)	RGSCA900	RGSCA901	RGSCA905
ON-NONE-ON (Single Pole)	RGSCB900	RGSCB901	RGSCB905
OFF-NONE-ON (Double Pole)	RGSCC900	RGSCC901	RGSCC905
ON-NONE-ON (Double Pole)	RGSCD900	RGSCD901	RGSCD905
European Base (22 x 30 mm cutout)			
OFF-NONE-ON (Single Pole)	RGSEA900	RGSEA901	RGSEA905
ON-NONE-ON (Single Pole)	RGSEB900	RGSEB901	RGSEB905
OFF-NONE-ON (Double Pole)	RGSEC900	RGSEC901	RGSEC905
ON-NONE-ON (Double Pole)	RGSED900	RGSED901	RGSED905

2. ACTUATOR STYLE

P Paddle	R Rocker
-----------------	-----------------

3. ACTUATOR COLOR

B Black	W White
----------------	----------------

4. BEZEL COLOR

B Black	W White
----------------	----------------

5. ROCKER LEGEND

NO LEGEND	hot stamp
OFF-ON vertical	O
OFF-ON horizontal	A
O-I horizontal	B
O-I vertical	D
Dual OFF-ON, O-I vertical	E
Dual OFF-ON, O-I horizontal	H
	J

Notes:

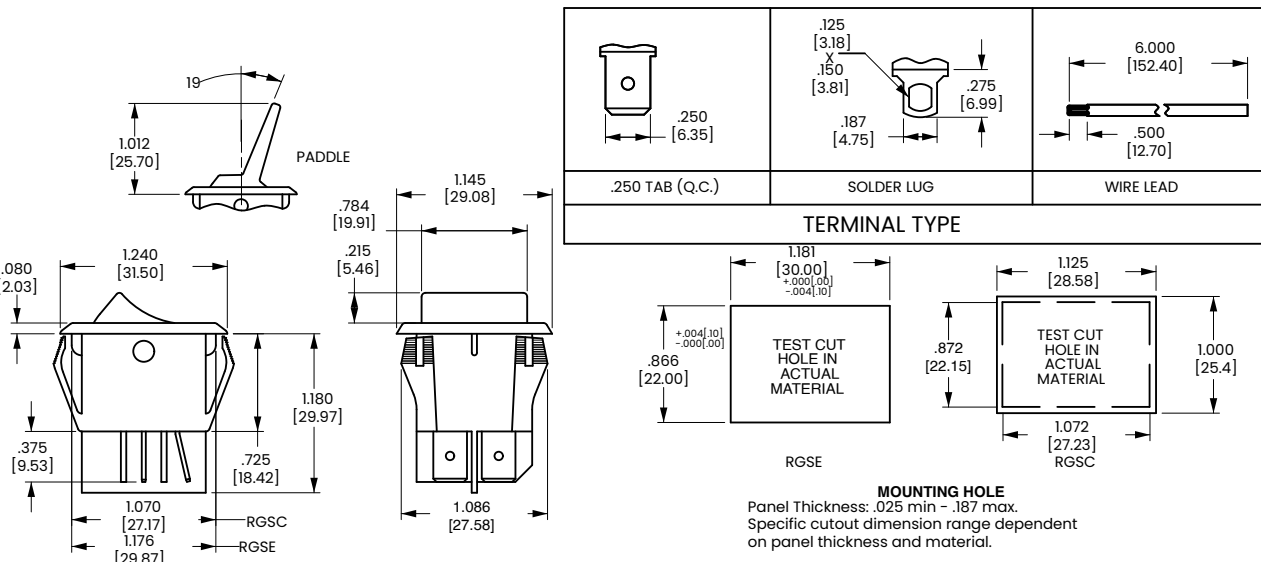
1 Additional ratings, colors and clear style actuators are available. Consult factory.

[Configure Complete Part Number >](#)

[Browse Standard Parts >](#)

Dimensional Specs

inches [millimeters]



Authorized Sales Representatives and Distributors

Click on a region of the map below to find your local representatives and distributors or visit www.carlingtech.com/findarep.



About Carling

Founded in 1920, Carling Technologies is a leading manufacturer of electrical and electronic switches and assemblies, circuit breakers, electronic controls, power distribution units, and multiplexed power distribution systems. With six ISO9001 and IATF16949 registered manufacturing facilities and technical sales offices worldwide, Carling Technologies Sales, Service and Engineering teams do much more than manufacture electrical components, they engineer powerful solutions! To learn more about Carling please visit www.carlingtech.com/company-profile.

To view all of Carling's environmental, quality, health & safety certifications please visit www.carlingtech.com/environmental-certifications.

© Carling Technologies, Inc.

3. Carling, Curvette are registered trademarks of Carling Technologies, Inc. in the U.S. and other countries.

Mouser Electronics

Authorized Distributor

Click to View Pricing, Inventory, Delivery & Lifecycle Information:

Carling Technologies:

[RGSCC901-R-B-B-E](#) [RGSCA901-R-B-B-E](#) [RGSCC201-R-B-B-0](#) [RGSCC201-R-B-B-E](#) [RGSCC211-R-B-B-0](#)
[RGSCC211-R-B-B-A](#) [RGSCC211-R-B-B-E](#) [RGSCC901-R-B-B-0](#) [RGSCA901-R-B-B-0](#) [RGSCC911-R-B-B-0](#)
[RGSCD901-R-B-B-0](#) [RGSEC901-R-B-B-0](#) [RGSCA211-R-B-B-0](#) [RGSCD201-R-B-B-0](#) [RGSED901-P-B-B-0](#)
[RGSCC201-R-B-B-A](#) [RGSCD211-R-B-B-0](#) [RGSCB901-R-B-B-0](#) [RGSCD911-R-B-B-0](#) [RGSCCE201-R-B-B-0](#)
[RGSCD201-R-B-B-E](#) [RGSCA201-R-B-B-0](#) [RGSED901-R-B-B-0](#) [RGSCF201-R-B-B-0](#) [RGSCD210-P-B-B-0](#)
[RGSCC905-R-B-B-0](#) [RGSCC900-R-B-B-0](#) [RGSEC901-P-B-B-0](#) [RGSCC200-R-B-B-0](#) [RGSCA900-R-B-B-E](#)
[RGSCC911-P-B-B-0](#) [RGSCA201-R-B-B-E](#) [RGSCC201-P-B-B-0](#) [RGSCA211-R-B-B-A](#) [RGSCC900-R-B-B-E](#)
[RGSCA201-R-B-B-A](#) [RGSCC571-R-B-B-0](#)