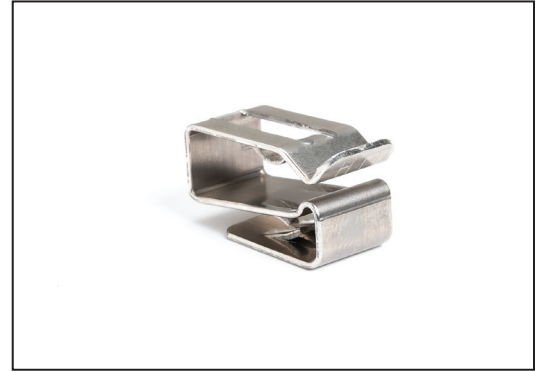


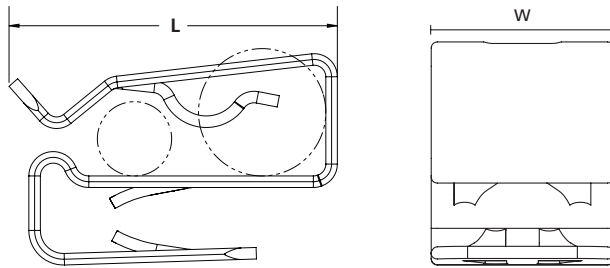
Solar Edge Clips

Features and Benefits

- Integrated design allows for easy insertion by hand
- Rounded edges protect the cable insulation from damage
- Double-compression design that accommodates up to two cables and various sizes (4-6 mm²)
- High extraction force for withstanding extreme conditions
- Made from SS304 stainless steel



Material	Stainless Steel (SS304)
Color	Metal (ML)
Operating Temperature	-112°F to +1000°F (-80°C to +538°C)



PART NO.	TYPE	Panel Thickness in. (mm)	Min. Cable Diameter in. (mm)	Max. Cable Diameter in. (mm)	Length (L) in. (mm)	Width (W) in. (mm)	Pkg. Qty.
151-03433	MSC2LP1.4	0.0 - 0.1 (1.2 - 1.7)	0.2 (4.1)	0.3 (7.0)	0.7 (17.9)	0.4 (9.5)	5000

Dimensions are approximate and subject to technical changes. Use Part No. for ordering and Type for specification purposes.

Contact HellermannTyton for more information.
Visit www.hellermann.tyton.com or call 800.537.1512

Disclaimer: The information in this datasheet is for informational purposes only. Information is subject to change at any time without notice.

Mouser Electronics

Authorized Distributor

Click to View Pricing, Inventory, Delivery & Lifecycle Information:

[HellermannTyton:](#)

[151-03433](#)