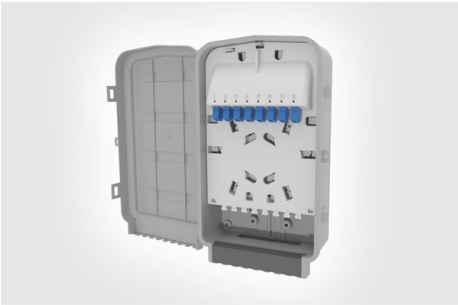


Specification Sheet

Part Number: MDU-S1-1LSA



UV stable enclosure with IP55 (NEMA 4) sealing rating for long-term outdoor performance.

Detachable lid prevents access and can also be snapped back to allow unrestricted access inside.

Separation of inbound fiber from connectorized drop cables keeps fragile areas protected.

Pole or building/façade mounted to provide connections where they are needed.

S1 Enclosure, 10–15 mm, LC-PC Simplex, With Adapters Installed, Gray, 1/pkg

Article Number	904-01314
Type	MDU-S1-1LSA-PC-GY
Color	Gray (GY)
Quantity Per	EA

<b>Product Description</b>	<p>The S1 enclosure is designed for wall-mounted distribution, featuring separate areas for inbound cable, fiber splice management and drop cable (customer connection) management. The inbound cable management area has a dedicated cable entry port, supporting both cable end and mid-span applications with loop storage capacity for up to 1.5 m of excess fiber. The tray features a crossover facility allowing for alternative routing direction and a fiber storage capacity of 1.5 m of 250µm fiber and 1.0 m of 900µm fiber. Inside drop cable management area can accommodate a PLC splitter (60 mm x 7 mm x 4 mm). Adapters are angled and spaced to allow for inspection prior to connection. Eight anchor guides are provided for securing the drop cables (maximum diameter 6.0 mm).</p> <ul style="list-style-type: none"> <li>•Door and splice tray cover have feature to allow locking</li> <li>•2 inbound/pass-thru and 8 drop cables</li> <li>•8x SC or LC adapters for connection to industry standard pre-terminated drop cables</li> <li>•24-fiber splice capacity (double stacked)</li> <li>•Separation of inbound fiber from splicing and connectorized drop cables</li> </ul>
<b>Short Description</b>	S1 Enclosure, 10–15 mm, LC-PC Simplex, With Adapters Installed, Gray, 1/pkg
<b>Global Part Name</b>	MDU-S1-1LSA-PC-GY-PC-GY
<b>Contents of pkg/kit</b>	S1 Enclosure Inbound/Outbound Cable Seals Fibre Splice Management Tray 8 LC PC Simplex Adaptors Drop Cable Management Plate Wall Mounting Kit
<b>Port Count</b>	8
<b>Variant</b>	Indoor/Outdoor Enclosure
<b>Width W (Imperial)</b>	6.1
<b>Width W (Metric)</b>	154
<b>Height H (Imperial)</b>	9.5

<b>Depth D (Imperial)</b>	2.84
<b>Depth D (Metric)</b>	72
<b>Material</b>	Polycarbonate (PC)
<b>Material Shortcut</b>	PC
<b>Package Quantity (Imperial)</b>	1
<b>Package Quantity (Metric)</b>	1
<b>Customs Number</b>	8544493080
<b>Weight (Metric)</b>	0.586
<b>Weight (Imperial)</b>	1.29

# Mouser Electronics

Authorized Distributor

Click to View Pricing, Inventory, Delivery & Lifecycle Information:

[HellermannTyton:](#)

[MDU-S1-1LSA](#)