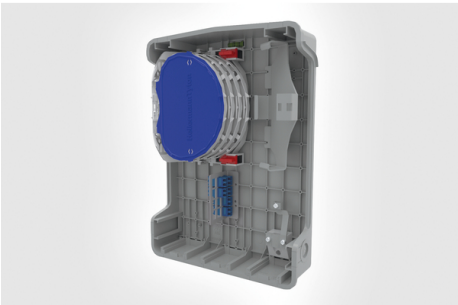


Specification Sheet

Part Number: MDUS3-B1LDP



UV stable enclosure with IP54 (NEMA 3S) sealing rating for long-term outdoor performance.

Multiple input/output points to run to multiple locations from one box.

Supports cabled, blown, pushed and pulled fiber deployments to accommodate any construction style.

S3 Splice & Patch Encl, 48-Fiber Splice, 12 LC/APC Adapters and Pigtails, Wall Mnt, Gray, 1/pkg

Article Number	857-01486
Type	MDU-S3-BWX-CP06LA1
Color	Gray RAL 7035 (7035)
Quantity Per	EA

**Product Description**

The S3 enclosure is designed for wall-mounted distribution, configured with the HellermannTyton 250µm IR Management System and patching bay. The management system accommodates four splice trays giving a maximum of 48 heat shrink splices and 3 PLC splitters. The position of the fiber management system allows for easy access for the routing of fiber to the trays. Fiber slot retaining blocks guide the fiber elements on to the IR system; the foam pad on the retainer is partially cut through to accommodate a range of fiber counts. An LC Duplex adapter connection plate is fitted with six LC duplex adapters and pigtails to provide 12 customer connection points. The LC pigtails are routed on to the fiber management trays to be spliced to the incoming fiber. Designed with seven input/output ports; three across the bottom, two on top and one on each side; each port will accommodate a 20 mm cable gland.

**Short Description**

S3 Splice & Patch Encl, 48-Fiber Splice, 12 LC/APC Adapters and Pigtails, Wall Mnt, Gray, 1/pkg

**Global Part Name**

MDU-S3-BWX-CP06LA1

**Technical Description**

The S3 enclosure is configured with the HellermannTyton 250µm IR Management System. The management system accommodates 4 SE-IR trays giving a maximum of 48 3A fibre splices and 3 PLC splitters. The position of the fibre management system allows for easy access for the routing of fibre on to the trays. The trays and fibre optic routing modules are white which makes it easy to see the colour of the fibre elements as they are routed through the positive fibre management system. Fibre slot retaining blocks guide the fibre elements on to the IR system; the foam pad on the retainer is partially cut through to accommodate a range of fibre counts. All IR system cover plates are coloured blue identifying them as removable parts allowing access to the fibre, the fibre retaining block and tray retaining clips are coloured red to aid in identification if they are dropped. An LC Duplex adaptor connection plate is fitted with 6 LC PC duplex adaptors and 12 pigtails to provide 12 customer connection points. The LC PC pigtails are routed on to the fibre management trays to be spliced to the incoming fibre. A loop storage basket is fitted for management of fibre loops and is located on left hand side of the enclosure. The enclosure is 340 x 247 x 76mm (H x W x D) and manufactured in light grey (RAL 7035), UV stable ABS (Acrylonitrile Butadiene Styrene) and has an IP54, IK08 and V0 rating. Designed with 7 input/output ports, 3 across the bottom, 2 on the top and 1 on each side, each port will accommodate a 20mm cable gland. A 100 x 25mm inset position on the front cover allows for a customer logo to be moulded in to the enclosure.

<b>Contents of pkg/kit</b>	S3 Enclosure 250µm IR Fiber Management System 4 SE-IR Trays with 3A Splice Bridges Adaptor Plate 6 LC APC Duplex Adaptors 12 LC APC Pigtails 3 x Entry/Exit Port Blanks Loop Storage Basket Cable Anchor In-built spirit level Fibre Picker Wall Mounting Kit Red and Green Polyspiral Tubing(2M)
<b>Port Count</b>	7
<b>Variant</b>	Indoor/Outdoor FTTx Enclosures
<b>Width W (Imperial)</b>	9.72
<b>Width W (Metric)</b>	247
<b>Height H (Imperial)</b>	13.39
<b>Height H (Metric)</b>	340
<b>Depth D (Imperial)</b>	2.99
<b>Depth D (Metric)</b>	76
<b>Material</b>	Acrylonitrile Butadiene Styrene (ABS)
<b>Material Shortcut</b>	ABS
<b>Package Quantity (Imperial)</b>	1

<b>Package Quantity (Metric)</b>	1
<b>Customs Number</b>	9030400000

# Mouser Electronics

Authorized Distributor

Click to View Pricing, Inventory, Delivery & Lifecycle Information:

[HellermannTyton:](#)

[MDUS3-B1LDP](#)