

Specification Sheet

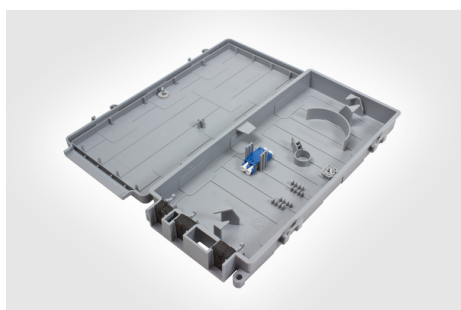
Part Number: CCE-1111LX-G

UV stable enclosure with IP54 (NEMA 3S) sealing rating for long-term outdoor performance.

Internal positive fiber management and fiber retention clips maintain a minimum 30 mm bend radius throughout, ensuring reliable data throughput.

Hinged lid allows quick and clear access to internal fiber for splicing and termination.

CCE is same width as a brick blow-out cover to mask any bricks damaged by drilling.



Customer Connection Enclosure, 1x LC Duplex SM, Gray, 1/pkg

Article Number	857-01444
Type	CCE-A11121LX1/GY
Color	Gray (GY)
Quantity Per	EA

Product Description	<p>The Customer Connection Enclosure (CCE) is designed as a Building Entry Point (BEP) to provide a fiber termination and network demarcation point in a Fiber to the Home (FTTH) network. A loop-through facility allows single fiber elements to be removed and spliced while remaining fiber can be fed on to the next connection point. A single port in the rear allows fiber to be passed through the wall into the customer premises. Supplied cable ties secure all incoming/outgoing cables and blown fiber ducts and provide strain relief where necessary. The CCE can be supplied pre-loaded with fiber adapters and pigtails as required. •2x SC Simplex/LC Duplex customer connections •4x heat shrink splices •6x incoming/outgoing ports and through-the-wall port •Suitable for cables or ducts up to a maximum diameter of 7 mm •Store up to a maximum of 50 m of 1.1 mm cable</p>
Short Description	Customer Connection Enclosure, 1x LC Duplex SM, Gray, 1/pkg
Global Part Name	CCE-A11121LX1/GY
Technical Description	<p>The Customer Connection Enclosure (CCE) supports a maximum 2 x SC Simplex or LC Duplex adaptors. The closure is manufactured from UV stable ABS with a hinged lid which locks in the open position to allow for quick and clear access to the internal fibre. The closure has 6 entry/exit ports at the bottom of the closure which are suitable for cables and ducts up to a maximum diameter of 8.5mm. A loop through facility allows for single fibre elements to be removed and spliced whilst the remaining fibres can be fed on to the next connection point. A single port in the rear of the closure allows for fibre to be passed through the wall into the customer premises. Mechanical fixing is provided to secure all incoming/outgoing cables/blown fibre ducts and to provide strain relief where necessary. Internal positive fibre management and fibre retention clips maintain a minimum 30mm bend radius throughout for up to a maximum of 50m of 1.1mm diameter cable.</p>
Contents of pkg/kit	CCE Enclosure, Gray Foam Sealing grommets 3x Wall mounting screw and anchor 3x Red cable tie Phillips screw lock 1x LC Duplex SM Adapter
Variant	Outdoor FTTx Enclosures

Width W (Imperial)	5.12
---------------------------	------

Width W (Metric)	130
-------------------------	-----

Height H (Imperial)	10.35
----------------------------	-------

Height H (Metric)	263
--------------------------	-----

Depth D (Imperial)	1.46
---------------------------	------

Depth D (Metric)	37
-------------------------	----

Material	Acrylonitrile Butadiene Styrene, UV-stabilized (ABSUV)
-----------------	--

Material Shortcut	ABSUV
--------------------------	-------

Package Quantity (Imperial)	20
------------------------------------	----

Package Quantity (Metric)	20
----------------------------------	----

Mouser Electronics

Authorized Distributor

Click to View Pricing, Inventory, Delivery & Lifecycle Information:

[HellermannTyton:](#)

[CCE-1111LX-G](#)