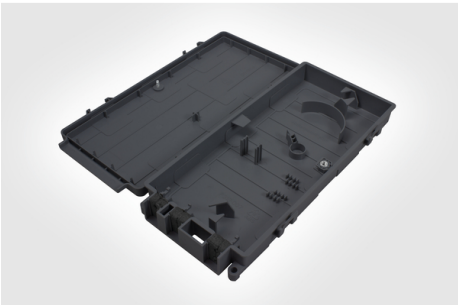


Specification Sheet

Part Number: CCE-111XXX-B



Black, UV stable enclosure with IP54 (NEMA 3S) sealing rating for long-term outdoor performance.

Internal positive fiber management and fiber retention clips maintain a minimum 30 mm bend radius throughout, ensuring reliable data throughput.

Hinged lid allows quick and clear access to internal fiber for splicing and termination.

CCE is same width as a brick blow-out cover to mask any bricks damaged by drilling.

Customer Connection Enclosure, No Adapters, Screw Lock, Black, 1/pkg

Article Number	857-01434
Type	CCE-A1112XXX1/BK
Color	Black (BK)
Quantity Per	EA

Product Description

The Customer Connection Enclosure (CCE) is a Building Entry Point (BEP), providing a fiber termination and network demarcation point external to the connected premise in a Fiber to the Home (FTTH) network. In addition to providing an external test point, the enclosure stores up to 50 m of 1.1 mm cable. A loop-through facility allows for single fiber elements to be removed and spliced while the remaining fiber can be fed on to the next connection point. A single port in the rear of the closure allows fiber to be passed through the wall into the customer premises. Supplied cable ties secure all incoming/outgoing cables/blown fiber ducts and provide strain relief where necessary. The CCE can be supplied pre-loaded with fiber adapters and pigtails as required. •2x SC Simplex/LC Duplex customer connections for redundancy or multiple connections. •4x heat shrink splices accommodate connections to the adapters or drop cables. •6 incoming/outgoing ports and through-the-wall port to support multiple incoming and drop cables up to 7 mm in diameter. •Can store up to a maximum of 50 m of 1.1 mm cable.

Short Description

Customer Connection Enclosure, No Adapters, Screw Lock, Black, 1/pkg

Global Part Name

CCE-A1112XXX1/BK

Technical Description

The Customer Connection Enclosure (CCE) supports a maximum 2 x SC Simplex or LC Duplex adaptors. The closure is manufactured from UV stable ABS with a hinged lid which locks in the open position to allow for quick and clear access to the internal fibre. The closure has 6 entry/exit ports at the bottom of the closure which are suitable for cables and ducts up to a maximum diameter of 8.5mm. A loop through facility allows for single fibre elements to be removed and spliced whilst the remaining fibres can be fed on to the next connection point. A single port in the rear of the closure allows for fibre to be passed through the wall into the customer premises. Mechanical fixing is provided to secure all incoming/outgoing cables/blown fibre ducts and to provide strain relief where necessary. Internal positive fibre management and fibre retention clips maintain a minimum 30mm bend radius throughout for up to a maximum of 50m of 1.1mm diameter cable.

Contents of pkg/kit

CCE Enclosure, Black Foam Sealing grommets 3x Wall mounting screw and anchor 3x Red cable tie Phillips screw lock

Variant	Outdoor FTTx Enclosures
Width W (Imperial)	5.12
Width W (Metric)	130
Height H (Imperial)	10.35
Height H (Metric)	263
Depth D (Imperial)	1.46
Depth D (Metric)	37
Material	Acrylonitrile Butadiene Styrene, UV-stabilized (ABSUV)
Material Shortcut	ABSUV
Package Quantity (Imperial)	1
Package Quantity (Metric)	1
Customs Number	9030400000

Mouser Electronics

Authorized Distributor

Click to View Pricing, Inventory, Delivery & Lifecycle Information:

[HellermannTyton:](#)

[CCE-111XXX-B](#)