

# Attenuators

## SMA Miniature Type

### DC - 18 GHz High Performance

- DC-2, DC-4, DC-8, and DC-12.4 units available
- 0 - 60 dB Attenuation Values
- Rugged Stainless Steel Construction
- Any Male/Female combination available
- Low cost alternatives available

Midwest Microwave's SMA miniature series of fixed coaxial attenuators provide temperature stable, ruggedly built, precision performance in a small light weight package size. Attenuation values up through 60 dB in 1 dB increments are available with any of the units described and with any combination of female or male SMA connectors.



### SPECIFICATIONS - HIGH PERFORMANCE

**Frequency:** DC - 18.0, DC - 12.4, DC - 8.0 GHz  
DC - 4.0, DC - 2.0 GHz

**Attenuation Accuracy:** 1-10 dB  $\pm 0.3$  dB  
11-20 dB  $\pm 0.5$  dB  
21-40 dB  $\pm 1.0$  dB  
41-60 dB  $\pm 1.5$  dB

**VSWR:** 1.07+.015 (f GHz) max.

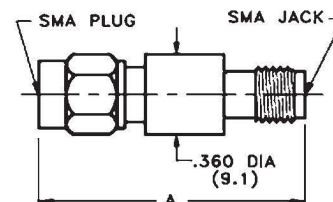
**Power:** 2 Watts Average @ 25C derated linearly to .5 Watts @ 125C

**Peak Power:** 200 Watts

**Operating Temperature Range:** - 65 to + 125C

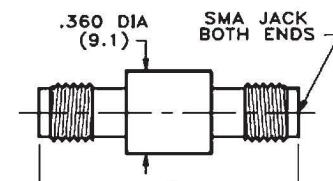
**Finish:** Passivated Stainless Steel

| DC - 18 GHz  | 263 Series         | Model Numbers      |
|--|--------------------|--------------------|
| Male/Female  | Female/Female      | Male/Male          |
| ATT-0263-XX-SMA-02   | ATT-263F-XX-SMA-02 | ATT-263M-XX-SMA-02 |
| XX = Attenuation Value: Select 01-60dB in 1dB increments<br>(.5 dB increments available) |                    |                    |
| <b>HIGH PERFORMANCE</b>  |                    |                    |



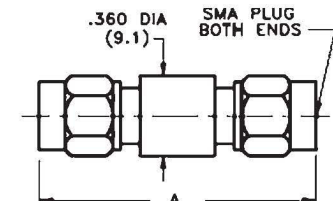
| Attenuation Value | Length A |
|-------------------|----------|
| 1-20 dB           | 1.20     |
| 21-60 dB          | 1.49     |

| DC - 12.4 GHz  | 205 Series         | Model Numbers      |
|--|--------------------|--------------------|
| Male/Female  | Female/Female      | Male/Male          |
| ATT-0205-XX-SMA-02   | ATT-205F-XX-SMA-02 | ATT-205M-XX-SMA-02 |
| XX = Attenuation Value: Select 01-60dB in 1dB increments<br>(.5 dB increments available) |                    |                    |
| <b>HIGH PERFORMANCE</b>  |                    |                    |



| Attenuation Value | Length A |
|-------------------|----------|
| 1-20 dB           | 1.07     |
| 21-60 dB          | 1.36     |

| DC - 8.0 GHz   | 206 Series         | Model Numbers      |
|--|--------------------|--------------------|
| Male/Female  | Female/Female      | Male/Male          |
| ATT-0206-XX-SMA-02   | ATT-206F-XX-SMA-02 | ATT-206M-XX-SMA-02 |
| XX = Attenuation Value: Select 01-60dB in 1dB increments<br>(.5 dB increments available) |                    |                    |
| <b>HIGH PERFORMANCE</b>  |                    |                    |



| Attenuation Value | Length A |
|-------------------|----------|
| 1-20 dB           | 1.33     |
| 21-60 dB          | 1.62     |

# Mouser Electronics

Authorized Distributor

Click to View Pricing, Inventory, Delivery & Lifecycle Information:

[Cinch Connectivity Solutions:](#)

[ATT-0263-17-SMA-02](#)