

# Attenuators

## SMA Miniature Type

### DC - 18 GHz High Performance

- DC-2, DC-4, DC-8, and DC-12.4 units available
- 0 - 60 dB Attenuation Values
- Rugged Stainless Steel Construction
- Any Male/Female combination available
- Low cost alternatives available

Midwest Microwave's SMA miniature series of fixed coaxial attenuators provide temperature stable, ruggedly built, precision performance in a small light weight package size. Attenuation values up through 60 dB in 1 dB increments are available with any of the units described and with any combination of female or male SMA connectors.

#### SPECIFICATIONS - HIGH PERFORMANCE

**Frequency:** DC - 18.0, DC - 12.4, DC - 8.0 GHz  
DC - 4.0, DC - 2.0 GHz

**Attenuation Accuracy:** 1-10 dB  $\pm 0.3$  dB  
11-20 dB  $\pm 0.5$  dB  
21-40 dB  $\pm 1.0$  dB  
41-60 dB  $\pm 1.5$  dB

**VSWR:** 1.07+.015 (f GHz) max.

**Power:** 2 Watts Average @ 25C derated linearly to .5 Watts @ 125C

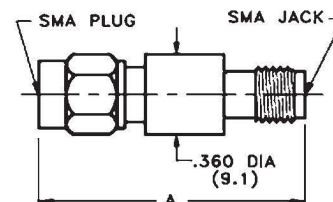
**Peak Power:** 200 Watts

**Operating Temperature Range:** - 65 to + 125C

**Finish:** Passivated Stainless Steel

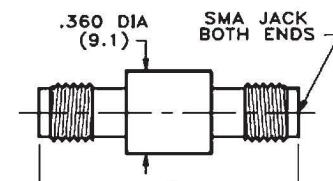


DC - 18 GHz	263 Series	Model Numbers
Male/Female	Female/Female	Male/Male
ATT-0263-XX-SMA-02	ATT-263F-XX-SMA-02	ATT-263M-XX-SMA-02
XX = Attenuation Value: Select 01-60dB in 1dB increments (.5 dB increments available)		
<b>HIGH PERFORMANCE</b>		



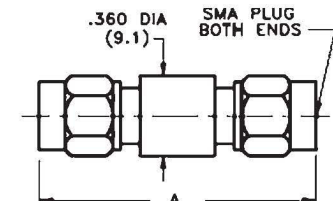
Attenuation Value	Length A
1-20 dB	1.20
21-60 dB	1.49

DC - 12.4 GHz	205 Series	Model Numbers
Male/Female	Female/Female	Male/Male
ATT-0205-XX-SMA-02	ATT-205F-XX-SMA-02	ATT-205M-XX-SMA-02
XX = Attenuation Value: Select 01-60dB in 1dB increments (.5 dB increments available)		
<b>HIGH PERFORMANCE</b>		



Attenuation Value	Length A
1-20 dB	1.07
21-60 dB	1.36

DC - 8.0 GHz	206 Series	Model Numbers
Male/Female	Female/Female	Male/Male
ATT-0206-XX-SMA-02	ATT-206F-XX-SMA-02	ATT-206M-XX-SMA-02
XX = Attenuation Value: Select 01-60dB in 1dB increments (.5 dB increments available)		
<b>HIGH PERFORMANCE</b>		



Attenuation Value	Length A
1-20 dB	1.33
21-60 dB	1.62

# Mouser Electronics

Authorized Distributor

Click to View Pricing, Inventory, Delivery & Lifecycle Information:

[Cinch Connectivity Solutions:](#)

[ATT-0263-07-SMA-02](#)