

SC Male Plug to SC Female Jack

Model Number

ADT-2832-MF-SCO-02

SPECIFICATIONS

Frequency: DC - 11.0 GHz

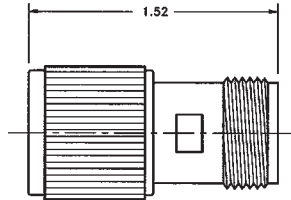
VSWR: 1.08 @ DC - 4.0 GHz

1.10 @ 4.0 - 8.0 GHz

1.15 @ 8.0 - 11.0

Impedance: 50 Ohms

Finish: Passivated Stainless Steel



SC Female Jack to SC Female Jack

Model Number

ADT-2833-FF-SCO-02

SPECIFICATIONS

Frequency: DC - 11.0 GHz

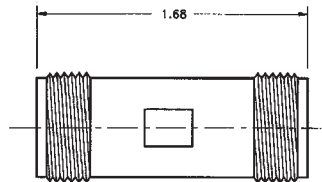
VSWR: 1.08 @ DC - 4.0 GHz

1.10 @ 4.0 - 8.0 GHz

1.15 @ 8.0 - 11.0 GHz

Impedance: 50 Ohms

Finish: Passivated Stainless Steel



SC Male Plug to SC Male Plug

Model Number

ADT-2834-MM-SCO-02

SPECIFICATIONS

Frequency: DC - 11.0 GHz

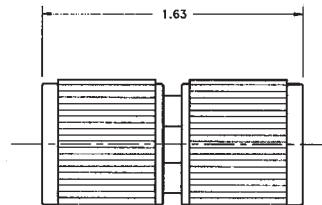
VSWR: 1.08 @ DC - 4.0 GHz

1.10 @ 4.0 - 8.0 GHz

1.15 @ 8.0 - 11.0 GHz

Impedance: 50 Ohms

Finish: Passivated Stainless Steel



SC Female Jack to SC Female Jack - Flange Mount

Model Number

ADT-2835-FF-SCO-02

SPECIFICATIONS

Frequency: DC - 11.0 GHz

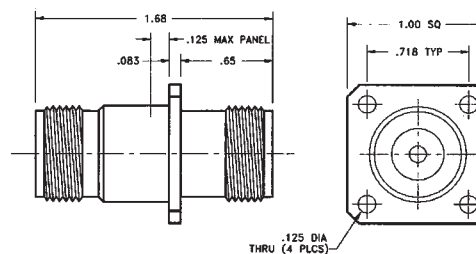
VSWR: 1.08 @ DC - 4.0 GHz

1.10 @ 4.0 - 8.0 GHz

1.15 @ 8.0 - 11.0 GHz

Impedance: 50 Ohms

Finish: Passivated Stainless Steel



Note: Also available in bulkhead mount as ADT-2836-FF-SCO-02

Mouser Electronics

Authorized Distributor

Click to View Pricing, Inventory, Delivery & Lifecycle Information:

[Cinch Connectivity Solutions:](#)

[ADT-2833-FF-SC0-02](#)