

SMA Male Plug to BMA Female Jack

Model Number

ADT-2768-SM-BMF-02

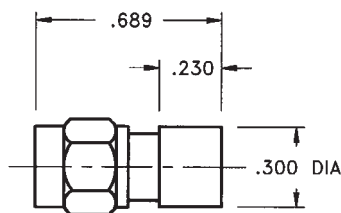
SPECIFICATIONS

Frequency: DC - 18.0 GHz

VSWR: $1.05 + .005 f$ (GHz)

Impedance: 50 Ohms

Finish: Passivated Stainless Steel



SMA Bulkhead Female Jack to BMA Female Jack

Model Number

ADT-2805-SF-BMF-02

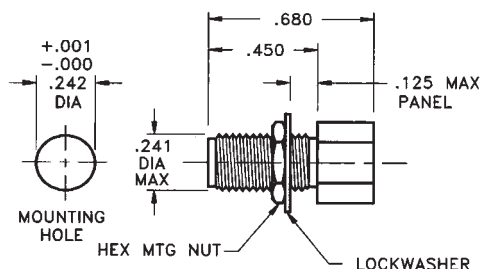
SPECIFICATIONS

Frequency: DC - 18.0 GHz

VSWR: $1.05 + .005 f$ (GHz)

Impedance: 50 Ohms

Finish: Passivated Stainless Steel



SMA Female Jack to BMA Female Jack - Bulkhead Mount

Model Number

ADT-2806-SF-BMF-02

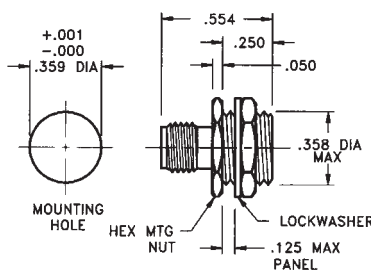
SPECIFICATIONS

Frequency: DC - 18.0 GHz

VSWR: $1.05 + .005 f$ (GHz)

Impedance: 50 Ohms

Finish: Passivated Stainless Steel



SMA Male Plug to BMA Female Jack - Bulkhead Mount

Model Number

ADT-2807-SM-BMF-02

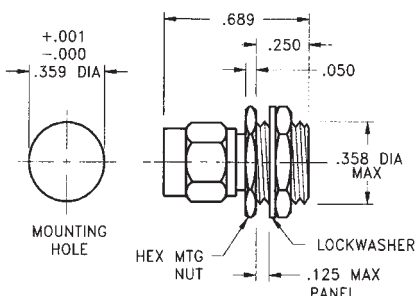
SPECIFICATIONS

Frequency: DC - 18.0 GHz

VSWR: $1.05 + .005 f$ (GHz)

Impedance: 50 Ohms

Finish: Passivated Stainless Steel



Mouser Electronics

Authorized Distributor

Click to View Pricing, Inventory, Delivery & Lifecycle Information:

[Cinch Connectivity Solutions:](#)

[ADT-2807-SM-BMF-02](#)