

### SMA Male Plug to BMA Female Jack

#### Model Number

**ADT-2768-SM-BMF-02**

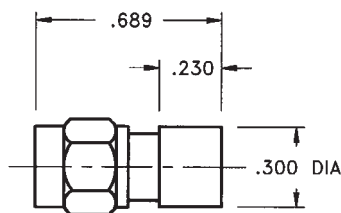
#### SPECIFICATIONS

**Frequency:** DC - 18.0 GHz

**VSWR:**  $1.05 + .005 f$  (GHz)

**Impedance:** 50 Ohms

**Finish:** Passivated Stainless Steel



### SMA Bulkhead Female Jack to BMA Female Jack

#### Model Number

**ADT-2805-SF-BMF-02**

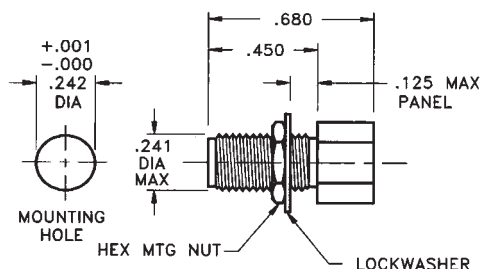
#### SPECIFICATIONS

**Frequency:** DC - 18.0 GHz

**VSWR:**  $1.05 + .005 f$  (GHz)

**Impedance:** 50 Ohms

**Finish:** Passivated Stainless Steel



### SMA Female Jack to BMA Female Jack - Bulkhead Mount

#### Model Number

**ADT-2806-SF-BMF-02**

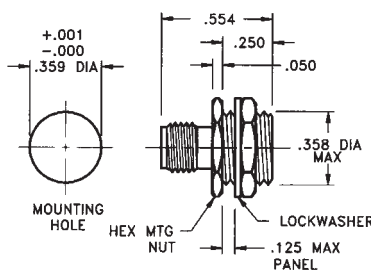
#### SPECIFICATIONS

**Frequency:** DC - 18.0 GHz

**VSWR:**  $1.05 + .005 f$  (GHz)

**Impedance:** 50 Ohms

**Finish:** Passivated Stainless Steel



### SMA Male Plug to BMA Female Jack - Bulkhead Mount

#### Model Number

**ADT-2807-SM-BMF-02**

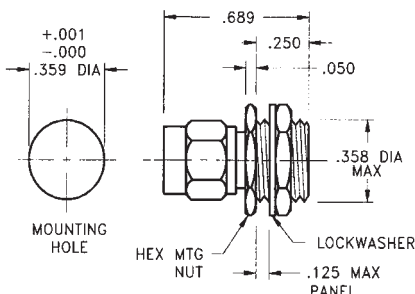
#### SPECIFICATIONS

**Frequency:** DC - 18.0 GHz

**VSWR:**  $1.05 + .005 f$  (GHz)

**Impedance:** 50 Ohms

**Finish:** Passivated Stainless Steel



# Mouser Electronics

Authorized Distributor

Click to View Pricing, Inventory, Delivery & Lifecycle Information:

[Cinch Connectivity Solutions:](#)

[ADT-2806-SF-BMF-02](#)