

Coax/Triax Adapters

Interface Solutions for Test Environments and Communication Systems

Today's complex cabling systems often incorporate the use of different cable types. The need to interface triax to SMA or SMP coax connectors often comes up in test environments and communication systems. Trompeter offers a complete line up of adapters to provide high quality signal integrity when moving from one cable type to another.



Part No: 305-1932



Part No: 3-0347



Part No: 3-0349



Part No: 3-0350



Part No: 3-0351

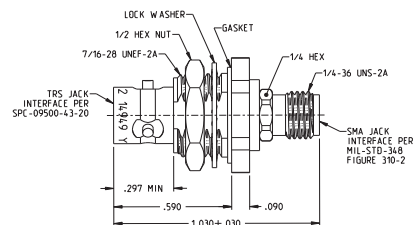
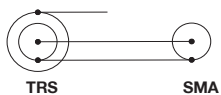
Features

- All metallic parts are machined/formed to extremely close tolerances
- All bodies are made of top quality brass with nickel-plated nontarnish finish
- Fully enclosed, heat-treated, beryllium-copper outer conductor spring (not half hard slotted brass)
- Heat-treated, beryllium-copper center socket contact with 50 microinches gold plating

Part Number	Description
305-1932	TRS Jack to SMA Jack
3-0347	TRB Jack to SMA Jack
3-0349	TRB Jack to SMP Male Adapter
3-0350	TRS Jack to SMP Male Adapter
3-0351	TRB Plug to SMA Plug Adapter

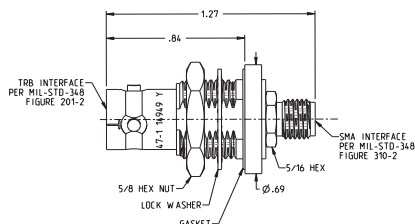
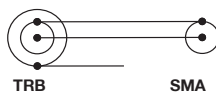
TRS Jack to SMA Jack Bulkhead Adapter

Part No	Description	Keying Options
305-1932	TRS Jack to SMA Jack Bulkhead Adapter	Contact Factory



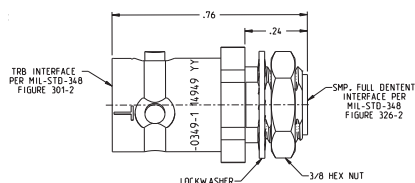
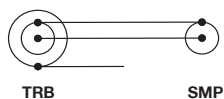
TRB Jack to SMA Bulkhead Adapter

Part No	Description	Keying Options
3-0347	TRB Jack to SMA Bulkhead Adapter	9



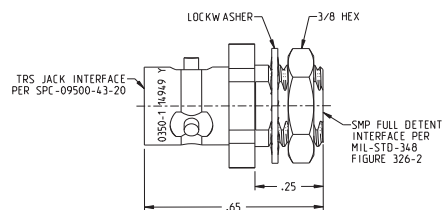
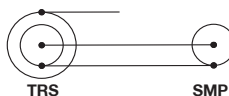
TRB Jack to SMP Male Adapter

Part No	Description	Keying Options
3-0349	TRB Jack to SMP Male Adapter	9



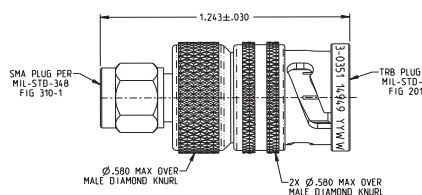
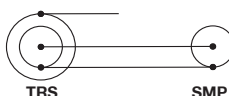
TRS Jack to SMP Male Adapter

Part No	Description	Keying Options
3-0350	TRS Jack to SMP Male Adapter	Contact Factory



TRB Plug to SMA Plug Adapter

Part No	Description	Keying Options
3-0351	TRB Plug to SMA Plug Adapter	Contact Factory



Asia Pacific
+86 21 5442 7668
ccs.asia.sales@as.cinch.com

Europe, Middle East & Africa
+44 (0) 1245 342060
CinchConnectivity@eu.cinch.com

North America
+1 507.833.8822
ccsorders@us.cinch.com

belfuse.com/cinch

Mouser Electronics

Authorized Distributor

Click to View Pricing, Inventory, Delivery & Lifecycle Information:

[Cinch Connectivity Solutions:](#)

[3-0347-9](#) [305-1932](#) [3-0349-9](#) [3-0350-1](#) [3-0351](#)