

## Shielded Cable Assemblies

EMI Pigtails and Jumpers

### Micro D Shielded Cable Assemblies

Cinch Dura-Con D-shaped micro miniature rectangular connectors are designed for applications that require a rugged, high performance, densely compacted interconnect. Dura-Con micro Ds are designed and manufactured in conformance to MIL-DTL-83513. Cinch uses the most reliable “twist pin” contacts to maximize reliability for applications where weight and space must be minimized.

The Dura-Con Micro-D Shielded Cable Assemblies are ideal where signal integrity is a key design requirement. The Shielded Cable Assemblies protect the internal signal pathways from electro magnetic interference (EMI) that is produced from adjacent power cables or from outside EMI generators. The Shielded Cable Assemblies include a grounding spring on the plug and braided sleeves that are bonded to the integrated backshell.

### Features

- Shell and contacts meets ML-DTL-83513 requirements
- EMI gasket and braided sleeves
- Integrated backshell
- Point to point jumper configurations

### Materials

Connector Shell	Aluminum (SAE AMS-QQ-A-250)
Shell Plating	Cadmium or Nickel (SAE AMS-QQ-P-416 or AMS-C-26074)
Contact	Copper alloy. Gold-plated per MIL-DTL-45204, Type 1

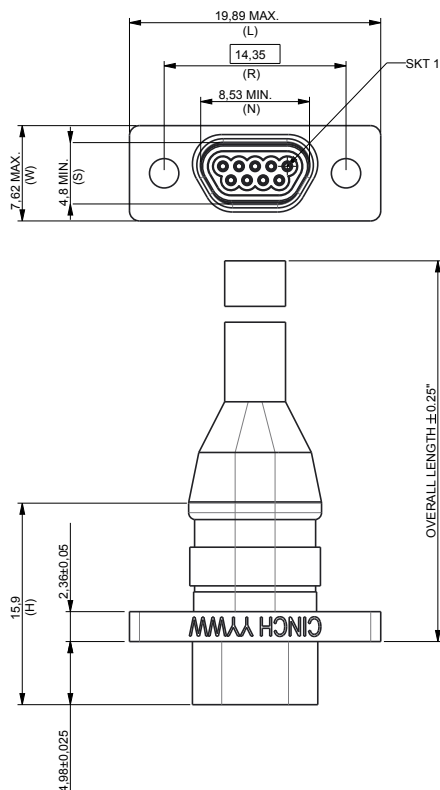
### Electrical

Current Rating	3 Amps maximum
Temperature Rating	-55 °C TO +135 °C
Insulation Resistance	1,000 Megaohms minimum between contacts
DWV at Seal Level	600 Vac
DWV 70,000 feet Altitude	150 Vac
Contact Resistance	8 mΩ max

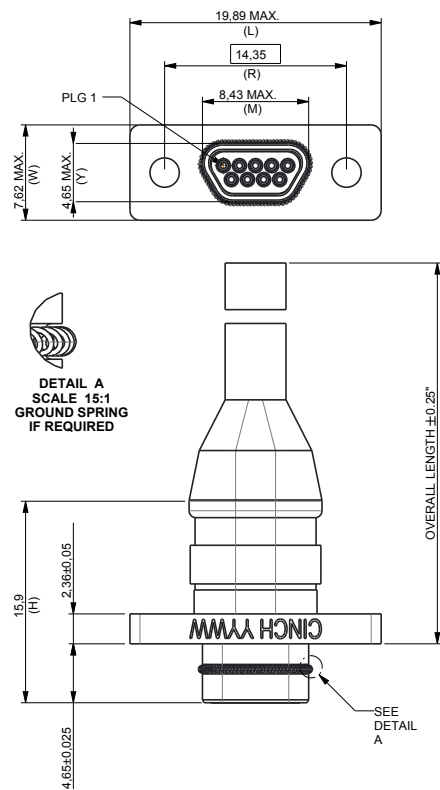
# Specifications

Dura-Con™

## Socket Connector



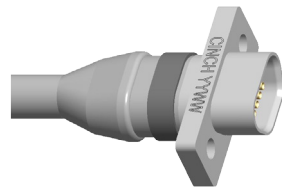
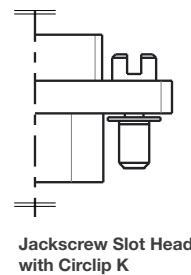
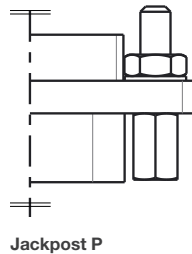
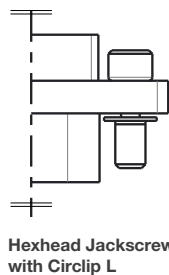
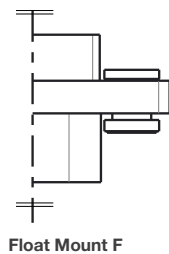
## Plug Connector



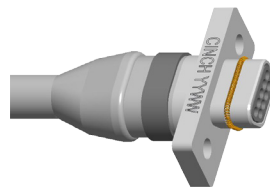
## Hardware

Termination Side

Connector Side



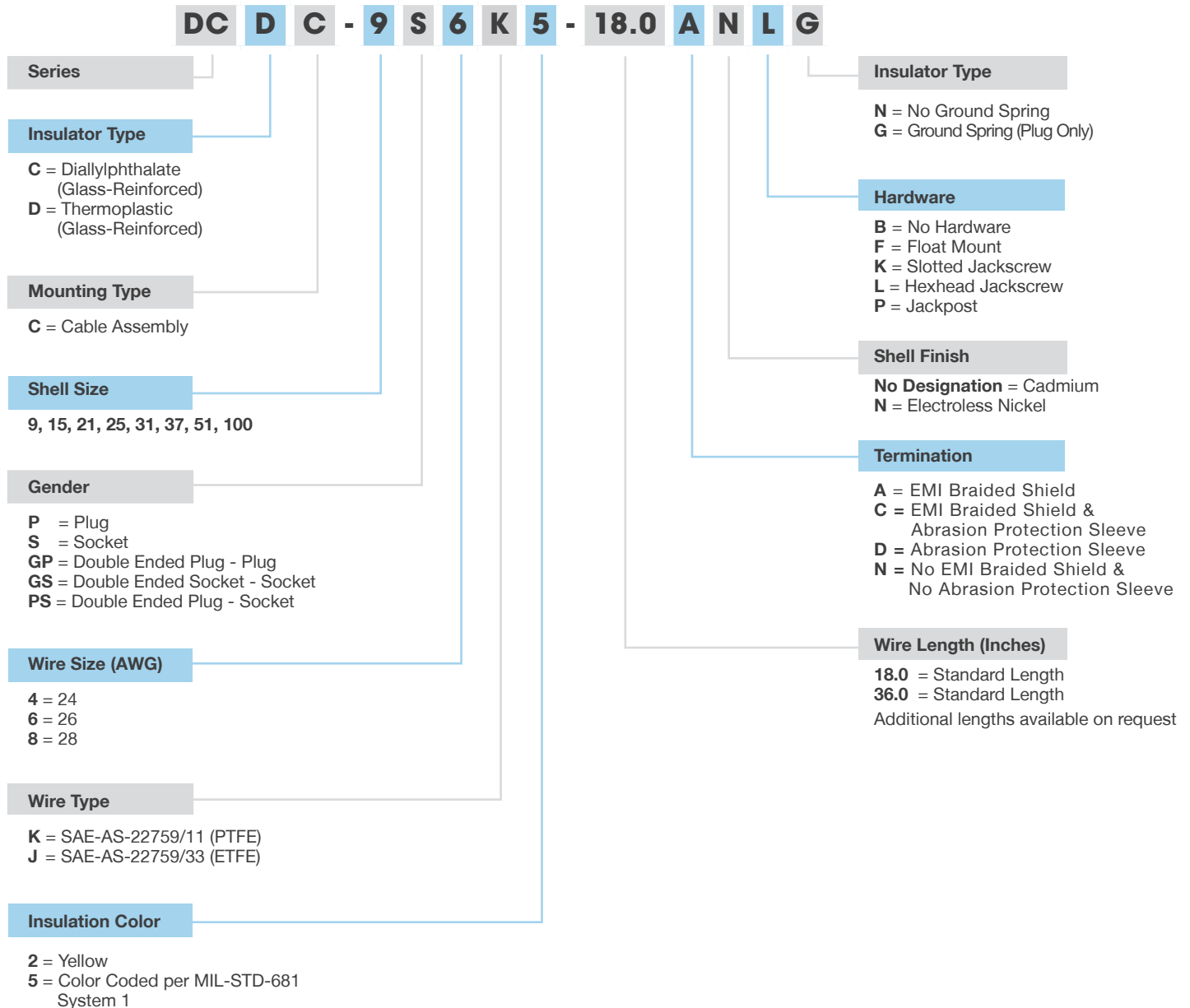
Socket Connector



Plug Connector with EMI Gasket

# Ordering Information

**Dura-Con™**



**Asia Pacific**  
 +86 21 5442 7668  
 ccs.asia.sales@as.cinch.com

**Europe, Middle East & Africa**  
 +44 (0) 1245 342060  
 CinchConnectivity@eu.cinch.com

**North America**  
 +1 507.833.8822  
 inquiry@us.cinch.com

[belfuse.com/cinch](http://belfuse.com/cinch)

# Mouser Electronics

Authorized Distributor

Click to View Pricing, Inventory, Delivery & Lifecycle Information:

## Cinch Connectivity Solutions:

[DCDC9P6K5-36.0ANLG](#) [DCDC37P6K5-36.0ANLG](#) [DCDC100P6K5-36.0ANLG](#) [DCDC21P6K5-36.0ANLG](#)  
[DCDC15P6K5-36.0ANLG](#) [DCDC31P6K5-36.0ANLG](#) [DCDC25P6K5-36.0ANLG](#) [DCDC51P6K5-36.0ANLG](#)  
[DCDC100GP6K5-36.0ANLG](#) [DCDC15GP6K5-36.0ANLG](#) [DCDC21GP6K5-36.0ANLG](#) [DCDC51GP6K5-36.0ANLG](#)  
[DCDC9GP6K5-36.0ANLG](#) [DCDC25GP6K5-36.0ANLG](#) [DCDC31GP6K5-36.0ANLG](#) [DCDC37GP6K5-36.0ANLG](#)