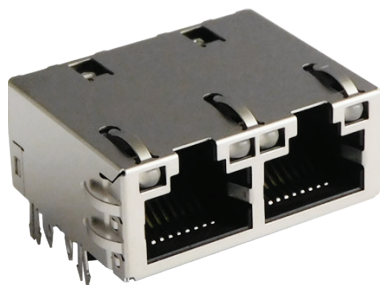
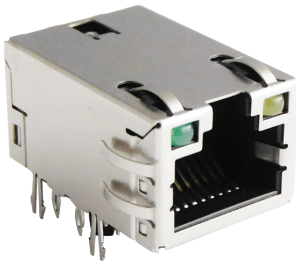


Press-Fit ICMs

Single and Dual Port 1GBaseT MagJack® ICMs

Bel Magnetic Solutions' Press-Fit ICMs are designed for applications and processing scenarios that require a connector that can be pressed onto the PCBA instead of traditional soldering techniques. With the number and type of products connecting to the internet continuing to increase, there come non-traditional applications where normal soldered connectors will not work, resulting in a growing requirement for press-fit type ICM connectors to be used alongside other press-fit I/O connectors on the board.

There is also a growing market segment of applications where the PCBA layer count has grown, creating relatively thick boards where the normal solder lead length cannot be used. Bel Magnetic Solutions' Press-Fit ICMs are not biased to the board thickness and only need a minimum thickness of 0.080in (2.03mm) with no maximum thickness.



Features & Benefits

- Available in 1x1, 1x2 and 2x1 port configurations
- Standard 1GBaseT magnetics design
- Robust eye-of-the-needle design
- Accommodates any network interface configuration for a device needing to be plugged into the network
- Accommodates any board thickness of 0.080in (2.03mm) or greater
- ICMs are compatible with all major Ethernet PHYs on the market

Specifications

- Meets all IEEE 802.3 1GBase-T electrical requirements including RL, IL, Hi-pot and Common Mode parameters
- Operating temperature range of 0°C to 70°C or as specified
- 100% Hi-pot tested in production
- Built in LEDs
- UL recognized
- RoHS 6/6 compliant



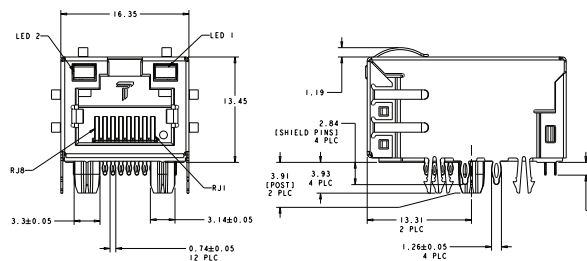
Applications

- Single board computers
- Network adaptor cards
- Designs where a press-fit ICMs is needed
- Applications where the PCBA is thicker than 0.150in (3.81mm). Product can be used for traditional board thicknesses as well
- Non-traditional equipment where an Ethernet port is needed – such as commercial refrigeration, cooking, processing, factory automation

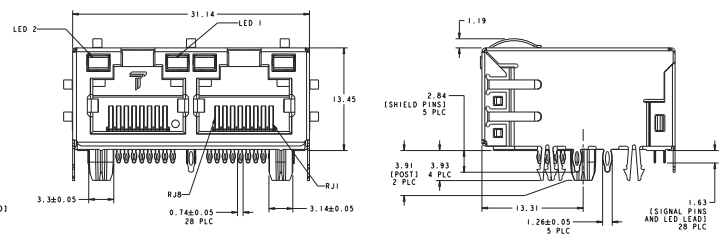
Part Numbers

Bel Part Number	Speed	Port Configuration	Port Count	Operating Temperature	LED	LED Type
1840772-8	1GBase-T	Tab Up	1x1	0 to 70°C	Yes	G/Y
1840572-6	1GBase-T	Tab Up	1x2	0 to 70°C	Yes	GY/GY
1840572-7	1GBase-T	Tab Up	1x2	0 to 70°C	Yes	G/G
08G0-281D-GUA	1GBase-T	Both	2x1	0 to 70°C	No	Light-pipe

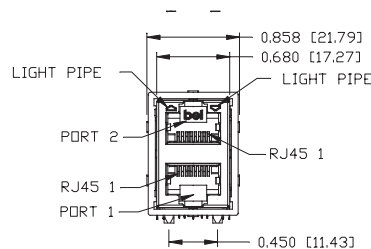
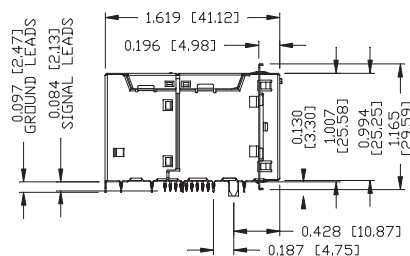
1840772-8



1840572-6, 1840572-7



08G0-281D-GUA



Mouser Electronics

Authorized Distributor

Click to View Pricing, Inventory, Delivery & Lifecycle Information:

Bel:

[1840572-6](#) [1840572-7](#) [1840772-8](#) [08G0-281D-GUA](#)