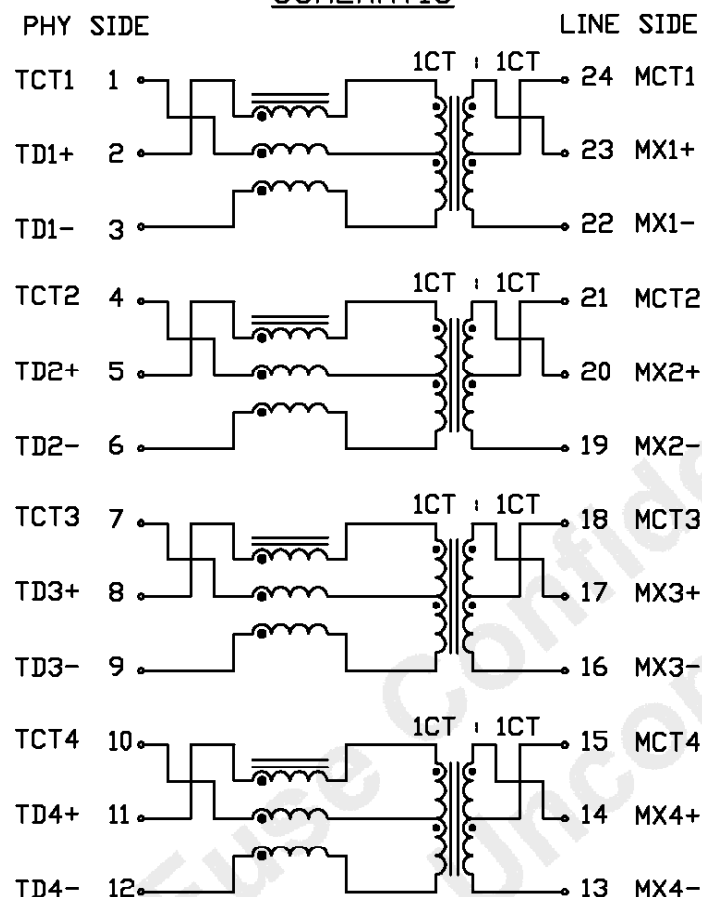


RoHS 

SCHEMATIC



(2-1-3) : (23-24-22)
(5-4-6) : (20-21-19)
(8-7-9) : (17-18-16)
(11-10-12) : (14-15-13)

1CT	1CT	±2%
1CT	1CT	±2%
1CT	1CT	±2%
1CT	1CT	±2%

PER DOT CONVENTION

0CL
0°C TO 70°C
0°C TO 70°C

100kHz, 100mV
180uH MIN WITH 8mA DC BIAS
120uH MIN WITH 19mA DC BIAS

①1MHz, 20mV
30pF MAX



PARAMETER		MAGNITUDE (IN dB)	FREQUENCY (IN MHz)	
			START	END
INSERTION LOSS	SDD12 , SDD21	-0.004<F/MHz)-0.4 MAX	1	150
RETURN LOSS	SDD11 , SDD22	-20 MIN	1	40
		-20+15LOG<F/40MHz) MIN	40	150
ALIEN NEAR END CROSSTALK	SDDXY'	-46+7LOG<F/125MHz) MIN	1	150
NEAR END CROSSTALK	SDDXY	-35 MIN	1	40
		-35+15LOG<F/40MHz) MIN	40	150
MODE CONVERSION	SDC12	-35 MIN	1	40
		-35+17LOG<F/40MHz) MIN	40	150
	SDC21	-30 MIN	1	40
		-30+11LOG<F/40MHz) MIN	40	150
COMMON MODE REJECTION	SCC21	-25 MIN	1	150

BALANCED DC LINE CURRENT

720mA MAX @57VDC CONTINUOUS
1.2A MAX @57VDC FOR 200MS

HIPOT

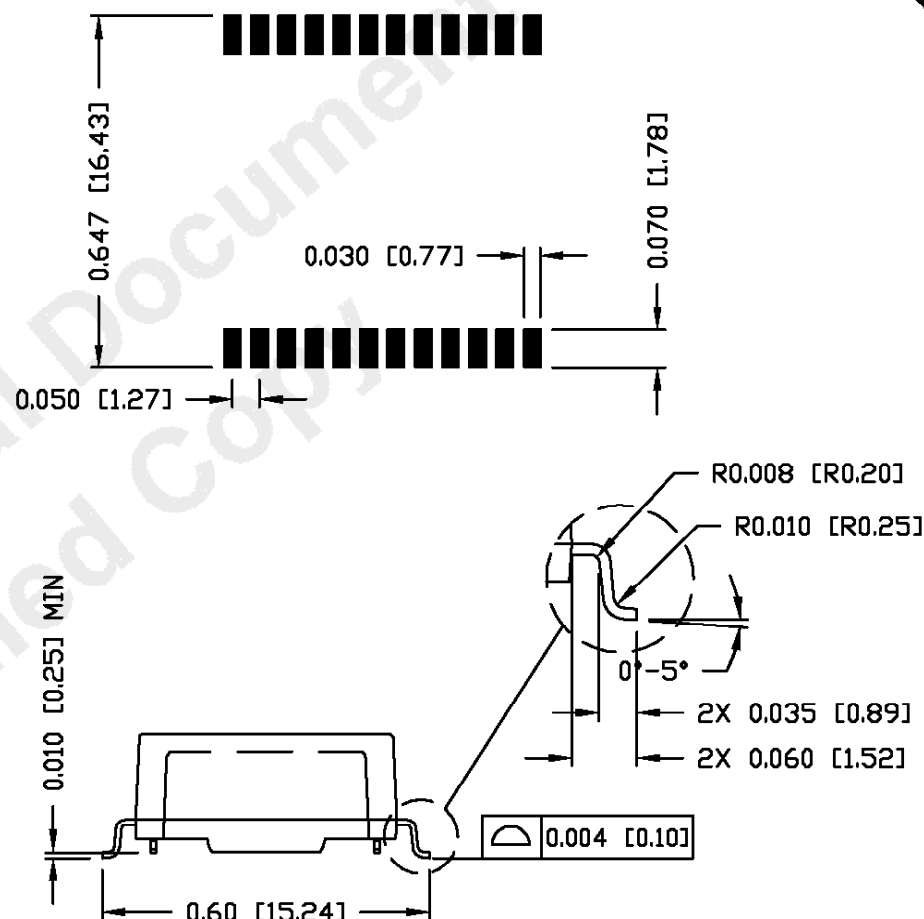
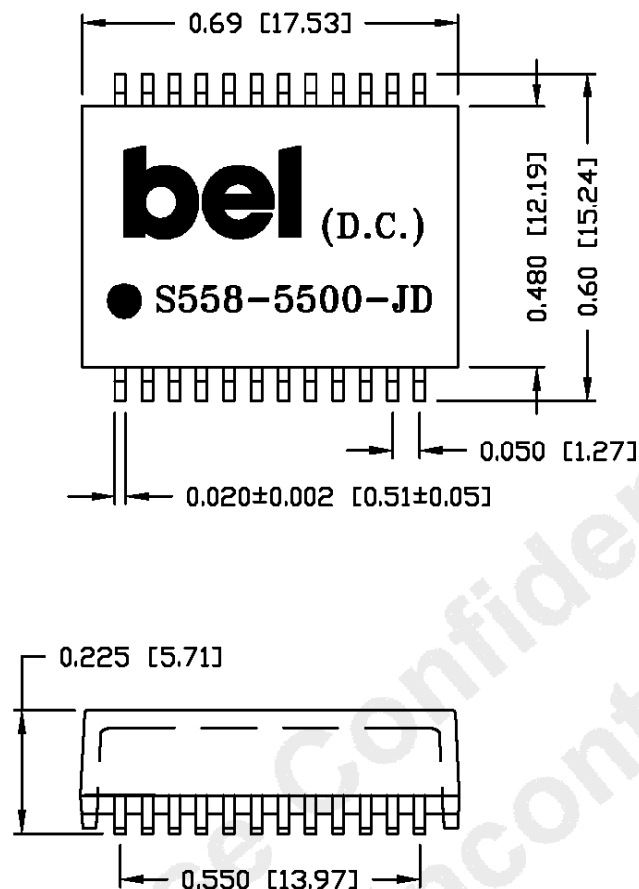
LEAKAGE CURRENT LESS THAN 1mA AT 1500VAC

ORIGINATED BY	DATE	TITLE	PART NO. / DRAWING NO.	STANDARD DIM.		[] METRIC DIM. AS REF.		
Alice Pang	2020-06-29			S558-5500-JD		TOL. IN INCH		
DRAWN BY	DATE		FILE NAME	.X		UNIT : INCH [mm]		
ZC Guo	2020-06-29			S5585500JDC.DWG		SCALE : N/A		
		ELECTRICAL SPECIFICATION		.XX				SIZE : A4
				.XXX				

THE INFORMATION CONTAINED HEREIN IS CONSIDERED "PROPRIETARY" TO BEL FUSE INC. AND SHALL NOT BE COPIED, REPRODUCED OR DISCLOSED WITHOUT THE WRITTEN APPROVAL OF BEL FUSE INC.





SUGGESTED PCB PAD LAYOUT



NOTES:

1. STANDARD MARKING REFER TO DOC. HAND-WORK-04.
2. PACKAGE CODE: "RQS001".

ORIGINATED BY		DATE	TITLE	PART NO. / DRAWING NO.	STANDARD DIM.		[] METRIC DIM. AS REF.				
Lawrence Tsang		2017-09-11			S558-5500-JD		TOL. IN INCH			UNIT : INCH [mm]	
DRAWN BY		DATE			FILE NAME		.X			SCALE : N/A	
ZC Guo		2017-09-11	MECHANICAL OUTLINE	S5585500JDA.DWG		.XX		±0.01			SIZE : A4
						.XXX		±0.005			

REV. : A PAGE : 3



Mouser Electronics

Authorized Distributor

Click to View Pricing, Inventory, Delivery & Lifecycle Information:

[Bel:](#)

[S558-5500-JD](#)