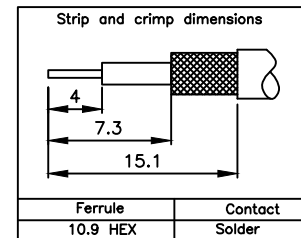
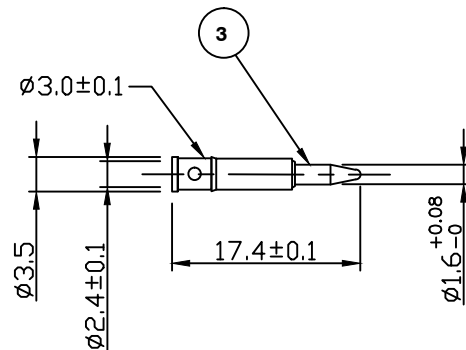
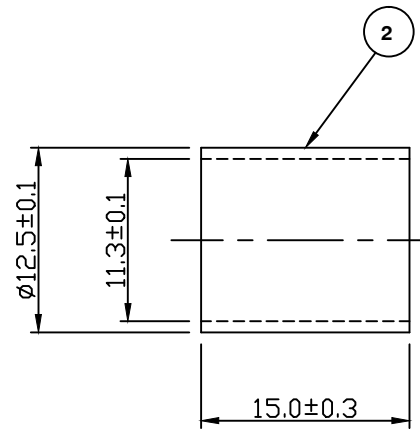
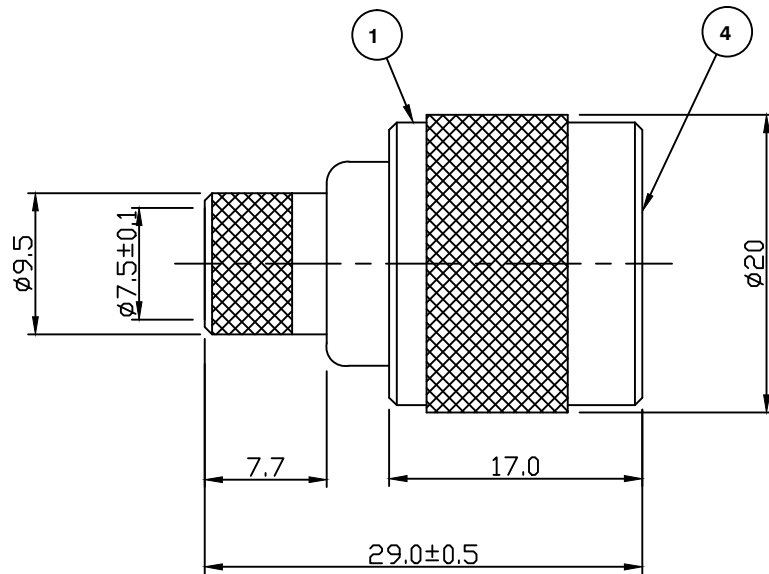


RoHS COMPLIANT



Electrical Characteristics

Nominal Impedance:	50 ohms
Frequency Range:	DC to 11 GHz
VSWR	1.35:1 maximum
Insertion Loss	0.17 dB max
Operating Voltage (rms):	1500 V maximum at sea level
Dielectric Withstand Voltage (rms):	2500 V maximum at sea level
Contact Resistance:	1.0 milliohms maximum
Insulation Resistance:	5000 megohms minimum

Mechanical Characteristics

Mating Cycles:	500 cycles minimum
Interface Dimensions:	Conform to MIL-C-39012

Environmental Characteristics

Temperature Range:	-65 °C to +165 °C
--------------------	-------------------

	PART	DESCRIPTION
1	Body	Brass, nickel plated 2.54 µm
2	Ferrule	Brass, nickel plated 2.54 µm
3	Contact	Brass, gold plated 0.076 µm - 0.127 µm
4	Dielectric	PTFE

Dimensions Update - D17465	MS	8	14 Apr 21
Ferrule & Contact Dimensions Modified	JT	7	02 Mar 10
Crimp dimension was 3.3mm	PDC	6	04 Oct 02
CAD Issue	SN	5	14 Aug 02
Ferrule Dimension Modified	PDC	4	04 Oct 00
New Dimensions	RS	3	28 Jun 99
New Internal Design	DH	2	12 May 98
First Issue	AT	1	02 Feb 95
DESCRIPTION OF REVISION	APPVD	ISS	DATE

For stripping and assembly instructions see Drawing Number: VAIN1101



CINCH CONNECTIVITY
SOLUTIONS
11 Bilton Road,
Chelmsford, Essex,
CM1 2UP, UK.
Tel: +44 (0) 1245 359515
Fax: +44 (0) 1245 358938

SCALE: Not To Scale

DIMENSIONS: mm

TOLERANCES:
± 0.2mm unless
otherwise stated

DRAWN BY:

P D Couzens

CHECKED BY:

S Nash

APPROVED BY:

S Nash

DATE:

04 Oct 02

TITLE:

N Crimp Plug for RG213

PART NUMBER:

VN10-2020

PAGE: 1 of 1

Mouser Electronics

Authorized Distributor

Click to View Pricing, Inventory, Delivery & Lifecycle Information:

[Cinch Connectivity Solutions:](#)

[VN10-2020](#)