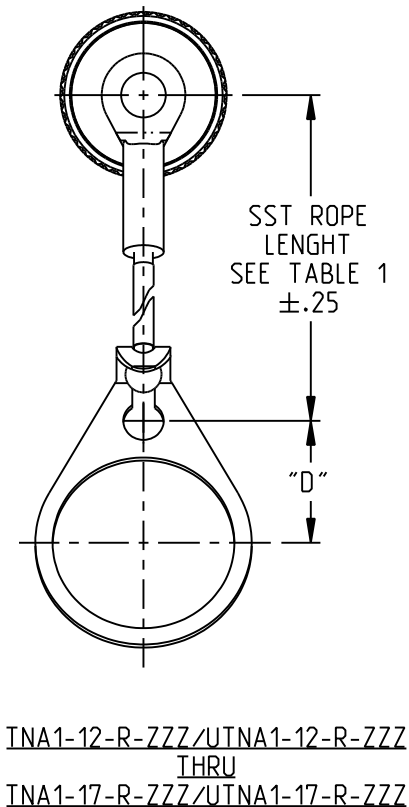
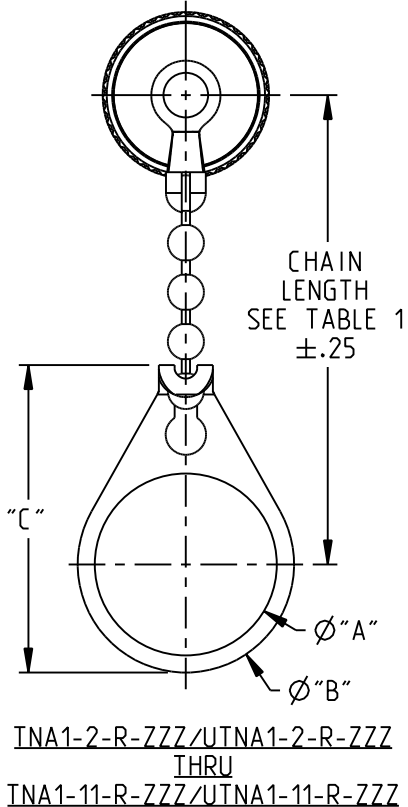
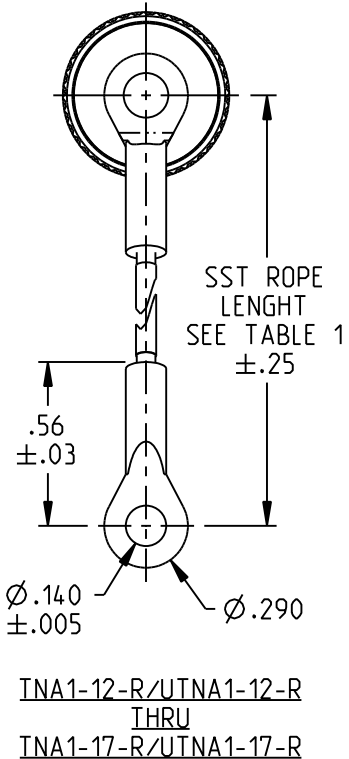
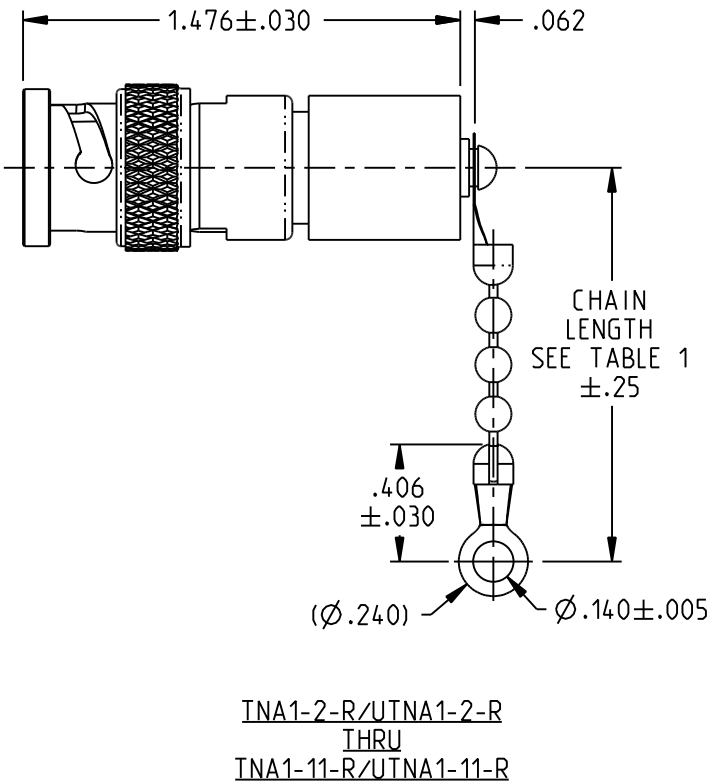
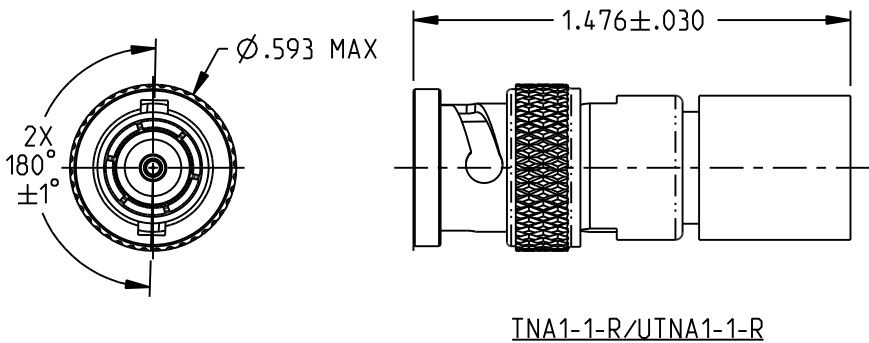
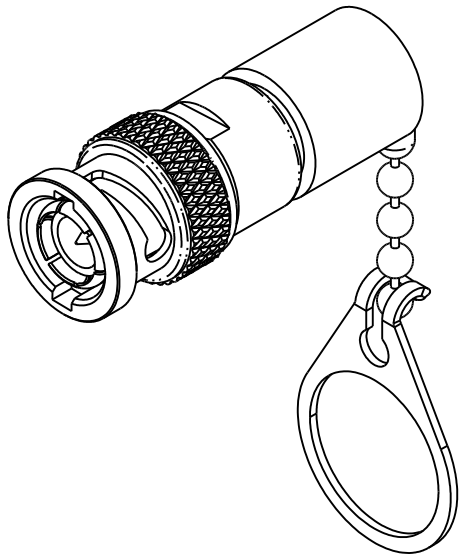


TABLE 1	
MODEL NUMBER	LANYARD MATERIAL & LENGTH
TNA1-1-R & UTNA1-1-R	CAP ONLY (NO LANYARD)
TNA1-2-R & UTNA1-2-R	2.5 BRASS BEAD CHAIN
TNA1-3-R & UTNA1-3-R	2.5 NYLON BEAD CHAIN
TNA1-4-R & UTNA1-4-R	3.0 BRASS BEAD CHAIN
TNA1-5-R & UTNA1-5-R	3.0 NYLON BEAD CHAIN
TNA1-6-R & UTNA1-6-R	6.0 BRASS BEAD CHAIN
TNA1-7-R & UTNA1-7-R	6.0 NYLON BEAD CHAIN
TNA1-8-R & UTNA1-8-R	4.0 BRASS BEAD CHAIN
TNA1-9-R & UTNA1-9-R	4.0 NYLON BEAD CHAIN
TNA1-10-R & UTNA1-10-R	10.0 BRASS BEAD CHAIN
TNA1-11-R & UTNA1-11-R	10.0 NYLON BEAD CHAIN
TNA1-12-R & UTNA1-12-R	2.5 STAINLESS STEEL ROPE
TNA1-14-R & UTNA1-13-R	3.0 STAINLESS STEEL ROPE
TNA1-14-R & UTNA1-14-R	6.0 STAINLESS STEEL ROPE
TNA1-15-R & UTNA1-15-R	4.0 STAINLESS STEEL ROPE
TNA1-16-R & UTNA1-16-R	7.0 STAINLESS STEEL ROPE
TNA1-17-R & UTNA1-17-R	4.5 STAINLESS STEEL ROPE

TABLE 2		Ø"A"	Ø"B"	"C"	"D"
TNA1-2-R-D2 THRU TNA1-17-R-D2	UTNA1-2-R-D2 THRU UTNA1-17-R-D2	.630	.750	1.066	.450
TNA1-2-R-D3 THRU TNA1-17-R-D3	UTNA1-2-R-D3 THRU UTNA1-17-R-D3	.505	.625	.941	.388
TNA1-2-R-D4 THRU TNA1-17-R-D4	UTNA1-2-R-D4 THRU UTNA1-17-R-D4	.439	.562	.878	.355
TNA1-2-R-D5 THRU TNA1-17-R-D5	UTNA1-2-R-D5 THRU UTNA1-17-R-D5	.380	.500	.816	.325
TNA1-2-R-D6 THRU TNA1-17-R-D6	UTNA1-2-R-D6 THRU UTNA1-17-R-D6	.317	.437	.753	.295
TNA1-2-R-D7 THRU TNA1-17-R-D7	UTNA1-2-R-D7 THRU UTNA1-17-R-D7	.281	.406	.722	.278
TNA1-2-R-D8 THRU TNA1-17-R-D8	UTNA1-2-R-D8 THRU UTNA1-17-R-D8	.610	.750	1.066	.450
TNA1-2-R-D9 THRU TNA1-17-R-D9	UTNA1-2-R-D9 THRU UTNA1-17-R-D9	.567	.687	1.003	.419
TNA1-2-R-D10 THRU TNA1-17-R-D10	UTNA1-2-R-D10 THRU UTNA1-17-R-D10	.192	.312	.628	.231
TNA1-2-R-DD8 THRU TNA1-17-R-DD8	UTNA1-2-R-DD8 THRU UTNA1-17-R-DD8	.330	.450	.766	.300

TABLE 3		
MODEL NUMBER	INTERFACE IMPEDANCE	RESISTANCE (OHMS)
TNA1-YY-50-ZZZ	50	50
TNA1-YY-75-ZZZ	50	75
TNA1-YY-95-ZZZ	50	95
TNA1-YY-150-ZZZ	50	150
TNA1-YY-200-ZZZ	50	200
TNA1-YY-S-ZZZ	50	0 (SHORT)
TNA1-YY-O-ZZZ	50	KIT
UTNA1-YY-75-ZZZ	75	75



NOTES: UNLESS OTHERWISE SPECIFIED.

1. MATERIAL & FINISH:

- 1.1 BAYONET SLEEVE: NICKEL PLATED BRASS
- 1.2 GASKET: SILICONE RUBBER
- 1.3 DRIVE SCREW: PASSIVATED STAINLESS STEEL
- 1.4 BEAD CHAIN ASSY:
 - 1.4.1 NICKEL PLATED BRASS
 - 1.4.2 NYLON, WHITE
 - 1.4.3 #6 END RING: NICKEL PLATED BRASS
- 1.5 STAINLESS STEEL ROPE ASSY:
 - 1.5.1 CABLE: STAINLESS STEEL COVERED w/BLACK NYLON JACKET
 - 1.5.2 END RING: PASSIVATED STAINLESS STEEL
- 1.6 BULKHEAD MOUNTING LUG: NICKEL PLATED BRASS

2. EXAMPLE OF COMPLETE MODEL NUMBER:

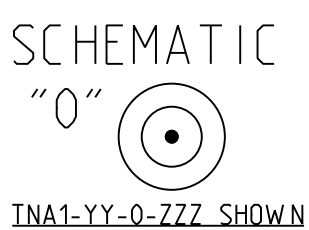
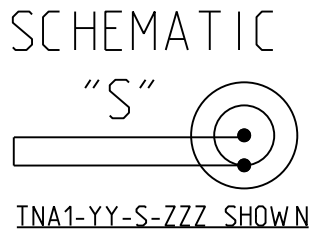
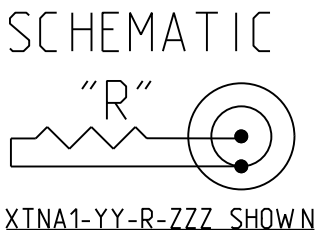
UTNA1 - YY - 50 - D2

BLKHD JACK MTG LUG
OPTION PER TABLE 2

RESISTANCE VALUE PER TABLE 3

LANYARD OPTION PER TABLE 1

BASIC MODEL NUMBER PER TABLE 3



		3RD ANGLE PROJECTION		TROMPETER	
NOTICE: The information in this drawing is PROPRIETARY and must not be used without the permission of Cinch Connectivity Solutions. It may contain data whose export is restricted. Verify status prior to exporting.		RoHS2 2015/863/EU		Title: BNC PLUG TERMINATION	
UNLESS OTHERWISE SPECIFIED UNITS: INCH .XX ±.02 .XXX ±.010 ANGLES ±2		Model No. XTNA1-YY-R-ZZZ		Size B	
INTERPRET DRAWING IN ACCORDANCE WITH ASME Y14.5-2018		DO NOT SCALE DRAWING		Date: 6/5/2023	
				Sheet 1 OF 1	

Mouser Electronics

Authorized Distributor

Click to View Pricing, Inventory, Delivery & Lifecycle Information:

[Cinch Connectivity Solutions:](#)

[UTNA1-9-75](#)