

DATA CONTAINED ON THIS DOCUMENT IS  
 PROPRIETARY TO TROMPETER ELECTRONICS, INC.  
 AND SHALL NOT BE DISCLOSED, COPIED, REPRODUCED,  
 OR IN ANY MANNER USED FOR REPRODUCTION WITHOUT  
 EXPRESS WRITTEN PERMISSION.

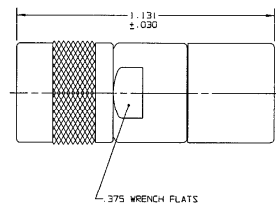
REV		ECD		REVISIONS		DESCRIPTION		DATE	
M		13543		NOTE 4		SHEET 2 SEE ECD		R L	
								OWN APPROVED	
								DATE	

RED INDICATES ORIGINAL

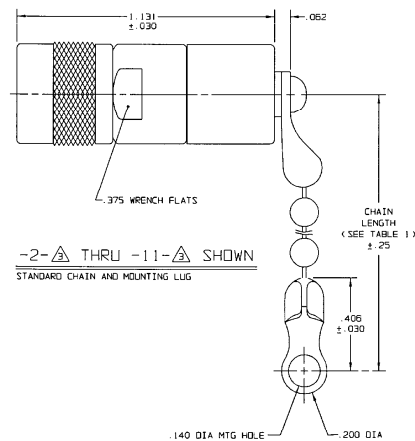
TABLE 1	
DASH NO	DESCRIPTION
-1	TERM (NO CHAIN)
-2	TERM WITH 2.5 BRASS CHAIN
-3	TERM WITH 2.5 NYLON CHAIN
-4	TERM WITH 3.0 BRASS CHAIN
-5	TERM WITH 3.0 NYLON CHAIN
-6	TERM WITH 6.0 BRASS CHAIN
-7	TERM WITH 6.0 NYLON CHAIN
-8	TERM WITH 4.0 BRASS CHAIN
-9	TERM WITH 4.0 NYLON CHAIN
-10	TERM WITH 10.0 BRASS CHAIN
-11	TERM WITH 10.0 NYLON CHAIN
-12	TERM WITH 2.5 SST ROPE
-13	TERM WITH 3.0 SST ROPE
-14	TERM WITH 6.0 SST ROPE
-15	TERM WITH 4.0 SST ROPE
-16	TERM WITH 7.5 SST ROPE
-17	TERM WITH 4.5 SST ROPE

TABLE 2				
DASH NO	"A" DIA	"B" DIA	"C" DIM	"D" DIM
-02	630	750	1.066	450
-03	505	625	941	388
-04	439	562	878	355
-05	380	500	816	325
-06	317	437	753	295
-07	281	406	722	278
-08	610	750	1.066	450
-09	567	667	1.003	419
-008	330	450	786	300

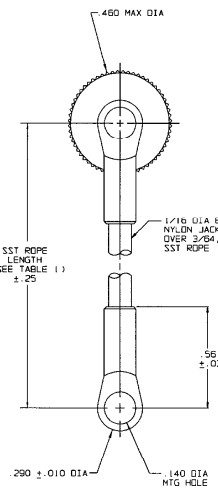
INCH	MM	INCH	MM	INCH	MM	INCH	MM	INCH	MM
.005	0.13	.290	7.37	.406	10.31	.567	14.40	.878	22.30
.010	0.25	.295	7.49	.419	10.64	.610	15.49	.941	23.90
.030	0.76	.300	7.62	.437	11.10	.625	15.88	1.003	25.48
.032	0.81	.317	8.05	.439	11.15	.630	16.00	1.066	27.08
.062	1.57	.325	8.25	.450	11.43	.687	17.45	1.131	28.73
.140	3.56	.330	8.38	.460	11.68	.722	18.34	2.5	63.50
.200	5.08	.355	9.02	.500	12.70	.750	19.05	3.0	76.20
.25	6.35	.375	9.53	.505	12.83	.753	19.13	4.0	101.60
.278	7.06	.380	9.65	.56	14.22	.766	19.46	4.5	114.30
.281	7.14	.388	9.86	.562	14.27	.816	20.73	6.0	152.40



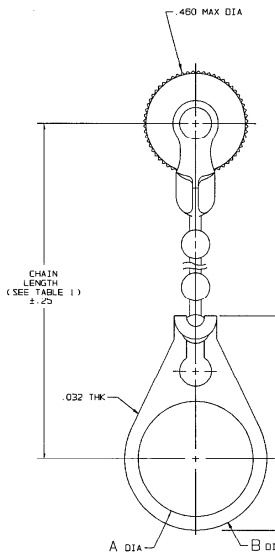
-1-  $\Delta$  SHOWN  
 NO CHAIN STAINLESS STEEL  
 ROPE OR MOUNTING LUG



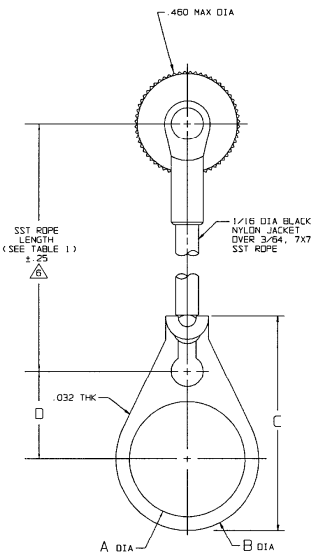
-2-  $\Delta$  THRU -11-  $\Delta$  SHOWN  
 STANDARD CHAIN AND MOUNTING LUG



-12-  $\Delta$  THRU  
 -17-  $\Delta$  SHOWN  
 STAINLESS STEEL ROPE  
 AND MOUNTING LUG



-2-  $\Delta$  -02 THRU  
 -11-  $\Delta$  -008 SHOWN  
 STANDARD CHAIN AND BULKHEAD  
 JACK MOUNTING LUG



-12-  $\Delta$  -02 THRU  
 -17-  $\Delta$  -008 SHOWN  
 STAINLESS STEEL ROPE AND BULKHEAD  
 JACK MOUNTING LUG

$\Delta$  NOTE THAT LENGTH FOR SST ROPE  
 WITH MOUNTING LUG OPTION IS NOT  
 MEASURED TO CENTER OF BULKHEAD  
 MOUNTING LUG

5. EXAMPLE OF COMPLETE MODEL NO:

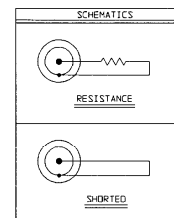
TNEM1-1-  $\Delta$  -02  
 BASIC MODEL NO  
 CHAIN MATL AND  
 LENGTH  
 (SEE TABLE 1)  
 BULKHEAD JACK MOUNTING LUG  
 (OPTIONAL), AVAILABLE  
 WITH BRASS, NYLON CHAIN  
 AND SST ROPE, (SEE TABLE 2)

4. PIN CONTACT TRS SERIES CONCENTRIC TWINAX/  
 TRIAX 3 LUG SUBMINIATURE TERMINATED CABLE PLUG

$\Delta$  RESISTANCE VALUE IN OHMS (1/8, 1/2,  
 5\* = CONTACT SHORTED TO INNER SHIELD (NO RESISTOR) 4  
 0\* = LOOSELY ASSEMBLED (NO RESISTOR)

2. FINISH: TFS-1A (NICKEL)

1. ALL DIM ARE IN INCHES



QTY	DESCRIPTION	PART NUMBER	ITEM
10 (ALL PLS SPECIFIED) XXX 1 005 XXXX	TROMPETER ELECTRONICS, INC.	TNEM1	
OWN 10 L 8/21/00	MATERIAL CODE 108T	DRAWING NO.	REV
CHK DEM 8/21/00	14949	3-0029	M
ENGR			

NEXT ASSY APPROX 1977/78 SCALE 4/1 DATE 8-11-78 SHEET 1C

# Mouser Electronics

Authorized Distributor

Click to View Pricing, Inventory, Delivery & Lifecycle Information:

[Cinch Connectivity Solutions:](#)

[TNGM1-1-78](#)