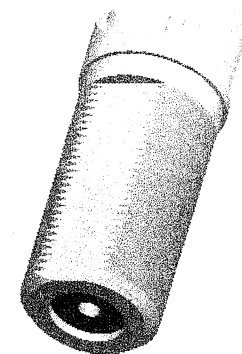


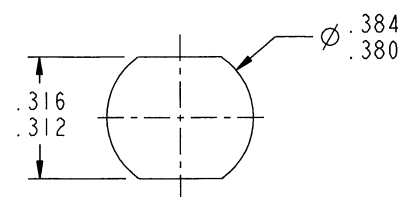
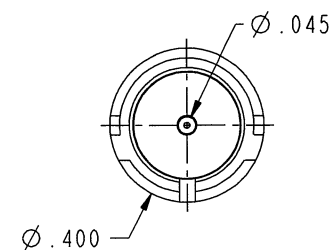
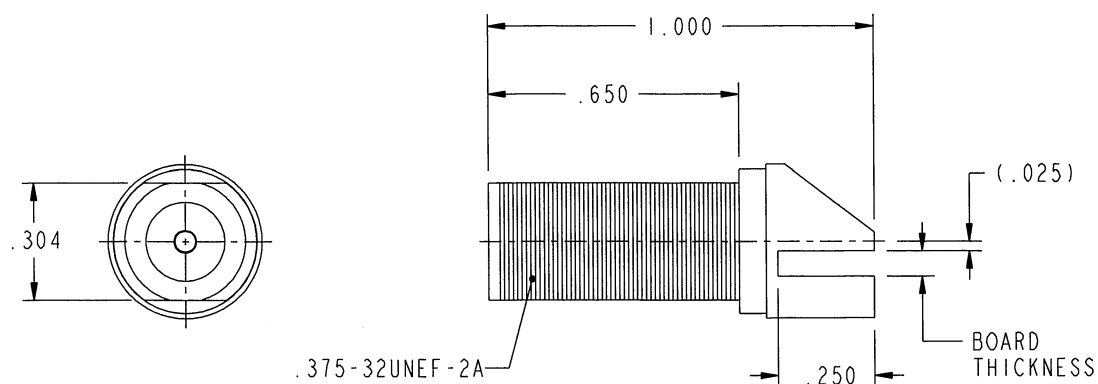
DASH NO	BOARD THICKNESS
-1	.060-.064
-2	.028-.033
-3	.090-.094

DATA CONTAINED IN THIS DOCUMENT IS PROPRIETARY TO TROMPETER ELECTRONICS INC. AND SHALL NOT BE DISCLOSED, COPIED OR USED FOR PROCUREMENT OR MANUFACTURE WITHOUT EXPRESS WRITTEN PERMISSION.

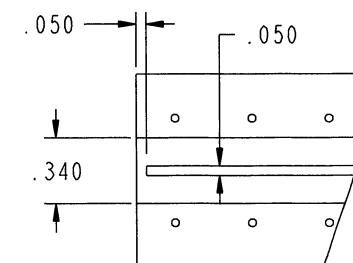
REVISIONS			
REV	DESCRIPTIONS	DATE	APPROVED
F	REVISED PER ECO 16721	8/13/00	max



SCALE 2/1



RECOMMENDED CUT-OUT



RECOMMENDED PCB LAYOUT

3. EXAMPLE OF A COMPLETE MODEL NO.

CBJE130 -1
MODEL DASH NO (SEE TABLE)

2. FINISH: BODY: GOLD
CONTACT: GOLD

1. CIRCUIT BOARD EDGE MOUNT
"F" STYLE FEMALE JACK

NOTES: UNLESS OTHERWISE SPECIFIED.

INTERPRET DRAWING PER MIL-STD-100. DIMENSIONS ARE IN INCHES AND INCLUDE FINISH THICKNESS UNLESS OTHERWISE SPECIFIED.		TOL: UNLESS SPECIFIED. .XX ± .02 .XXX ± .010 ANGLE ± 1°					
DRN J. CARPENTER	08-04-08	MATERIAL:					
CHK M.J.	8-11-08	FINISH:		TITLE: CBJE130			
QUALITY							
MANUF				SIZE	CAGE CODE	DRAWING NO.	REV.
APPROVED Lm	8-12-08			A	14949	1-0579	F
PROJ/FILE NO. 1-0579		DO NOT SCALE DWG		DATE 8-3-01		SHEET 1C	

NEXT ASSY

Mouser Electronics

Authorized Distributor

Click to View Pricing, Inventory, Delivery & Lifecycle Information:

[Cinch Connectivity Solutions:](#)

[CBJE130-1](#) [CBJE130-2](#)