

ELECTRICAL CHARACTERISTICS @25°C

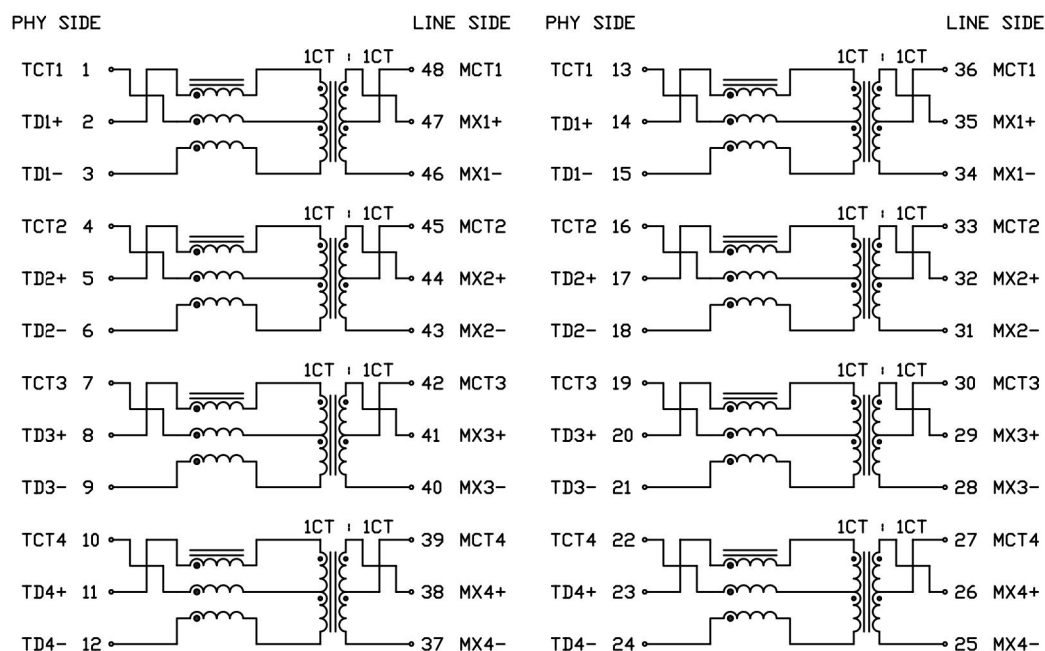
RoHS



SCHEMATIC

PORT 1

PORT 2



URNS RATIO
PHY : LINE

1CT : 1CT $\pm 2\%$

POLARITY

PER DOT CONVENTION

□CL

-40°C TO +85°C
-40°C TO +85°C

@100kHz, 100mV
350uH MIN WITH 11mA DC BIAS
120uH MIN WITH 19mA DC BIAS

DC RESISTANCE (1/2 WINDING)

0.35 Ω HM MAX

INTERWINDING CAPACITANCE, C_{ww}

@1MHz, 20mV
30pF MAX

INSERTION LOSS

0.3MHz - 1MHz
1MHz - 100MHz
100MHz - 125MHz

1.1dB MAX
1.0dB MAX
1.2dB MAX

RETURN LOSS @100 Ω HM

0.5MHz - 40MHz
40MHz - 100MHz

18dB MIN
12-20LOG(f/80MHz)dB MIN

CROSSTALK

0.3MHz - 100MHz

33-20LOG(f/100MHz)dB MIN

CM TO CM REJ

0.3MHz - 100MHz

30dB MIN

CM TO DM REJ

0.3MHz - 100MHz

35dB MIN


BALANCED DC LINE CURRENT

600mA MAX @57VDC CONTINUOUS

HIPOT

1500 Vrms

ORIGINATED BY		DATE	TITLE	PART NO. / DRAWING NO.	STANDARD DIM.		[] METRIC DIM. AS REF.	
Alice Pang		2015-10-29		S558-5500-72	TOL. IN INCH		UNIT : INCH [mm]	
DRAWN BY		DATE		ELECTRICAL SPECIFICATION	FILE NAME	.X	<div></div>	SCALE : N/A
ZC Guo		2015-10-29				S558550072C.DWG		
				.XXX	<div></div>	SIZE : A4		

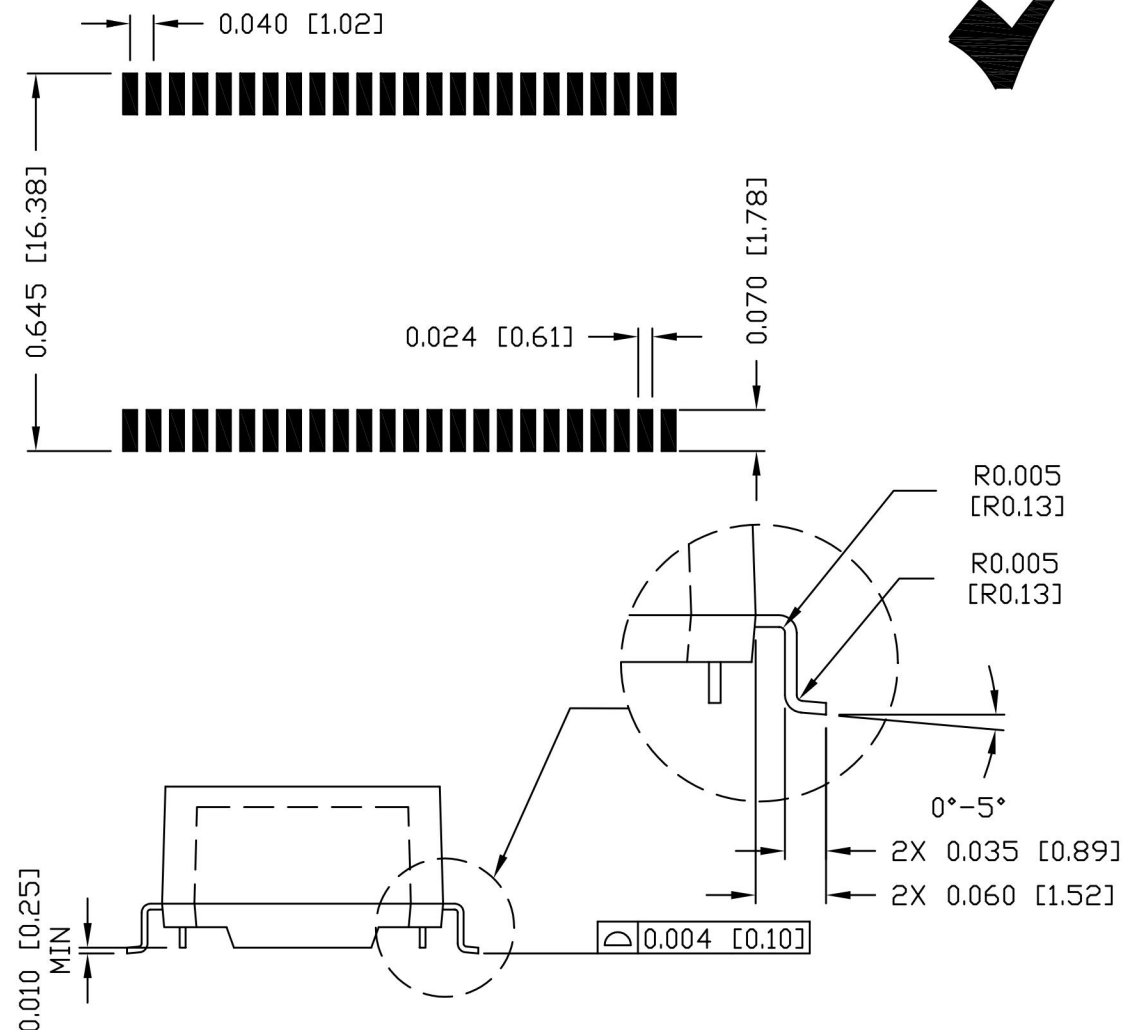
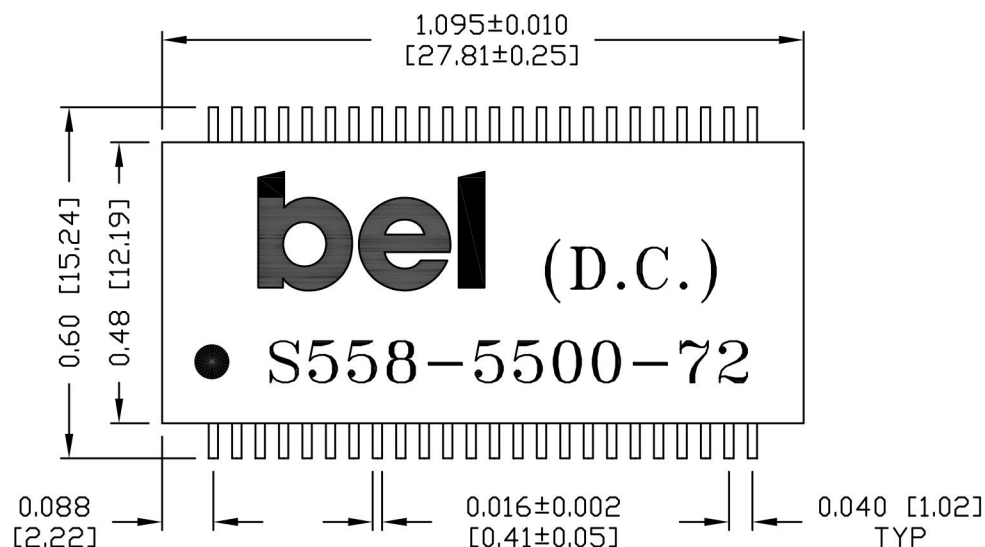


POWER | PROTECT | CONNECT

THE INFORMATION CONTAINED HEREIN IS CONSIDERED "PROPRIETARY" TO BEL FUSE INC. AND SHALL NOT BE COPIED, REPRODUCED OR DISCLOSED WITHOUT THE WRITTEN APPROVAL OF BEL FUSE INC.

SUGGESTED PCB PAD LAYOUT

RoHS



NOTES:

- STANDARD MARKING REFER TO DOC. HAND-WORK-04.
- PACKAGE CODE: "QVS001".

ORIGINATED BY	DATE	TITLE	PART NO. / DRAWING NO.	STANDARD DIM.	[] METRIC DIM. AS REF.	REV. : C	PAGE : 3
Lawrence Tsang	2015-10-29	MECHANICAL OUTLINE	S558-5500-72	TOL. IN INCH	UNIT : INCH [mm]	 POWER PROTECT CONNECT	
DRAWN BY	DATE		FILE NAME	.X	SCALE : N/A		
ZC Guo	2015-10-29		S558550072C.DWG	.XX ± 0.01	SIZE : A4		
				.XXX ± 0.005			

Mouser Electronics

Authorized Distributor

Click to View Pricing, Inventory, Delivery & Lifecycle Information:

Bel:

S558-5500-72