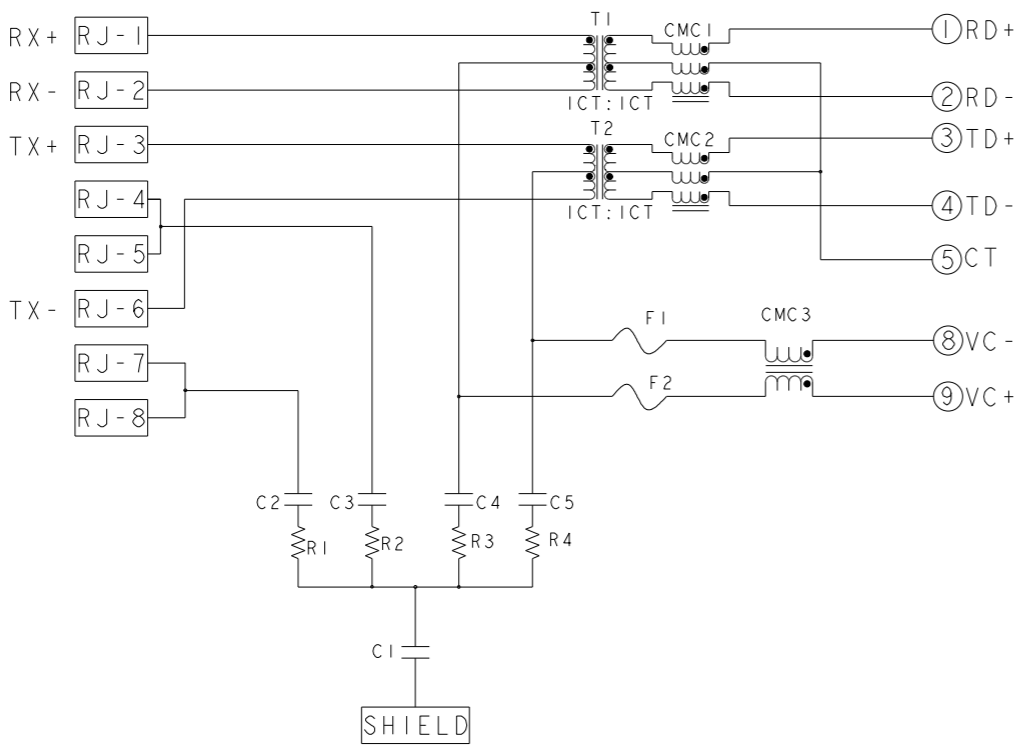
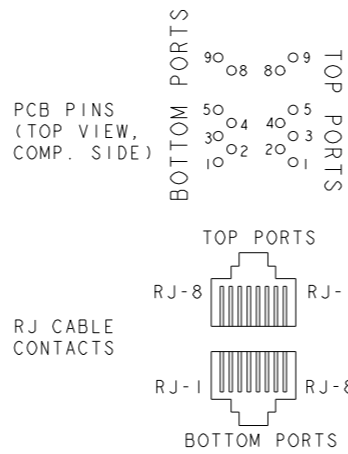


S8H95 10/100 PoE+ CIRCUIT
TOP AND BOTTOM PORTS



C1: 1000pF, 2kV, DECOUPLING CAPACITOR
C2~C5 : 22nF, CAPACITORS
R1~R4 : 75 Ohms, RESISTORS
F1~F2: 1.5A, 63V

PIN DESIGNATIONS
(REPEAT FOR EACH VERTICAL PAIR OF PORTS.)



1. MATERIALS:
PLASTIC HOUSING: BLACK, THERMOPLASTIC FLAMMABILITY RATING UL 94V-0
SHIELD: BRASS, PREPLATED WITH 0.76um MIN SEMI-BRIGHT NICKEL,
POST DIPPED WITH 2.54um MIN SAC SOLDER ON SOLDER TAILS,
CONTACTS: PHOSPHOR BRONZE, 1.27um MIN OVERALL NICKEL
UNDERPLATE WITH SELECT 1.27um MIN GOLD AT MATING INTERFACE
AND 2.54um MIN MATTE TIN ON SOLDER TAILS.
ALL PC BOARDS: HIGH TEMPERATURE PCB,TG>170°C

2. MAGNETICS
APPLICATION: 10/100 BASE-T, PoE PLUS
IMPEDANCE: 100 OHMS
TURNS RATIO (CHIP:CABLE): TX=1:1, RX=1:1
OPEN CIRCUIT INDUCTANCE (OCL):
350uH MIN @100kHz, 0.1VRMS, 8mADC BIAS FROM 0°C TO 70°C
120uH MIN @100kHz, 0.1VRMS, 19mADC BIAS FROM 0°C TO 70°C
POE CURRENT: 600mADC MAX
PERFORMANCE @ 25°C:
INSERTION LOSS (IL): 1.1dB MAX FROM 0.5MHz TO 100MHz
RETURN LOSS (RL): 18dB MIN FROM 0.5MHz TO 40MHz
12-20LOG(f/80)dB MIN FROM 40.1MHz TO 100MHz
CROSSTALK ATTENUATION: 35dB MIN FROM 0.5MHz TO 40MHz
33-20LOG(f/50)dB MIN FROM 40.1MHz TO 100MHz
COMMON MODE REJECTION RATIO (CMRR): 30dB MIN FROM 0.5MHz TO 100MHz
ISOLATION VOLTAGE: 2250 VDC (MAX) FOR 60 SECS WITH A RISE TIME OF
500V/SEC AND ALL PORTS CONNECTED.

3. PART NUMBER, DATE CODE AND COUNTRY OF ORIGIN LOCATED IN APPROXIMATE AREA SHOWN
DATE CODE: YYWW WHERE "YY" IS YEAR, "WW" IS WORK WEEK, "D" IS DAY OF WEEK,
WITH SUNDAY =1

4. TRP LOGO AND AGENCY APPROVAL LOGO ARE
LOCATED IN APPROXIMATE AREA SHOWN.

5. OPERATING TEMP: FROM 0°C TO +70°C.

6. RJ45 CAVITY CONFORMS TO FCC RULES AND REGULATION PART 68 SUBPART F.


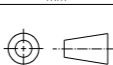
7. INDICATED MAGNETIC CONNECTIONS ARE SYMMETRICAL AND
SUPPORT AUTO-MDI/MDIX.

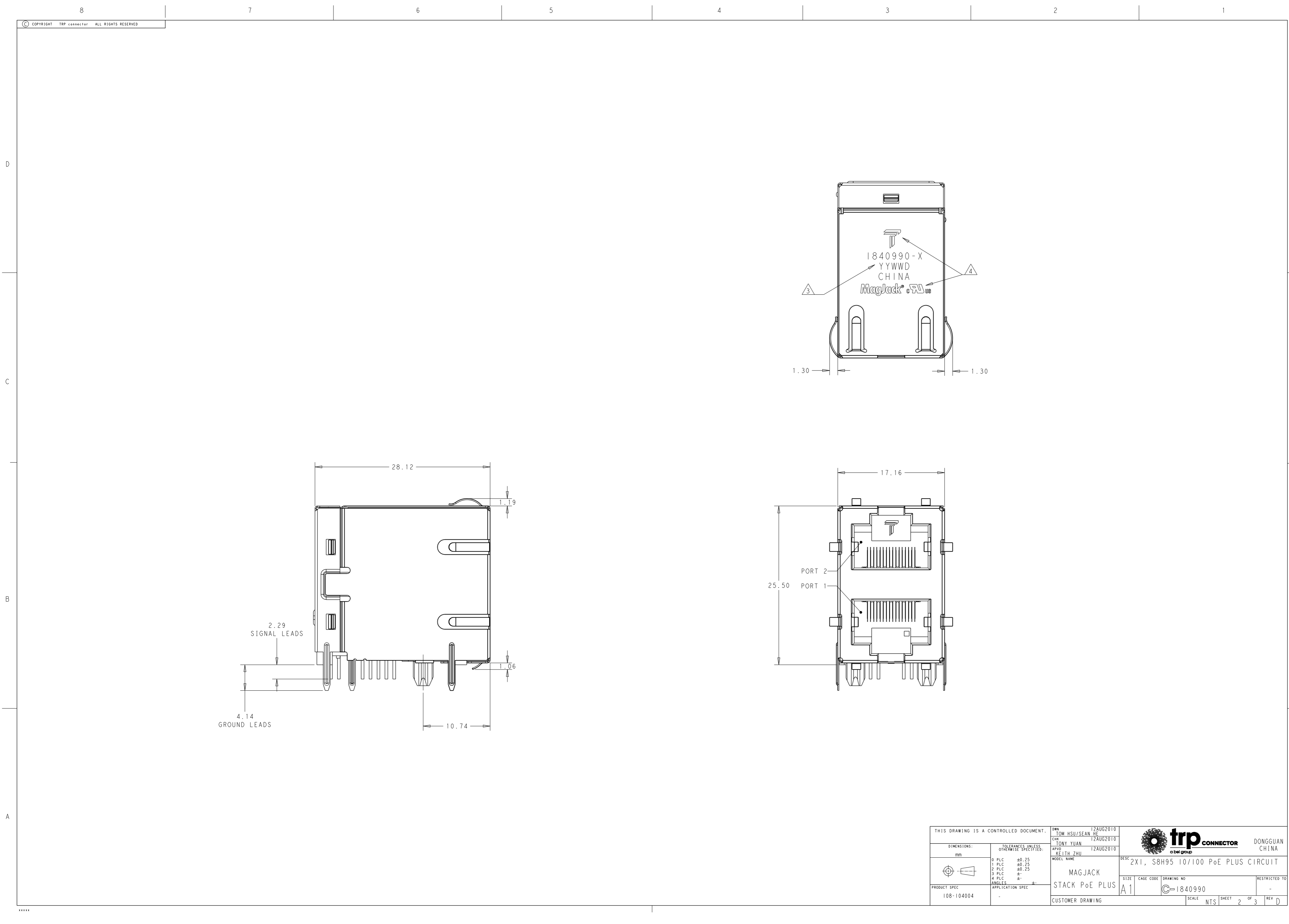
8. DATUM AND BASIC DIMENSION ESTABLISHED BY CUSTOMER.


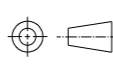
9. BASIC DIMENSION ESTABLISHED BY CUSTOMER, BUT MAY NOT BE
GREATER THAN 5.08mm.

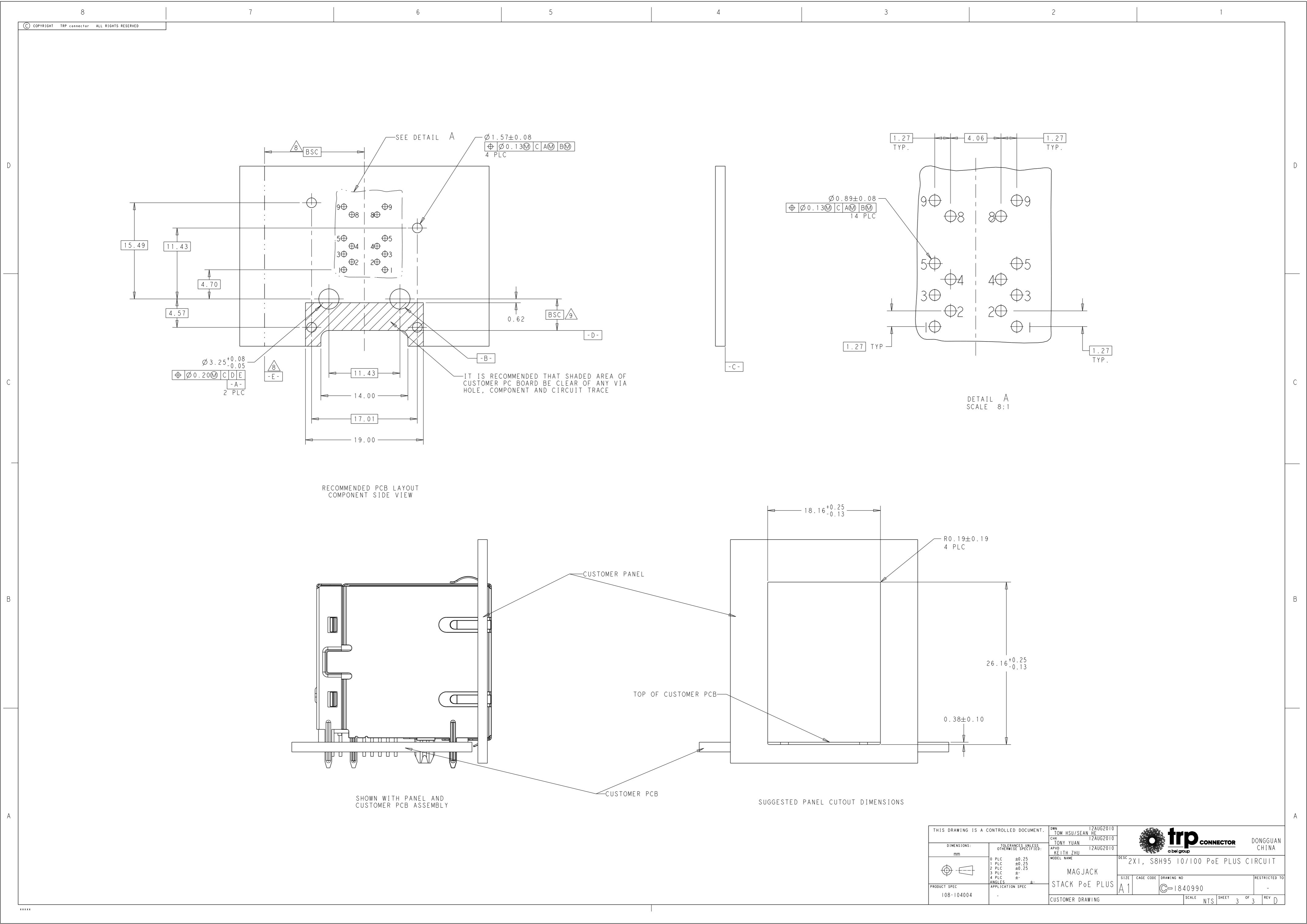
10. THE PARTS ARE RECOMMENDED FOR WAVE SOLDERING PROCESS,
PEAK TEMPERATURE 260°C MAX, 10 SECONDS MAX.

1840990-1
PART
NUMBER

THIS DRAWING IS A CONTROLLED DOCUMENT.		OWN TOM HSU/SEAN HE	12AUG2010	 trp CONNECTOR a bel group		DONGGUAN CHINA	
DIMENSIONS: mm		CHK TONY YUAN	12AUG2010				
TOLERANCES UNLESS OTHERWISE SPECIFIED:		APVD KEITH ZHU	12AUG2010				
		0 PLC ±0.25 1 PLC ±0.25 2 PLC ±0.25 3 PLC ± 4 PLC ± ANGLES ±		MODEL NAME MAGJACK		DESC 2X1, S8H95 10/100 PoE PLUS CIRCUIT	
PRODUCT SPEC 108-104004		APPLICATION SPEC -		SIZE A1		CAGE CODE 1840990	
CUSTOMER DRAWING		SCALE NTS		SHEET 1 OF 3		REV D	



THIS DRAWING IS A CONTROLLED DOCUMENT.				DWN: TOM HSU/SEAN HS 12AUG2010		 trp CONNECTOR a bel group		DONGGUAN CHINA	
DIMENSIONS:				CHK: TONY YUAN 12AUG2010					
mm				APPRO: KEITH ZHU 12AUG2010					
		TOLERANCES UNLESS OTHERWISE SPECIFIED:		MODEL NAME		DESC: 2X1, S8H95 10/100 PoE PLUS CIRCUIT			
PRODUCT SPEC 108-104004		0 PLC ±0.25		MAGJACK		SIZE		RESTRICTED TO	
		1 PLC ±0.25		STACK PoE PLUS		A1		-	
		2 PLC ±0.25				C=1840990			
		3 PLC ±							
		4 PLC ±							
		APPLICATION SPEC				CUSTOMER DRAWING		SCALE NTS	
								SHEET 2 of 3	
								REV D	



Mouser Electronics

Authorized Distributor

Click to View Pricing, Inventory, Delivery & Lifecycle Information:

[Bel:](#)

[1840990-1](#)