

THE INFORMATION CONTAINED HEREIN IS CONSIDERED "PROPRIETARY" TO BEL FUSE INC. AND SHALL NOT BE COPIED, REPRODUCED OR DISCLOSED WITHOUT THE WRITTEN APPROVAL OF BEL FUSE INC.

LED 1 POLARITY			LED 2 POLARITY		
PIN 17	PIN 18	COLOR	PIN 19	PIN 20	COLOR
-	+	YELLOW	+	-	ORANGE
			-	+	GREEN

PRELIMINARY

RoHS



# ELECTRICAL CHARACTERISTICS @ 25°C

## URNS RATIO

TP1	1CT : 1CT ±2%
TP2	1CT : 1CT ±2%
TP3	1CT : 1CT ±2%
TP4	1CT : 1CT ±2%

## CL @ 100kHz/100mVRMS (4CHANNEL)

(-40°C - 85°C)	180μH MIN.
19mA DC BIAS(-40°C - 85°C)	120μH MIN.

## RET. LOSS (MIN)

1MHz-40MHz	-18 dB MIN
40MHz-250MHz	-18+10LOG10(f/40MHz) dB MIN

## CM TO CM REJ

100kHz - 100MHz	-30 dB MIN
-----------------	------------

## CM TO DM REJ

100kHz - 100MHz	-35 dB MIN
-----------------	------------

## HIPOT (Isolation Voltage):

2250 VDC
100% OF PRODUCTION TESTED TO COMPLY
WITH IEEE 802.3 ISOLATION REQUIREMENTS

## BALANCED DC LINE CURRENT

600mA MAX. CONTINUOUS
1.2A MAX. FOR 200 MILLISECONDS

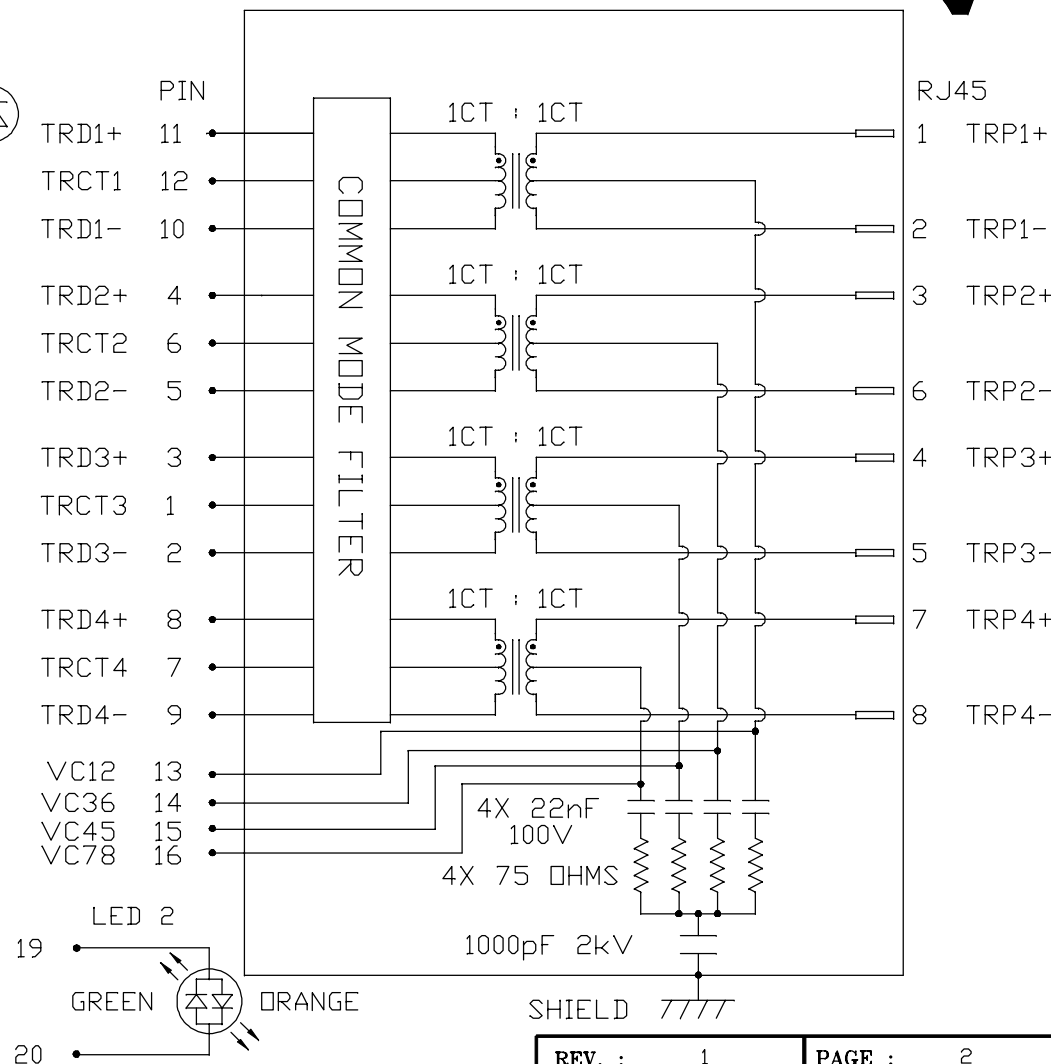
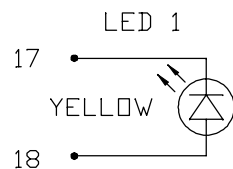
## OPERATING TEMPERATURE: -40°C TO 85°C

### LED 1

VF (FORWARD VOLTAGE)	IF=20mA	YELLOW	2.1V TYP.
λD (DOMINANT WAVELENGTH)	IF=20mA	YELLOW	590nm TYP.

### LED 2

VF (FORWARD VOLTAGE)	IF=20mA	GREEN	2.2V TYP.
		ORANGE	2.0V TYP.
λD (DOMINANT WAVELENGTH)	IF=20mA	GREEN	570nm TYP.
		ORANGE	605nm TYP.



ORIGINATED BY  
CHOW WANGCHUNG  
DATE 2021-05-27

DRAWN BY  
TANG YUAN  
DATE 2021-05-27

TITLE  
5 Gigabit MagJack®  
(4PPoE, Extended Temperature)  
PATENTED

PART NO. / DRAWING NO.  
0826-1X1T-JKB-F  
FILE NAME  
0826-1X1T-JKB-F\_1.DWG

STANDARD DIM.  
TOL. IN INCH  
[ ] METRIC DIM.  
AS REF.  
UNIT : INCH [mm]  
SCALE : N/A  
SIZE : A4

REV. : 1 PAGE : 2

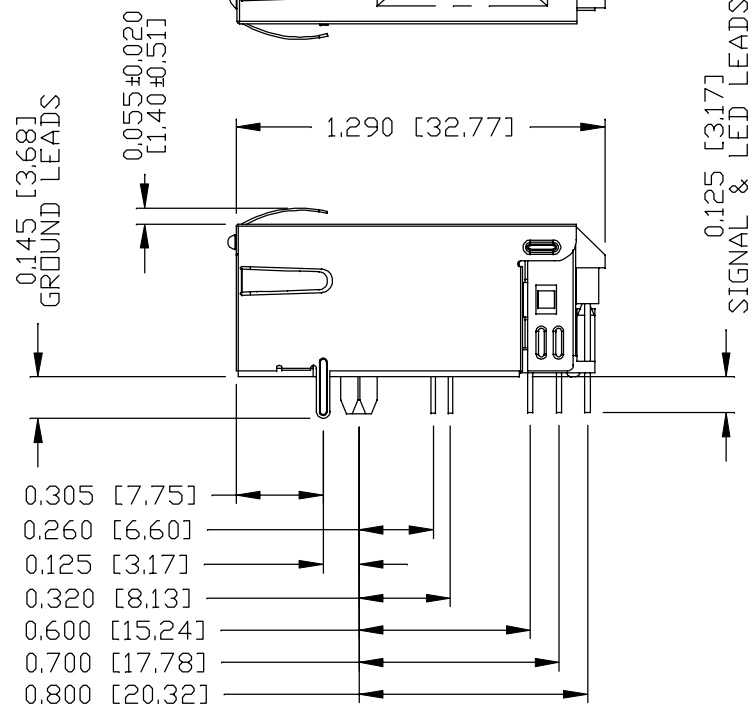
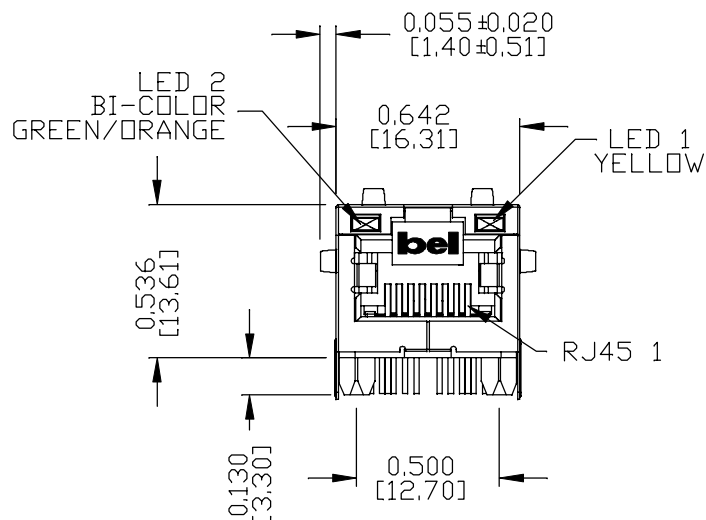


THE INFORMATION CONTAINED HEREIN IS CONSIDERED "PROPRIETARY" TO BEL FUSE INC. AND SHALL NOT BE COPIED, REPRODUCED OR DISCLOSED WITHOUT THE WRITTEN APPROVAL OF BEL FUSE INC.

PRELIMINARY

# MECHANICAL SPECIFICATION

RoHS



## NOTES:

- PLASTIC HOUSING: THERMOPLASTIC PA, BLACK.  
FLAMMABILITY RATING UL 94V-0
- CONTACTS: 50 MICRO-INCH HARD GOLD PLATING OR EQUIVALENT.
- OUTPUT PINS: TIN-COATED COPPER WIRE, DIA 0.018 INCH.  
100 MICRO-INCH MIN MATTE TIN. PINS ARE SOLDER DIPPED.
- METAL SHIELD: NICKEL PLATED ON COPPER ALLOY.  
(ALL GROUND LEADS ARE SOLDER DIPPED)

1. MARK PART WITH MFG LOGO, MFG NAME, PART NUMBER, DATE CODE AND PATENTED.
2. THE PRODUCT IS RoHS COMPLIANT.

3. JACK CAVITY CONFORMS TO FCC RULES AND REGULATIONS.
4. THE PRODUCT IS PATENTED, THE PATENT NUMBER IS U.S. PAT. 7,123,117.
5. THE PART IS RECOMMENDED FOR WAVE SOLDERING. THE SUGGESTED PEAK WAVE SOLDERING CONDITION IS 260°C MAX. AND 10 SECONDS MAX..

**cULus** UL RECOGNIZED - FILE #E196366 AND E169987.

ORIGINATED BY  
LI QUANKUN  
DATE 2021-05-27

DRAWN BY  
OLIVER ZHANG  
DATE 2021-05-27

TITLE  
5 Gigabit MagJack®  
(4PPoE, Extended Temperature)  
PATENTED

PART NO. / DRAWING NO.  
0826-1X1T-JKB-F  
FILE NAME  
0826-1X1T-JKB-F\_1.DWG

STANDARD DIM. TOL. IN INCH		[ ] METRIC DIM. AS REF.	
.X		UNIT : INCH [mm]	
.XX		SCALE : N/A	
.XXX	±0.010	SIZE : A4	

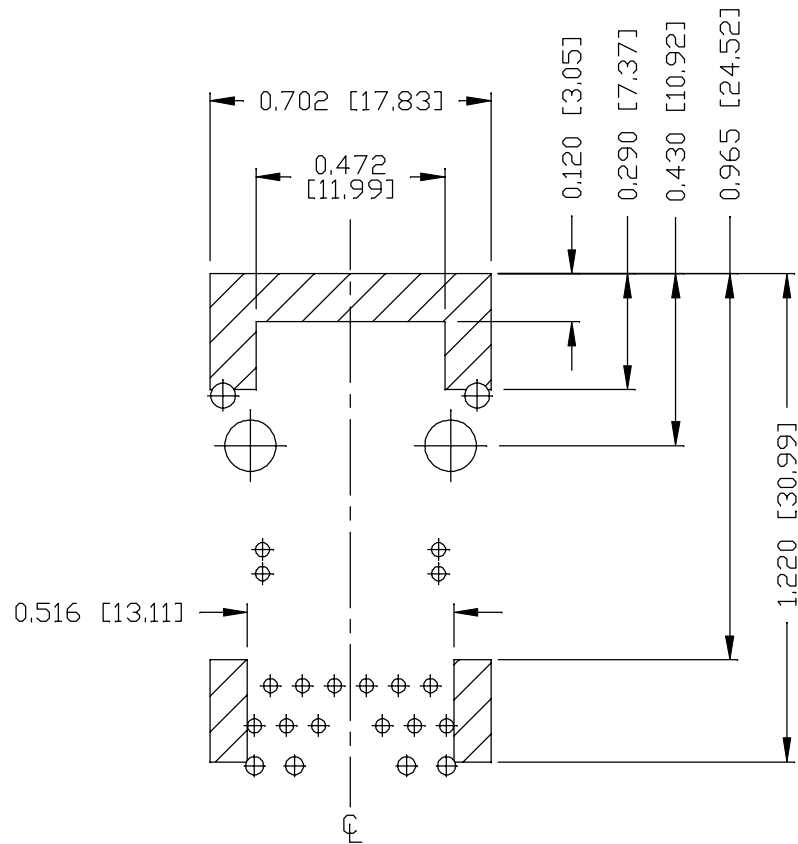
REV. : 1 PAGE : 3



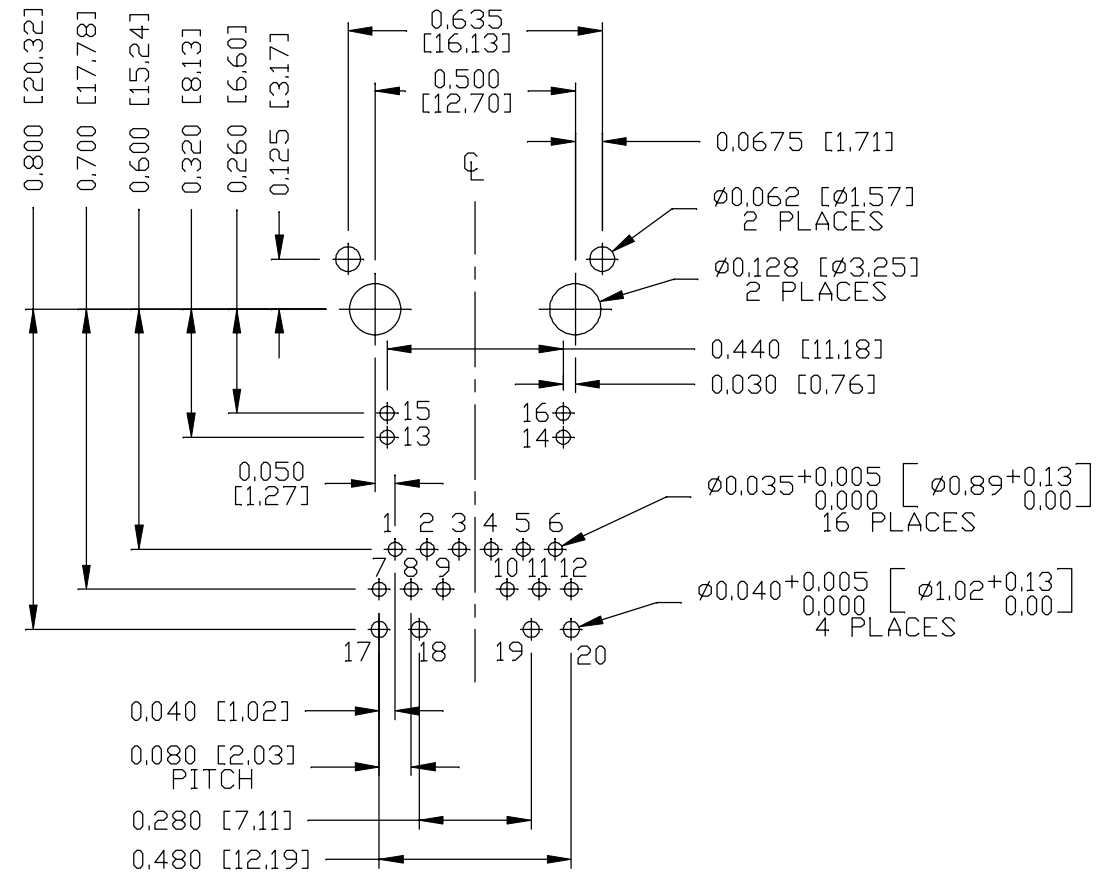
THE INFORMATION CONTAINED HEREIN IS CONSIDERED "PROPRIETARY" TO BEL FUSE INC. AND SHALL NOT BE COPIED, REPRODUCED OR DISCLOSED WITHOUT THE WRITTEN APPROVAL OF BEL FUSE INC.

PRELIMINARY

RoHS



# RECOMMENDED PCB FOOTPRINT COMPONENT SIDE VIEW



## NOTES

THE SHADED AREA ON THE CUSTOMER BOARD ARE RECOMMENDED TO BE CLEAR OFF ANY VIA HOLE OR COMPONENT PAD.

ORIGINATED BY  
LI QUANKUN  
DATE 2021-05-27

DRAWN BY  
OLIVER ZHANG  
DATE 2021-05-27

TITLE  
5 Gigabit MagJack<sup>®</sup>  
(4PPoE, Extended Temperature)  
PATENTED

PART NO. / DRAWING NO.  
0826-1X1T-JKB-F

FILE NAME  
0826-1X1T-JKB-F\_1.DWG

STANDARD DIM. TOL. IN INCH		[ ] METRIC DIM. AS REF.
.X		UNIT : INCH [mm]
.XX		SCALE : N/A
.XXX	±0.004	SIZE : A4

REV. : 1	PAGE : 4
----------	----------

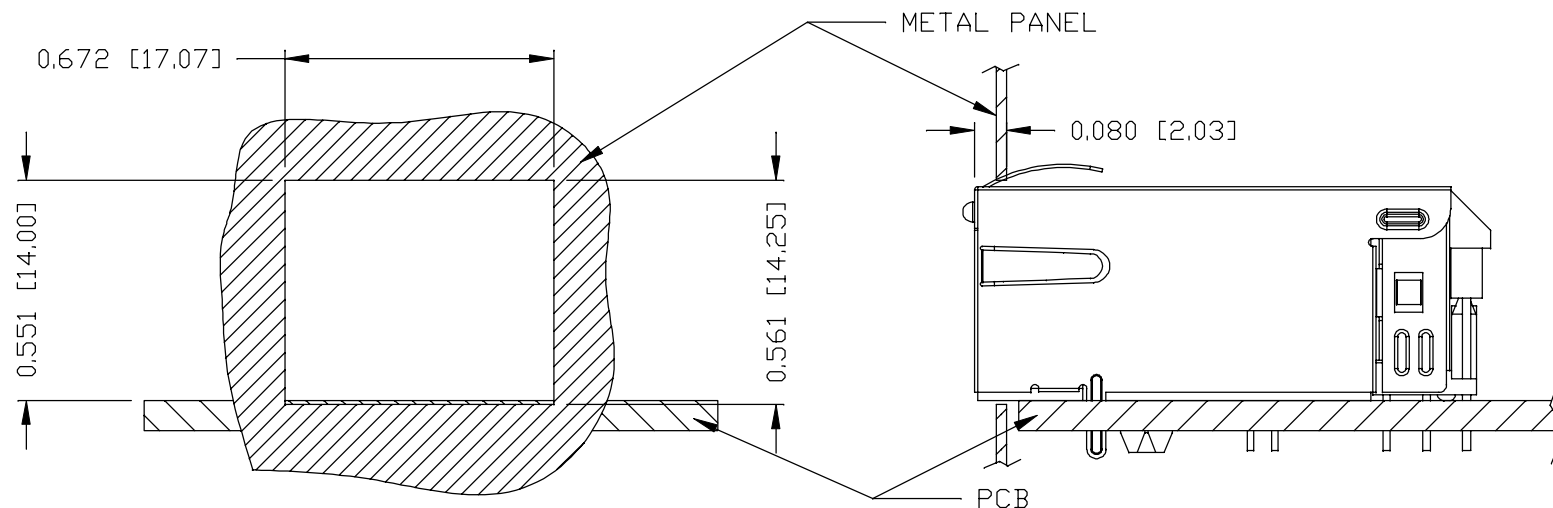

**bel** MAGNETIC SOLUTIONS  
a bel group

THE INFORMATION CONTAINED HEREIN IS CONSIDERED "PROPRIETARY" TO BEL FUSE INC. AND SHALL NOT BE COPIED, REPRODUCED OR DISCLOSED WITHOUT THE WRITTEN APPROVAL OF BEL FUSE INC.

PRELIMINARY



SUGGESTED PANEL OPENING



NOTE:

THE DISTANCE OF PANEL INSIDE SURFACE RELATIVE TO FRONT SURFACE OF PART IS ONLY A SUGGESTION. IN CASE THIS DISTANCE IS DIFFERENT, THE REQUIRED PANEL OPENING DIMENSIONS CHANGE ACCORDINGLY.

PACKING INFORMATION

PACKING TRAY : 0200-9999-F6 (TOP)  
0200-9999-F7 (BOTTOM)

PACKING QUANTITY : 40 PCS FINISHED GOODS PER TRAY  
10 TRAYS (400 PCS FINISHED GOODS) PER CARTON BOX

NOTE : CARDBOARDS ARE PLACED BETWEEN LAYERS OF PACKING TRAY INSIDE CARTON BOX  
(INCLUDE THE UPPERMOST AND LOWERMOST TRAY)

<b>ORIGINATED BY</b> LI QUANKUN <b>DATE</b> 2021-05-27		<b>TITLE</b> 5 Gigabit MagJack <sup>®</sup> (4PPoE, Extended Temperature) PATENTED		<b>PART NO. / DRAWING NO.</b> 0826-1X1T-JKB-F <b>FILE NAME</b> 0826-1X1T-JKB-F_1.DWG		<b>STANDARD DIM. TOL. IN INCH</b> .X .XX .XXX	<b>[ ] METRIC DIM. AS REF.</b> UNIT : INCH [mm] SCALE : N/A	<b>REV. :</b> 1 <b>PAGE :</b> 5
<b>DRAWN BY</b> OLIVER ZHANG <b>DATE</b> 2021-05-27						±0.005 	<b>SIZE : A4</b>	<b>MAGNETIC SOLUTIONS</b> a bel group

# Mouser Electronics

Authorized Distributor

Click to View Pricing, Inventory, Delivery & Lifecycle Information:

Bel:

[0826-1X1T-JKB-F](#)