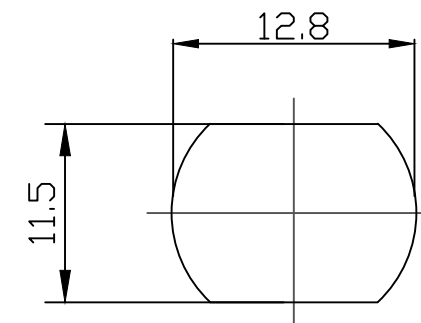
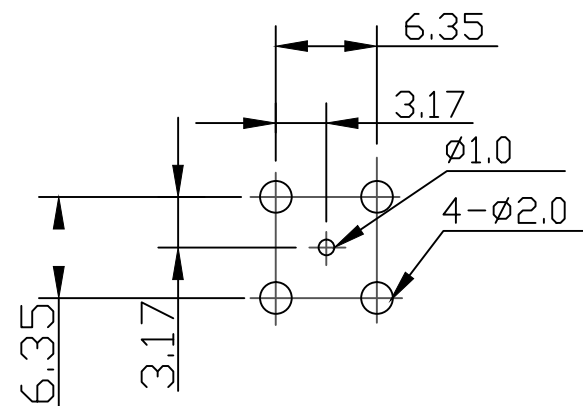
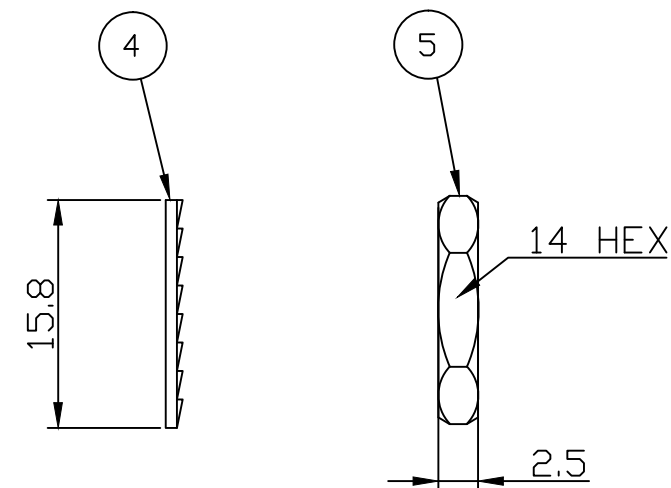
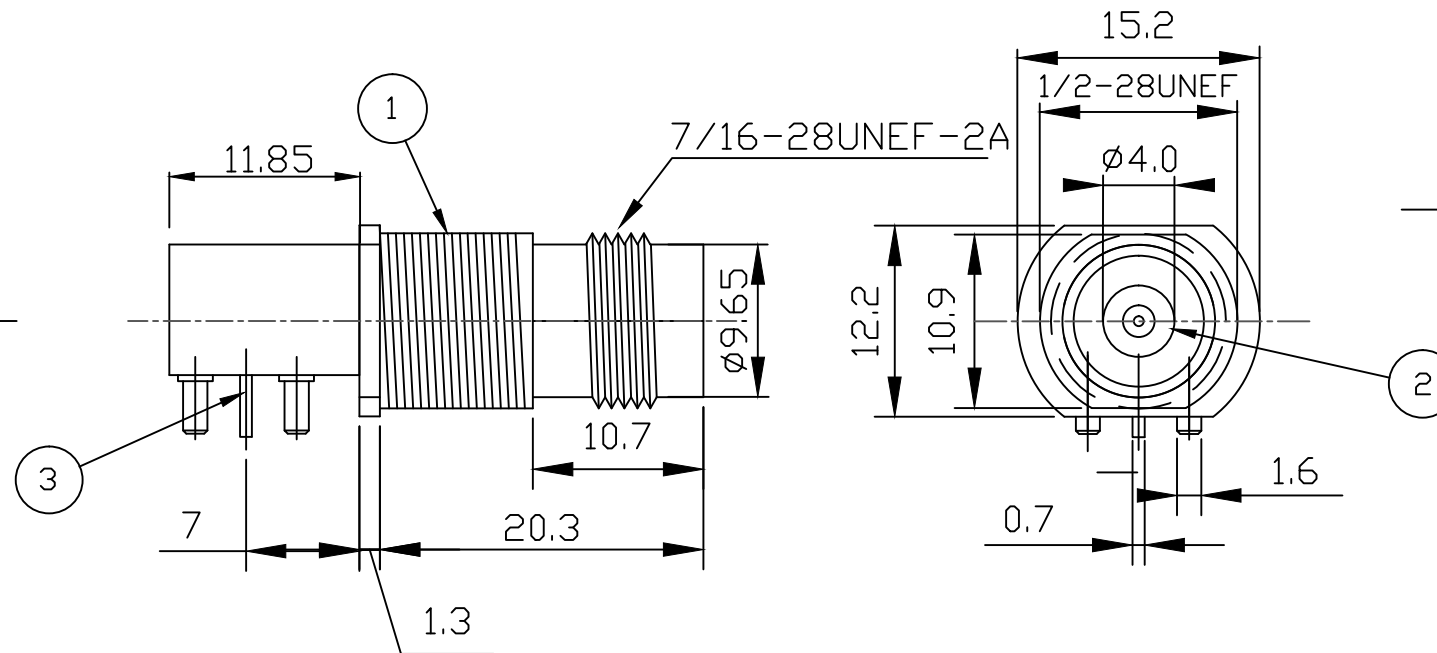


Technical drawing of a mechanical part showing a cross-section. The drawing includes the following dimensions:

- A vertical dimension of 4 on the left side.
- A vertical dimension of 3.2 on the left side, below the 4.
- A horizontal dimension of $\varnothing 9.7$ at the top, indicating the diameter of the circular feature.



Nominal Impedance:	50 ohms
Frequency Range:	DC to 11 GHz
Operating Voltage (rms):	500 V maximum at sea level
Dielectric Withstand Voltage (rms):	1000 V maximum at sea level
Contact Resistance:	3.0 milliohms maximum
Insulation Resistance:	5000 megohms minimum
Current Rating:	3 Amps maximum

Mating Cycles:	100 cycles minimum
Interface Dimensions:	Conform to MIL-C-39012
Panel Thickness:	Max 5mm

Temperature Range: -55 °C to +85 °C

	DESCRIPTION	MATERIAL	PLATING
1	Shell	Zinc alloy	Nickel
2	Insulator	Polypropylene	Natural
3	Socket contact	Phosphor Bronze	Gold
4	Lock Washer	Steel	Nickel
5	Hex Nut	Brass	Nickel

Material / Dimension Update - ECN D17509	MS	5	15 Oct 21
Material Name Update	MS	4	25 April 19
Dimension Update	JC	3	2 Sept 14
CAD Issue	SN	2	9 Jan 03
First Issue	AT	1	29 Nov 96
DESCRIPTION OF REVISION	APPVD	ISS	DATE



PAGE: 1 of 1

Mouser Electronics

Authorized Distributor

Click to View Pricing, Inventory, Delivery & Lifecycle Information:

[Cinch Connectivity Solutions:](#)

[VTM511](#)