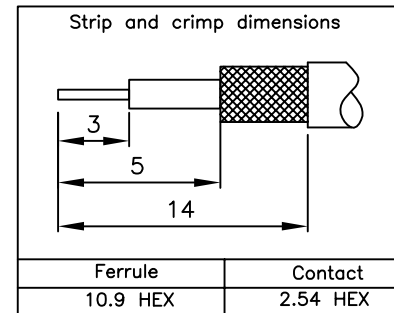
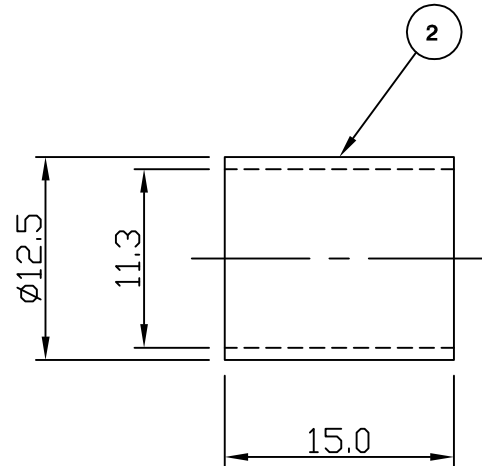
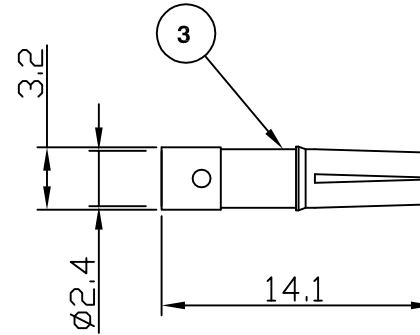
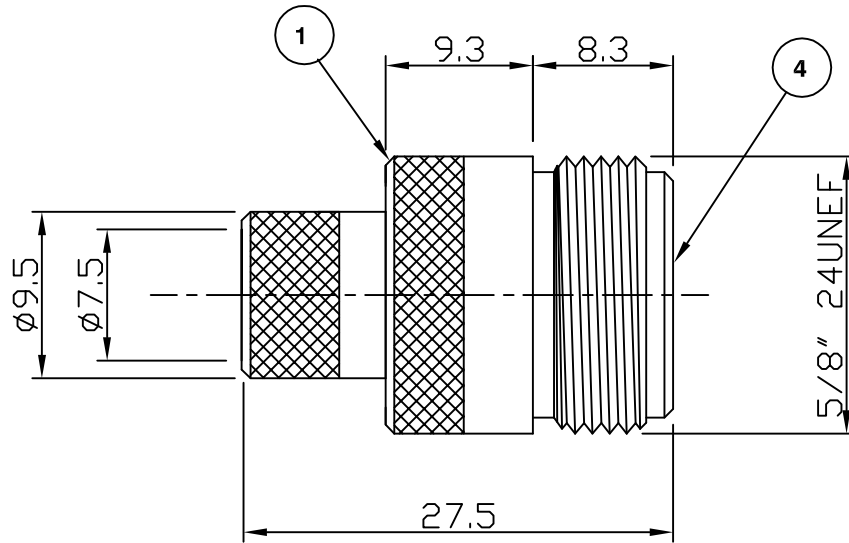


RoHS COMPLIANT



For stripping and assembly instructions see Drawing Number: VAIN3101

Electrical Characteristics

| | |
|-------------------------------------|-----------------------------|
| Nominal Impedance: | 50 ohms |
| Frequency Range: | DC to 11 GHz |
| VSWR: | 1.3:1 maximum |
| Insertion Loss: | 0.3 dB at 10 GHz |
| Operating Voltage (rms): | 1000 V maximum at sea level |
| Dielectric Withstand Voltage (rms): | 2500 V maximum at sea level |
| Contact Resistance: | 1.0 milliohms maximum |
| Insulation Resistance: | 5000 megohms minimum |

Mechanical Characteristics

| | |
|-----------------------|------------------------|
| Mating Cycles: | 500 cycles minimum |
| Interface Dimensions: | Conform to MIL-C-39012 |

Environmental Characteristics

| | |
|--------------------|-------------------|
| Temperature Range: | -65 °C to +165 °C |
|--------------------|-------------------|

| | PART | DESCRIPTION |
|---|------------|--|
| 1 | Body | Brass, nickel plated 2.54 µm |
| 2 | Ferrule | Brass, nickel plated 2.54 µm |
| 3 | Contact | Brass, gold plated 0.076 µm - 0.127 µm |
| 4 | Dielectric | PTFE |

| | | | |
|--------------------------------|-------|-----|-------------|
| Contact & Body outline changed | MS | 4 | 21 Jan 13 |
| Changed Supplier | KA | 3 | 03 Aug 07 |
| Up Issue | SN | 2 | 28 March 02 |
| First Issue | SN | 1 | 14 Aug 01 |
| DESCRIPTION OF REVISION | APPVD | ISS | DATE |



Cinch Connectivity Solutions
7-13 Russel Way,
Widford Industrial Estate,
Chelmsford, Essex,
CM1 3AA, UK.
Tel: +44 (0) 1245 359515
Fax: +44 (0) 1245 358938

SCALE: Not To Scale

DIMENSIONS: mm

TOLERANCES:
± 0.2mm unless
otherwise stated

DRAWN BY:

S Nash

CHECKED BY:

S Nash

APPROVED BY:

G Dalton

DATE:

28 March 02

TITLE:

N Crimp Jack for RG213

PART NUMBER:

VN30-2020

PAGE: 1 of 1

Mouser Electronics

Authorized Distributor

Click to View Pricing, Inventory, Delivery & Lifecycle Information:

[Cinch Connectivity Solutions:](#)

[VN30-2020](#)