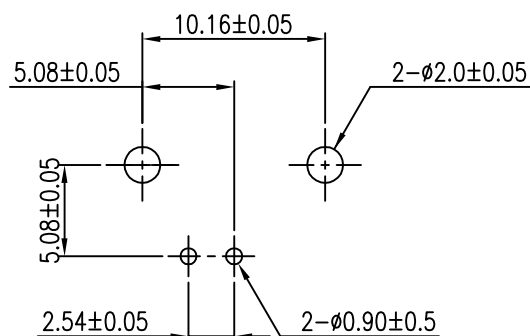
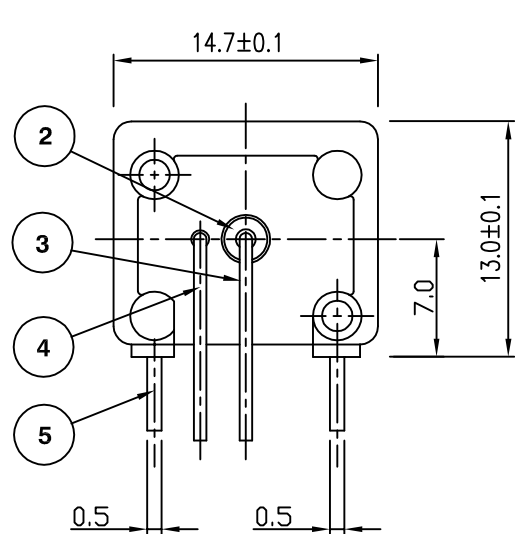
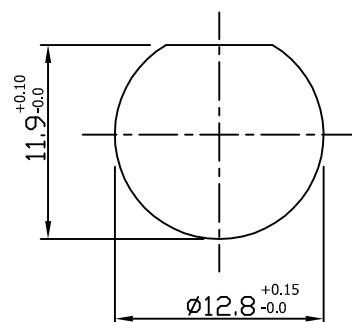
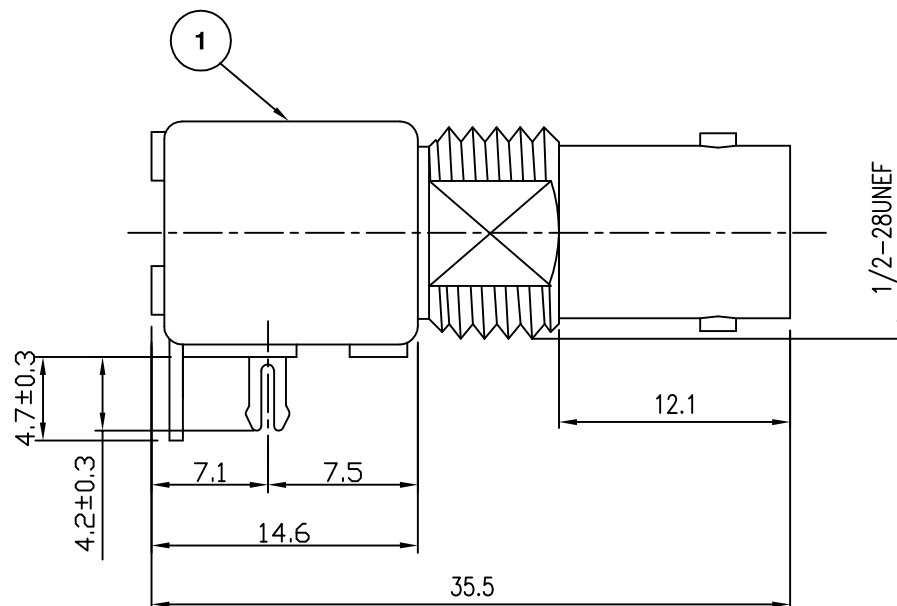


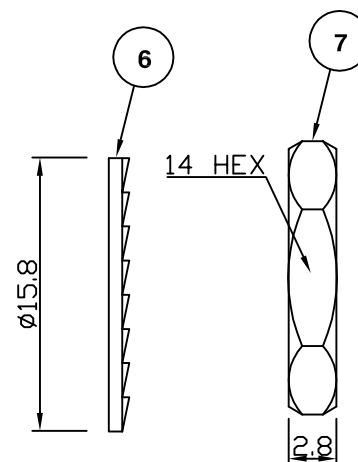
RoHS COMPLIANT



Recommended PCB Layout



Panel Cutout



### Electrical Characteristics

Nominal Impedance:	50 ohms
Frequency Range:	DC to 4 GHz
VSWR:	1.3:1 maximum
Insertion Loss:	0.2 dB at 3 GHz
Operating Voltage (rms):	500 V maximum at sea level
Dielectric Withstand Voltage (rms):	1500 V maximum at sea level
Contact Resistance:	3.0 milliohms maximum
Insulation Resistance:	5000 megohms minimum

### Mechanical Characteristics

Mating Cycles:	500 cycles minimum
Interface Dimensions:	Conform to MIL-C-39012

### Environmental Characteristics

Temperature Range:	-55 °C to +85 °C
--------------------	------------------

	PART	DESCRIPTION
1	Body	Zinc Alloy, nickel plated
2	Dielectric	Polypropylene, UL94V-0
3	Contact	Phosphor Bronze, gold plated
4	Ground Contact	Copper Clad Steel, tin plated
5	Mounting Lock	Phosphor Bronze, tin plated to >5 microns
6	Lock Washer	Brass, nickel plated
7	Nut	Brass, nickel plated

Dimensions added	JT	4	15 June 10
Tin Plating thickness added	MS	3	05 Mar 08
CAD Issue	SN	2	07 Feb 02
First Issue	CBB	1	25 Jan 96
DESCRIPTION OF REVISION	APPVD	ISS	DATE



Cinch Connectivity Solutions  
7-13 Russel Way,  
Widford Industrial Estate,  
Chelmsford, Essex,  
CM1 3AA, UK.  
Tel: +44 (0) 1245 359515  
Fax: +44 (0) 1245 358938

SCALE: Not To Scale

DIMENSIONS: mm

TOLERANCES:  
± 0.2mm unless  
otherwise stated

DRAWN BY:

S Nash

CHECKED BY:

S Nash

APPROVED BY:

M Nielsen

DATE:

07 Feb 02

TITLE:

Low Profile BNC Shielded  
Right Angle PCB Mount Jack

PART NUMBER:

**VBM211C**

PAGE: 1 of 1

# Mouser Electronics

Authorized Distributor

Click to View Pricing, Inventory, Delivery & Lifecycle Information:

[Cinch Connectivity Solutions:](#)

[VBM211C](#)