

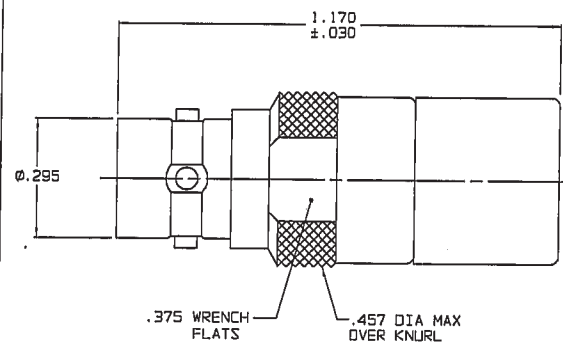
DASH NO	TABLE 1
-1	TERM (NO CHAIN)
-2	TERM WITH 2.5 BRASS CHAIN
-3	TERM WITH 2.5 NYLON CHAIN
-4	TERM WITH 3.0 BRASS CHAIN
-5	TERM WITH 3.0 NYLON CHAIN
-6	TERM WITH 6.0 BRASS CHAIN
-7	TERM WITH 6.0 NYLON CHAIN
-8	TERM WITH 4.0 BRASS CHAIN
-9	TERM WITH 4.0 NYLON CHAIN
-10	TERM WITH 10.0 BRASS CHAIN
-11	TERM WITH 10.0 NYLON CHAIN
-12	TERM WITH 2.5 SST ROPE
-13	TERM WITH 3.0 SST ROPE
-14	TERM WITH 6.0 SST ROPE
-15	TERM WITH 4.0 SST ROPE
-16	TERM WITH 7.0 SST ROPE
-17	TERM WITH 4.5 SST ROPE

DASH NO	"A" DIA	"B" DIA	"C" DIM	"D" DIM
-D1	0.755	0.875	1.191	0.513
-D2	0.630	0.750	1.066	0.450
-D3	0.505	0.625	0.941	0.388
-D4	0.439	0.562	0.878	0.356
-D5	0.380	0.500	0.816	0.325
-D6	0.317	0.437	0.753	0.294
-D7	0.281	0.406	0.722	0.278
-D8	0.610	0.750	1.066	0.450
-DD8	0.330	0.450	0.766	0.300
-D9	0.567	0.687	1.003	0.419
-D10	0.192	0.312	0.628	0.231
-D11	1.005	1.125	1.441	0.638

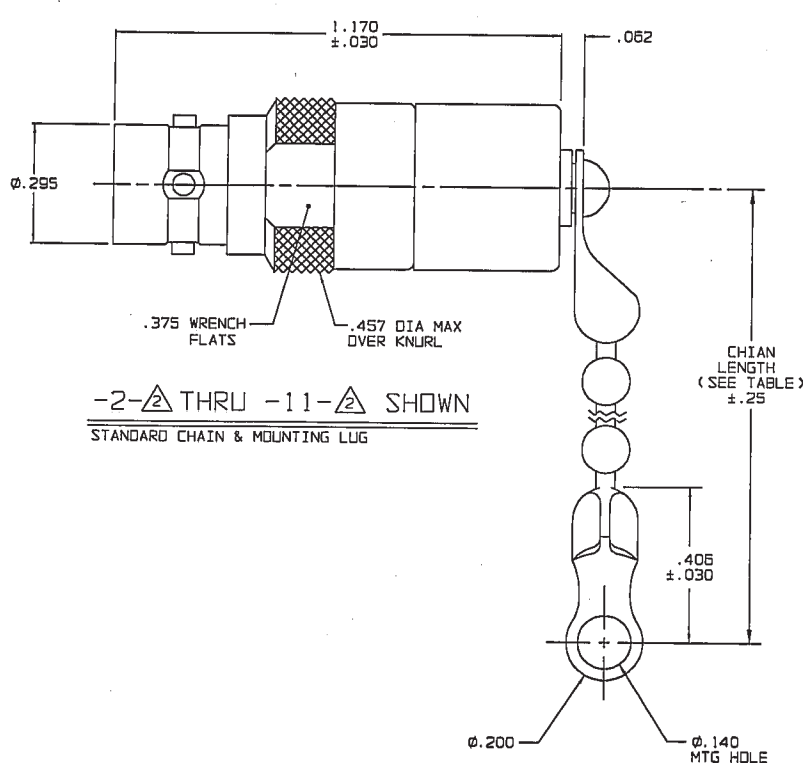
RED INDICATES ORIGINAL

DATA CONTAINED IN THIS DOCUMENT IS PROPRIETARY TO TROMPETER ELECTRONICS INC. AND SHALL NOT BE DISCLOSED, COPIED OR USED FOR PROCUREMENT OR MANUFACTURE WITHOUT EXPRESS WRITTEN PERMISSION OF TROMPETER ELECTRONICS INC.

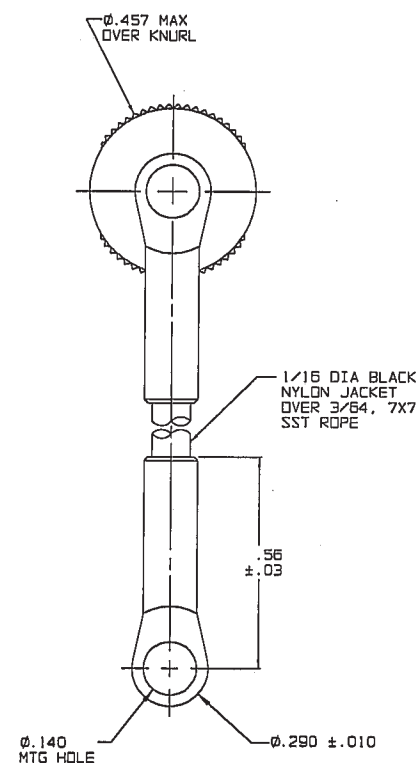
REVISIONS		3-0240	SH 1
REV	DESCRIPTION	DATE	APPROVED
E	REVISED PER ECO 14546	5-21-02	mm



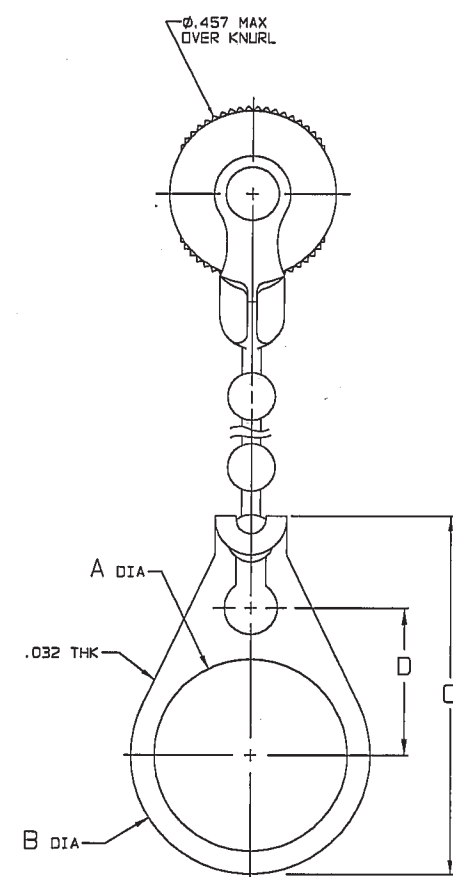
-1-△ SHOWN
NO CHAIN/ROPE OR MOUNTING LUG



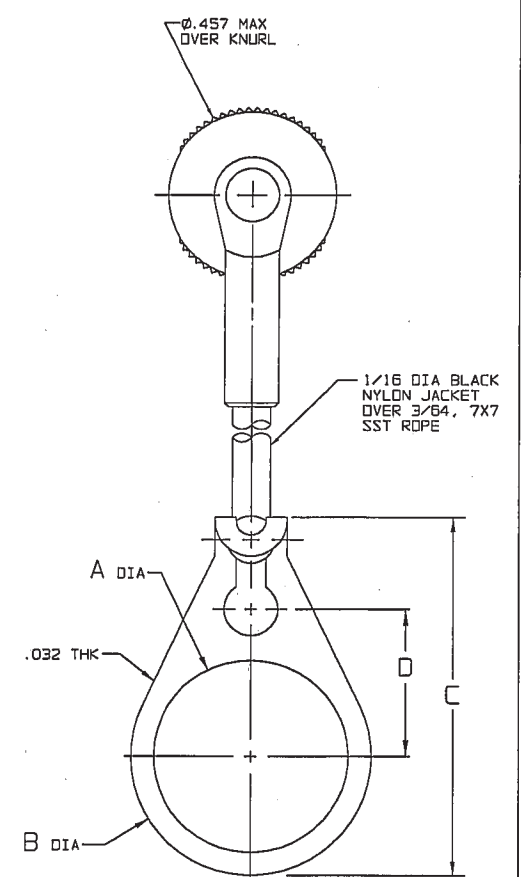
-2-△ THRU -11-△ SHOWN
STANDARD CHAIN & MOUNTING LUG



-12-△ THRU
-17-△ SHOWN
STAINLESS STEEL ROPE AND MOUNTING LUG



-2-△-D1 THRU
-11-△-D11 SHOWN
STANDARD CHAIN AND MOUNTING LUG



-12-△-D1 THRU
-17-△-D11 SHOWN
SST ROPE AND MOUNTING LUG

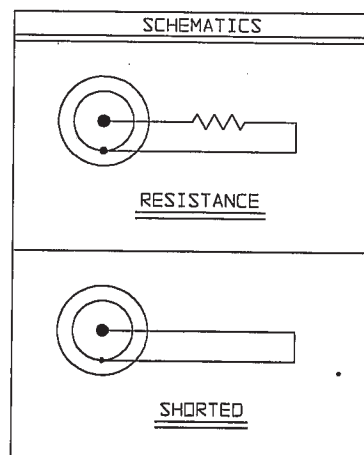
4. EXAMPLE OF COMPLETE MODEL NO:


TNGMFFL1-3-2-02
BASIC MODEL NO | MOUNTING LUG (OPTIONAL SEE TABLE 2)
CHAIN/ROPE MATL AND LENGTH (SEE TABLE 1)

3. SUBMINIATURE 4-LUG CONCENTRIC TWINAX/TRIAX TERMINATION JACK WITH OR WITHOUT CHAIN/ROPE AND MTG LUG OPTION

△ STANDARD RESISTANCE VALUE IN OHMS 1/8W, 1%
"S" = CONTACT SHORTED TO INNER SHIELD (NO RESISTOR)
"O" = LOOSELY ASSEMBLED (NO RESISTOR)

1. FINISH: TFS-1A (NICKEL)



INTERPRET DRAWING PER MIL-STD-100 DIMENSIONS ARE IN INCHES AND INCLUDE FINISH THICKNESS UNLESS OTHERWISE SPECIFIED		TOL: UNLESS SPECIFIED . XX . XXX . XXXX ANGLES		 TROMPETER RF connectivity <small>a cinch connectivity solutions brand</small>	
DRAWN AAH	DATE 5-17-02	MATERIAL:		TITLE: TNGMFFL1	
CHECKED JLM	5-20-02	FINISH:		SIZE	
QUALITY JLM	5-21-02			CAGE CODE	
MANUAL KMA	5-21-02	DRAWING NO.		REV.	
APPROVED KMA	5-20-02	B 14949		3-0240 E	
CAD FILE NO. 3-0240E1	DO NOT SCALE DWG		SCALE 3/1	DATE: 2/18/85	SHEET 1C

Mouser Electronics

Authorized Distributor

Click to View Pricing, Inventory, Delivery & Lifecycle Information:

[Cinch Connectivity Solutions:](#)

[TNGMFFL1-6-78](#)