

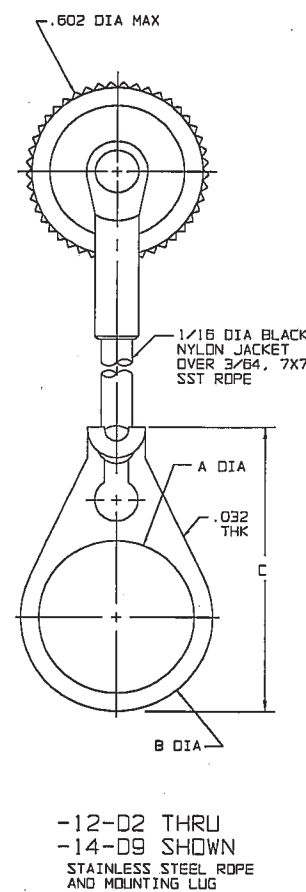
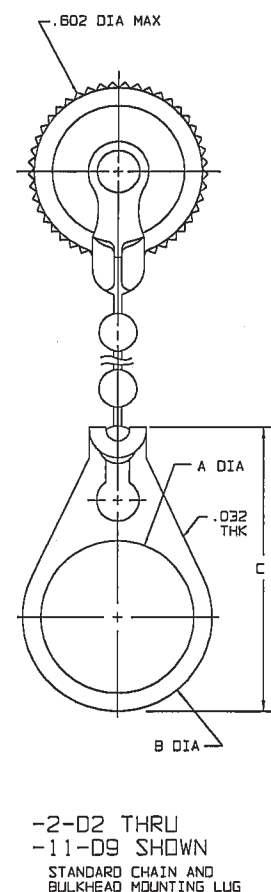
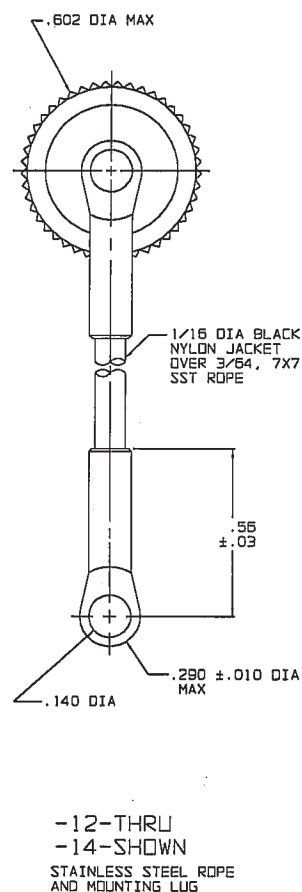
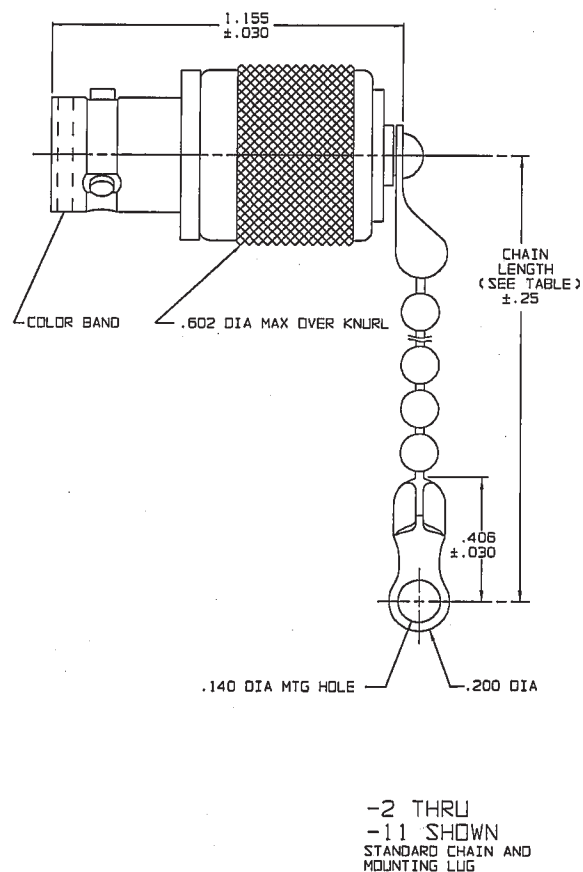
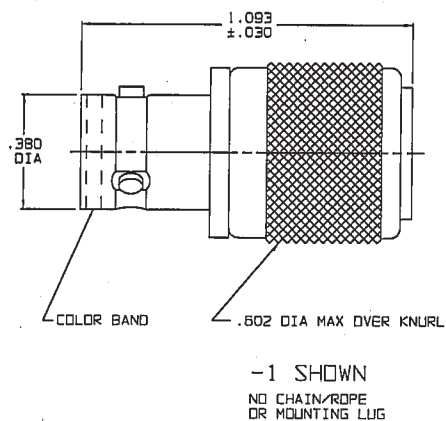
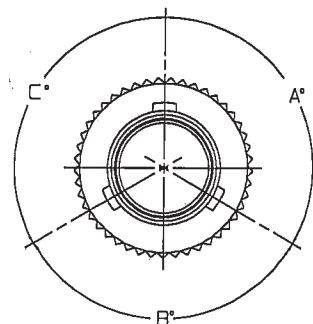
TABLE 1	
DASH NO	DESCRIPTION
-1	CAP (NO CHAIN)
-2	CAP WITH 2.5 BRASS CHAIN
-3	CAP WITH 2.5 NYLON CHAIN
-4	CAP WITH 3.0 BRASS CHAIN
-5	CAP WITH 3.0 NYLON CHAIN
-6	CAP WITH 5.0 BRASS CHAIN
-7	CAP WITH 5.0 NYLON CHAIN
-8	CAP WITH 4.0 BRASS CHAIN
-9	CAP WITH 4.0 NYLON CHAIN
-10	CAP WITH 10.0 BRASS CHAIN
-11	CAP WITH 10.0 NYLON CHAIN
-12	CAP WITH 2.5 JACKETED STAINLESS STEEL ROPE
-13	CAP WITH 3.0 JACKETED STAINLESS STEEL ROPE
-14	CAP WITH 5.0 JACKETED STAINLESS STEEL ROPE

TABLE 2						
MODEL NO	TYPE CONN	POLARIZATION				
		A DEGREE	B DEGREE	C DEGREE	D DEGREE	COLOR BAND
RF177	3 LUG	120°	120°	120°		
RF177FL	4 LUG	90°	90°	90°	90°	
RF177I		100°	150°	110°		RED
RF177U		120°	130°	110°		ORANGE
RF177V		115°	130°	115°		YELLOW
RF177W		125°	110°	125°		GREEN
RF177X	3 LUG	130°	100°	130°		BLUE
RF177Y		110°	140°	110°		VIOLET
RF177Z		100°	160°	100°		GRAY
RF177S		135°	135°	90°		WHITE

TABLE 3			
DASH NO	"A" DIA	"B" DIA	"C" DIM
-02	.630	.750	1.066
-03	.505	.625	.941
-04	.439	.562	.878
-05	.380	.500	.815
-06	.317	.437	.753
-07	.281	.406	.722
-08	.610	.750	1.066
-09	.567	.687	1.003

DATA CONTAINED IN THIS DOCUMENT IS PROPRIETARY TO TROMPETER ELECTRONICS INC. AND SHALL NOT BE DISCLOSED, COPIED OR USED FOR PROCUREMENT OR MANUFACTURE WITHOUT EXPRESS WRITTEN PERMISSION OF TROMPETER ELECTRONICS INC.			
REVISIONS		1-0325	SH 1
REV	DESCRIPTION	DATE	APPROVED
N	REVISED PER ECD 14475	4-12-02	WMA

RED INDICATES ORIGINAL



4. EXAMPLE OF COMPLETE MODEL NO:
 RF177 I - 3 - 02
 BASIC MODEL NO: RF177 (3-LUG) RF177FL (4-LUG)
 POLARIZATION LETTER: NONE REQUIRED FOR STANDARD POLARIZATION (SEE TABLE 2)
 BULKHEAD JACK MOUNTING LUG (OPTIONAL SEE TABLE 3)
 CHAIN/ROPE MATL & LENGTH (SEE TABLE 1)
3. 3 AND 4 LUG BNC STYLE DUST CAP WITH OR WITHOUT CHAIN OR SST ROPE AND MOUNTING LUG OPTION
2. FINISH: TFS-1A (NICKEL)
1. ALL DIMENSIONS ARE IN INCHES

INTERPRET DRAWING PER MIL-STD-100 DIMENSIONS ARE IN INCHES AND INCLUDE FINISH THICKNESS UNLESS OTHERWISE SPECIFIED		TOL: UNLESS SPECIFIED .XX .XXX ±.005 .XXXX ANGLES	
DRAWN AAH	DATE 4-12-02	MATERIAL:	TITLE: RFI77/RFI77FL
CHECKED [Signature]	4-12-02		
QUALITY [Signature]	4-12-02	FINISH:	SIZE CAGE CODE DRAWING NO. REV. B 14949 1-0325 N
MANUF [Signature]	4/12/02		
APPROVED [Signature]	4/12/02	DO NOT SCALE DWG	SCALE 2/1 DATE: 8-15-73 SHEET 1 OF 2
NEXT ASSY	CAD FILE NO: 1-0325N1		



Mouser Electronics

Authorized Distributor

Click to View Pricing, Inventory, Delivery & Lifecycle Information:

[Cinch Connectivity Solutions:](#)

[RFI77-2](#) [RFI77-8](#) [RF177-5-D3](#)