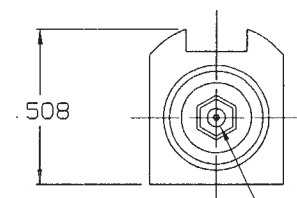
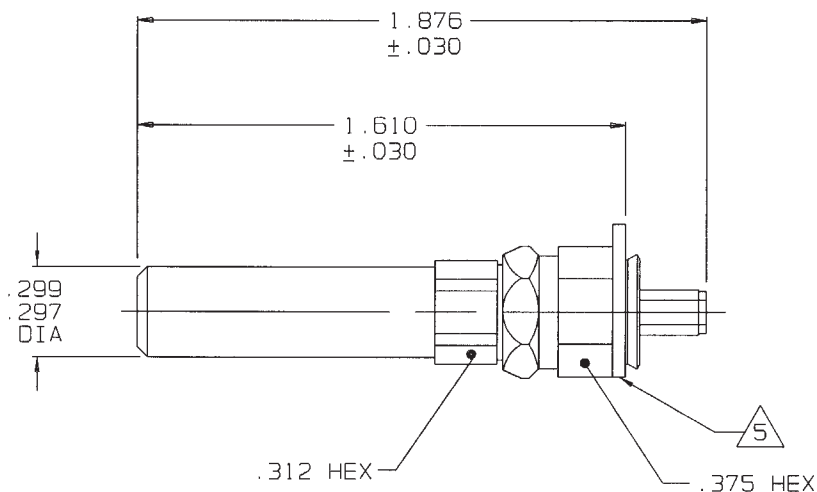


DASH NO	CABLE ACCOMMODATED	A HEX
-009	8218, BELDEN 21-597, ESSEX YR23023, BELDEN	.178
-013A	TCC-75-2 8241F, BELDEN	.255
-014	8212, BELDEN	.255
-025	734A TYPE	
-026	735A TYPE	.178
-027	KS19224L2 LUCENT	

DATA CONTAINED IN THIS DOCUMENT IS  
PROPRIETARY TO TROMPETER ELECTRONICS INC.  
AND SHALL NOT BE DISCLOSED, COPIED OR USED  
FOR PROCUREMENT OR MANUFACTURE WITHOUT  
EXPRESS WRITTEN PERMISSION OF TROMPETER  
ELECTRONICS INC.

REVISIONS		PL1MWLT	SH 1
REV	DESCRIPTION	DATE	APPROVED
A	PRODUCTION RELEASE		

**RED INDICATES ORIGINAL**



MODEL NO.	TEI P/N
PL1MWLT	1-0504

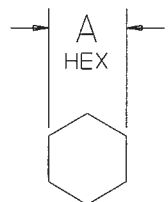
5 PLATE TO ROTATE FREELY AFTER  
WITHSTANDING AN AXIAL FORCE OF  
25 LBS IN THE DIRECTION OF THE  
CABLE ENTRY

4 ASSEMBLE IAW TAI-200 EXCEPT  
INSTALL NUT ASSY OVER CABLE  
PRIOR TO TERMINATING CONNECTOR


3 SEE TABLE FOR CABLE ACCOMMODATED

2. 75 OHM COAXIAL MINIATURE TOOL  
CRIMP PATCH PLUG, IN STANDARD  
CRIMP DESIGN, WITH ENTRY BUSHING

1. FINISH: TFS-1B (2G-GOLD)



**OUTLINE DRAWING**

INTERPRET DRAWING PER MIL-STD-100 DIMENSIONS ARE IN INCHES AND INCLUDE FINISH THICKNESS UNLESS OTHERWISE SPECIFIED		TOL: UNLESS SPECIFIED .XX ± .02 .XXX ± .010 .XXXX ANGLES		 <b>TROMPETER</b> RF connectivity <small>a cinch connectivity solutions brand</small>			
DRAWN PD	DATE 1-10-02	MATERIAL:				TITLE: 75 OHM PATCH PLUG, STANDARD CRIMP DESIGN	
CHECKED		FINISH:		SIZE	CAGE CODE	DRAWING NO.	REV.
QUALITY				A	14949	PL1MWLT	A
MANUF	1-17-02	DO NOT SCALE DWG		SCALE	DATE	SHEET	
APPROVED	1/17/02			2/1	1-17-02	1 OF 1	
CAD FILE NO.	PL1MWLT.PRT						

NEXT ASSY

# Mouser Electronics

Authorized Distributor

Click to View Pricing, Inventory, Delivery & Lifecycle Information:

[Cinch Connectivity Solutions:](#)

[PL1MWLT-026](#) [PL1MW-026](#)