

RED INDICATES ORIGINAL

DASH NO	FIG	CABLES ACCOMMODATED	A DIM	B FLATS	C HEX	D DIA MAX	ASSEMBLE PER
-1	1,3	RG-58	.997	.500	.437	.600	TAI-101
-U1		ESSEX 821-715					
-2		RG-59					
-U2							
-2A		BELDEN 8297					
-U2A							
-2B		W.E.CO. 730A					
-U2B							
-3		RG-223					
-U3							
-3A		RG-55					
-U3A							
-4		RG-122					
-U4	1,3	BELDEN 8218	1.030	.562	.500	.655	TAI-101
-5		RG-174					
-U5		RG-187					
-5A							
-U5A		RG-196					
-5B		HEWLETT-PACKARD 8120-1107					
-U5B							
-6		BELDEN 9231					
-U6							
-6E		RG-5					
-U6E		RG-6					
-21		RG-303					
-U21							
-22		RG-180					
-U22							
-31	1,3	GRUMMAN GC8756P1	.997	.500	.437	.600	TAI-130
-U31		RG-187 DBL SHLD					
-34		BELDEN 8228					
-U34							
-36		275-3991 MICRODOT					
-U36		616-568 AMPEX					
-37		810 RAYCHEM					
-U37							
-41		RG-304, BELDEN					
-U41		9248, 9284, 9383					
-44		BRAND-REX B749					
-U44		60RE C05C032					
-51		88281 BELDEN					
-U51	1		1.030	.562	.500	.655	TAI-130
-52		89120 BELDEN					
-U52							
-53	1,3	89555 BELDEN	.997	.500	.437	.600	TAI-130
-U53							
-63		734A, AT&T					
-U63	2						TAI-130
-086		RG-405					
-U086							
-141							TAI-130
-U141		RG-402					

FIG 1
- 1 SHOWN

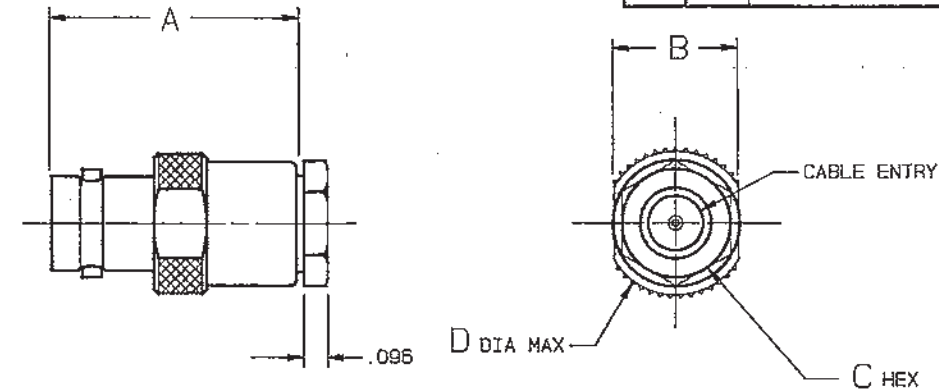


FIG 2
- 086 SHOWN

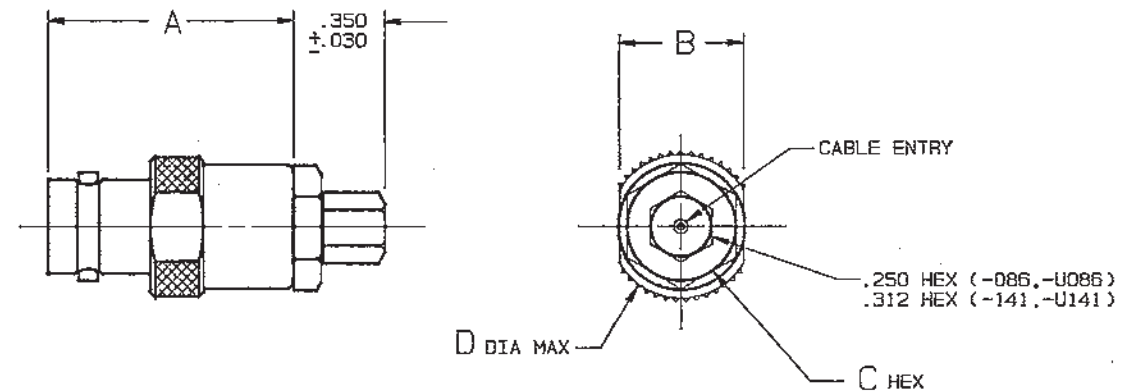
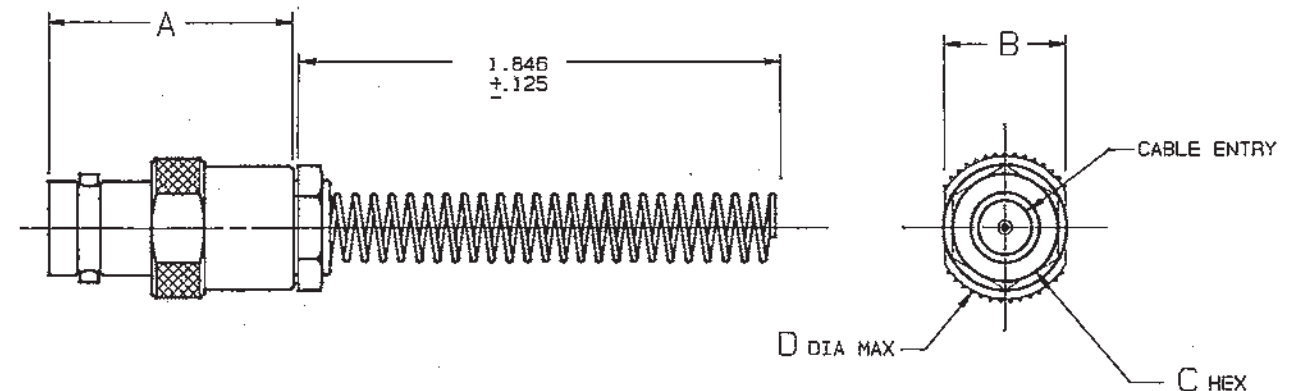


FIG 3
- 1 SHOWN



IF BEND RELIEF SPRING REQUIRED ADD SUFFIX "BR" TO MODEL NO. (SEE FIG 3) (NOT AVAILABLE WITH CABLE GROUPS -6, -U6, -6E, -U6E, -51, -U51, -52, -U52, -63, -U63, -086, -U086, -141 & -U141)

- DASH NO DENOTES CABLE GROUP EXCEPT "U" PREFIX DENOTES 75 OHM VERSION
- FEMALE TYPE BNC COAXIAL CABLE PLUG BOTH 50 & 75 OHM VERSIONS
- FINISH: TFS-1A (NICKEL)
- ALL DIM ARE IN INCHES

DISK #
C 4

DATA CONTAINED IN THIS DOCUMENT IS PROPRIETARY TO TROMPETER ELECTRONICS INC. AND SHALL NOT BE DISCLOSED, COPIED OR USED FOR PROCUREMENT OR MANUFACTURE WITHOUT EXPRESS WRITTEN PERMISSION.

REV		EO	DESCRIPTION	DWN	APPROVED	DATE
W	8594		ADDED -63 CABLE GROUP; DIM .600 & .655 WERE .570 AND .640; DWG NO WAS 1000-0134 AND REDRAWN	DJK		11-3-89

INCH	MM
.005	0.13
.030	0.76
.096	2.44
.125	3.18
.250	6.35
.312	7.92
.350	8.89
.437	11.10
.500	12.70
.562	14.27
.600	15.24
.655	16.64
.997	25.32
1.030	26.16
1.846	46.89

TOL UNLESS SPECIFIED		DESCRIPTION		PART NUMBER		ITEM
.XX ±	.XXX ± .005	TROMPETER RF connectivity		CJ20/UCJ20		
.XXX ±	.XXX ±	DWN		CJ20BR/UCJ20BR		
ANGLE ±		CHK	DJK	9/15/89	MATERIAL	CODE IDENT
		ENGR	DJK	10/27/89	14949	DRAWING NO.
		APPR	DJK	11-3-89	1-0134	REV
					SCALE 2/1	DATE 1/17/86
						SHEET 1 OF 2

Mouser Electronics

Authorized Distributor

Click to View Pricing, Inventory, Delivery & Lifecycle Information:

[Cinch Connectivity Solutions:](#)

[CJ20-5](#) [CJ20-44](#) [CJ20-5A](#) [CJ20-1](#)