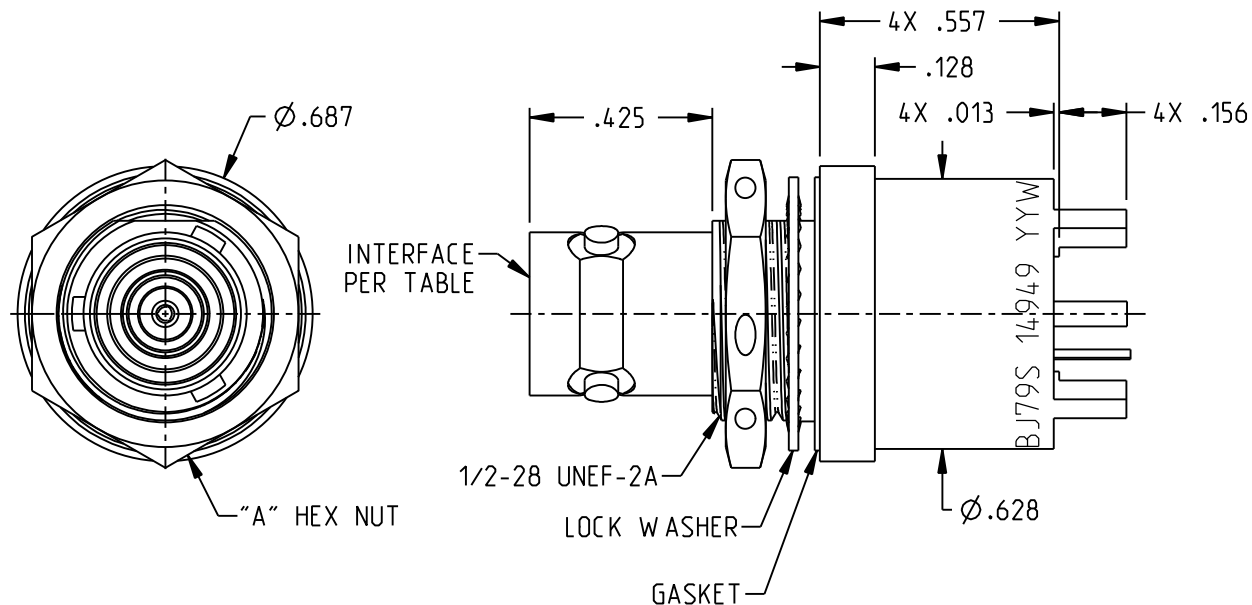


MODEL NUMBER	"A"	INTERFACE PER	SH
CBBJ79	9/16	MIL-STD-348 FIG. 201-2	1
CBBJ79S	5/8 w/3X $\varnothing$ .047 SAFETY WIRE HOLES		
CBBJ79TL	9/16		
CBBJ79TLS	5/8 w/3X $\varnothing$ .047 SAFETY WIRE HOLES		
CBBJ79FL	9/16		
CBBJ79FLS	5/8 w/3X $\varnothing$ .047 SAFETY WIRE HOLES		
CBBJ379	9/16	MIL-STD-348 FIG. 202-2	2
CBBJ379S	5/8 w/3X $\varnothing$ .047 SAFETY WIRE HOLES		
CBBJ79TL-1M	9/16	MIL-STD-348 FIG. 201-2	2
CBBJ379-1M	9/16	MIL-STD-348 FIG. 202-2	



CBBJ79S SHOWN  
UNLESS SPECIFIED DIMENSIONS  
COMMON TO ALL MODEL NUMBERS

NOTES: UNLESS OTHERWISE SPECIFIED.

1. MATERIAL & FINISH:
  - 1.1 BODY: TIN PLATED BRASS
  - 1.2 INSULATOR & DIELECTRIC: PTFE (TEFLON)
  - 1.3 INTERMEDIATE CONTACT: GOLD PLATED BRASS
  - 1.4 CENTER CONTACT: GOLD PLATED BERYLLIUM COPPER
  - 1.5 GASKET: SILICONE RUBBER
  - 1.6 MOUNTING HARDWARE: GOLD PLATED COPPER ALLOY

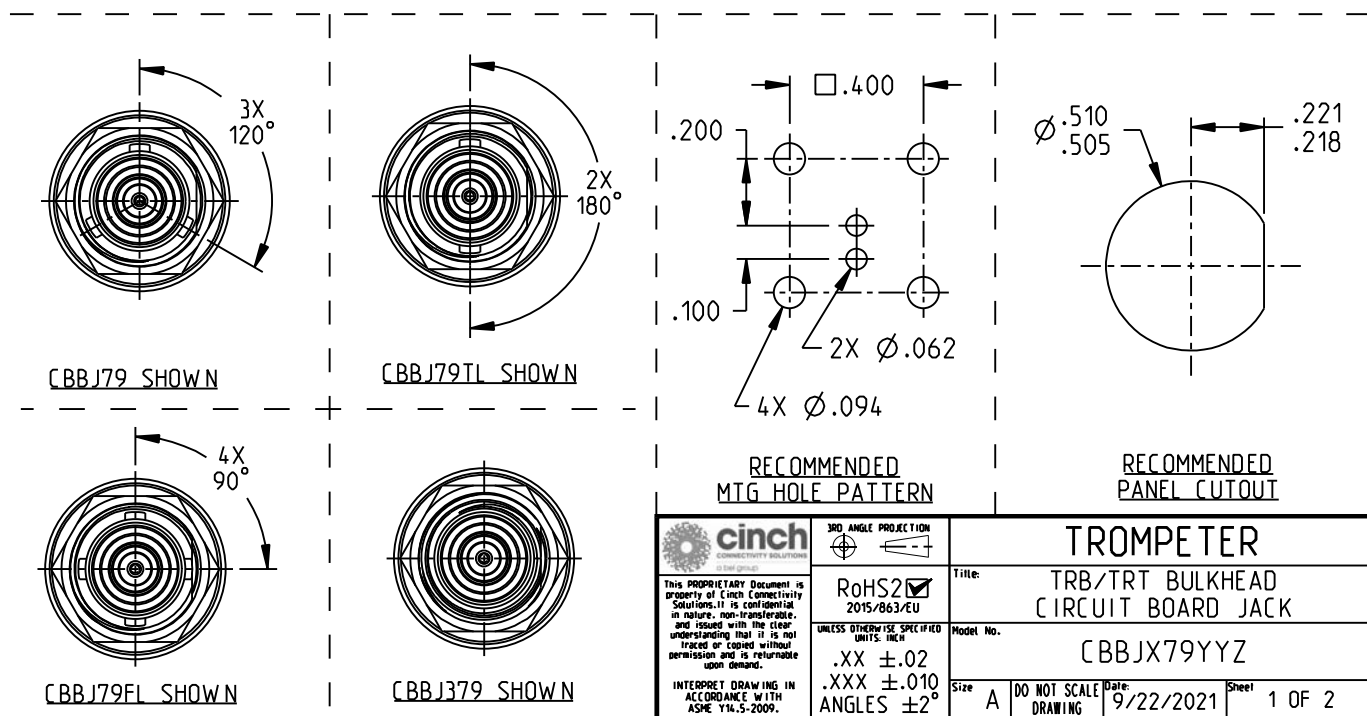
2. ELECTRICAL:
  - 2.1 FREQUENCY (MAX): 500 MHZ
  - 2.2 IMPEDANCE: NON-CONSTANT

3. PANEL NUT TORQUE (MAX): 35 INCH POUNDS

4. PANEL THICKNESS (MAX): .109

5. EXAMPLE OF COMPLETE MODEL NUMBER

CBBJX79YYZ-AA  
S - SAFETY WIRE HOLES  
BASIC MODEL NO (PRE TABLE)



<b>cinch</b> <small>CONNECTIVITY SOLUTIONS</small> <small>This PROPRIETARY Document is property of Cinch Connectivity Solutions. It is confidential in nature, non-transferable, and issued with the clear understanding that it is not to be traced or copied without permission and is returnable upon demand.</small> <small>INTERPRET DRAWING IN ACCORDANCE WITH ASME Y14.5-2009.</small>		<b>3RD ANGLE PROJECTION</b> 	<b>TROMPETER</b> <b>TRB/TRT BULKHEAD CIRCUIT BOARD JACK</b>
<b>RoHS2</b> <small>2015/863/EU</small>	<small>UNLESS OTHERWISE SPECIFIED UNITS: INCH</small> <b>.XX ±.02</b> <b>.XXX ±.010</b> <b>ANGLES ±2°</b>	<small>Model No.</small> <b>CBBJX79YYZ</b>	<small>Title:</small> <b>TRB/TRT BULKHEAD CIRCUIT BOARD JACK</b>
<small>Size</small> <b>A</b>	<small>DO NOT SCALE DRAWING</small>	<small>Date:</small> <b>9/22/2021</b>	<small>Sheet</small> <b>1 OF 2</b>

# Mouser Electronics

Authorized Distributor

Click to View Pricing, Inventory, Delivery & Lifecycle Information:

[Cinch Connectivity Solutions:](#)

[CBBJ79](#)