

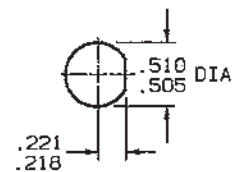
RED INDICATES ORIGINAL

DASH NO	CABLES ACCOMMODATED	ASSEMBLE PER
-7	TRC-50-2/TRC-75-2	TAI-189
-9	TWC-78-2/TWC-124-2	TAI-102
-23	250-3884, MICRODOT	TAI-189
-24	202-3934, MICRODOT	TAI-102
-24A	9530A5117, RAYCHEM	TAI-189
-25	T-43M GENERAL	TAI-102
-25A	5021H5331, RAYCHEM	TAI-189
-26	7028A5518, RAYCHEM	
-27	202-3927, MICRODOT	
-29	TWC-78-1/TWC-124-1A	TAI-102
-30	761A, W.E.CO./8441, BELDEN	
-32	TRC-50-1	
-33	TRC-75-1	
-42	21-204, ESSEX 4463, CONSOLIDATED	TAI-189
-43	250-4044/250-4045 293-3930, MICRODOT	TAI-102
-45	M27500-22TE2T14 1100-66F, STANDARD	
-47	M17/176-00002	
-49	TWAC-78-1F2	TAI-189
-55	89272, BELDEN	
-56	GC8756C1, GRUMMAN	
-57	GC8756B1, GRUMMAN	TAI-102
-58	GC875TM24H, GRUMMAN	TAI-189
-59	GC875LN1, GRUMMAN	
-60	M17/177, THERMATICS 380-10045, BOEING	
-64	7528A5314, RAYCHEM	

INCH	MM	INCH	MM
.005	0.13	.274	6.98
.096	2.44	.285	7.24
.125	3.18	.300	7.62
.132	3.35	.437	11.10
.145	3.68	.500	12.70
.160	4.06	.505	12.83
.164	4.17	.510	12.95
.183	4.65	.625	15.88
.191	4.85	.687	17.45
.199	5.03	.722	18.34
.200	5.08	.800	20.32
.217	5.51	1.314	33.38
.218	5.54	1.846	46.89
.221	5.61		
.235	5.97		

△ IF BEND RELIEF SPRING REQD ADD SUFFIX "BR" TO MODEL NO (SEE FIG 2)

- CONCENTRIC TWINAX/TRIAX 2-LUG TRB BULKHEAD MOUNT CABLE RECEPTACLE
- MAX PANEL THK .160
- FINISH:TFS-1A (NICKEL)
- ALL DIM ARE IN INCHES



RECOMMENDED
PANEL CUTOUT
SCALE: 1/1

FIG 1
-7 SHOWN

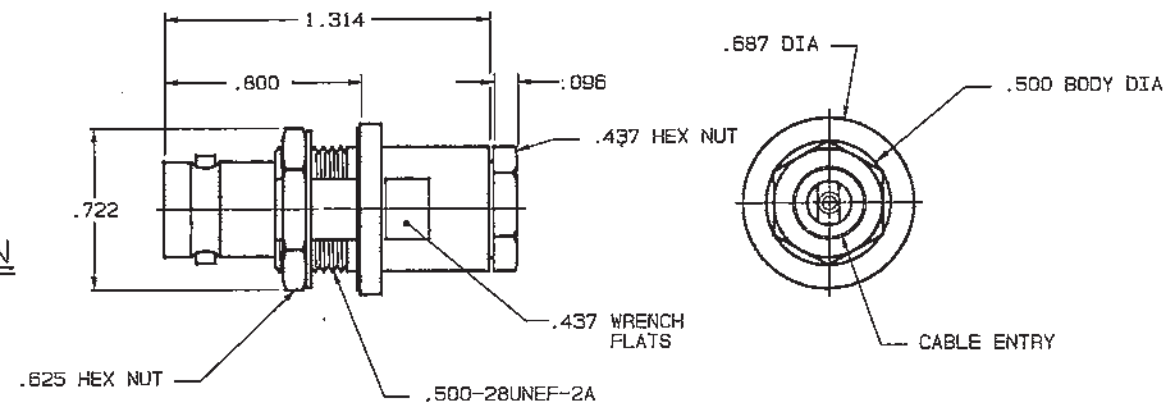
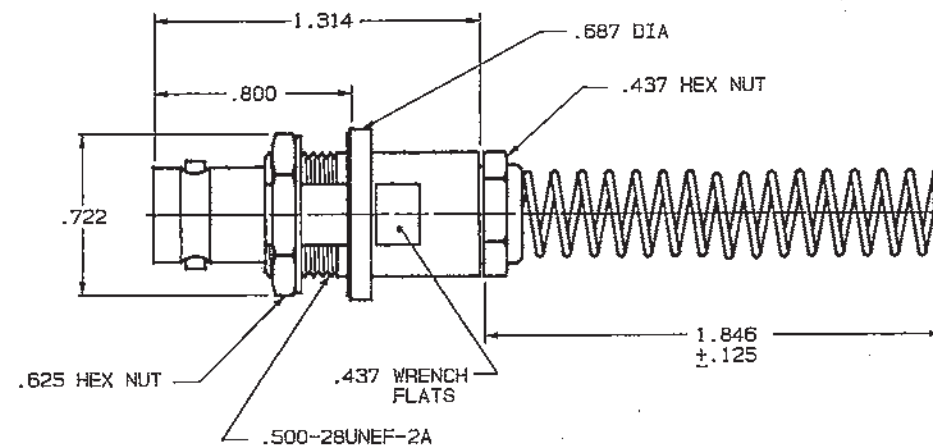


FIG 2 △
-7 SHOWN



CABLE ENTRY			
DASH NO	DIA	DASH NO	DIA
-7	.274	-33	.217
-9	.285	-42	.300
-23	.183	-43	.200
-24	.191	-45	.183
-24A	.200	-47	.164
-25	.285	-49	.132
-25A	.285	-55	.250
-26	.183	-56	.191
-27	.145	-57	.198
-29	.191	-58	.198
-30	.235	-59	.217
-32	.191	-60	.217

DISK # H 6
DWG SIZE C
DATA CONTAINED IN THIS DOCUMENT IS PROPRIETARY TO TROMPETER ELECTRONICS INC. AND SHALL NOT BE DISCLOSED, COPIED OR USED FOR PROCUREMENT OR MANUFACTURE WITHOUT EXPRESS WRITTEN PERMISSION.

REVISIONS			3-0112	SH 1
REV	EO	DESCRIPTION	DWN	APPROVED
H	9320	-7, -23, -24A, -25A, -26, -32, -33, -42, -43, -56, -57, -59, -60, -64, ASSY INSTRUCTIONS WAS TAI-104; & GENL UPDATE	DKC	B.M. 5/29/91

QTY	DESCRIPTION		PART NUMBER		ITEM
TOL UNLESS SPECIFIED .XX ± .XXX ± .005 .XXXX ± ANGLES ±	TROMPETER RF connectivity		8J79TL/BJ79TLBR		
DWN	DKC	5-14-91	MATERIAL	CODE IDENT	DRAWING NO.
CHK	B.M.	5-27-91		14949	3-0112
305-0515	ENGR		SCALE 2/1	DATE 4-26-84	SHEET 1 OF 2
NEXT ASSY	APPR	5-27-91			

Mouser Electronics

Authorized Distributor

Click to View Pricing, Inventory, Delivery & Lifecycle Information:

[Cinch Connectivity Solutions:](#)

[BJ79TL-64](#)