

PART NUMBER
134-1000-038

REV	ECO	DATE
1	INITIAL RELEASE	04SEP2020

NOTES:

1. MATERIAL AND FINISH:
- 1.1 BODY: STAINLESS STEEL, PASSIVATED

1.2 CONTACT: BERYLLIUM COPPER, GOLD PLATE

1.3 INSULATOR: ULTEM 1000, AMBER
2. ELECTRICAL SPECIFICATIONS:
- 2.1 IMPEDANCE: 50 OHMS NOMINAL

2.2 FREQUENCY RANGE: DC~50 GHz

2.3 VSWR: 1.30 MAX

2.4 DIELECTRIC WITHSTANDING VOLTAGE: 250 VRMS MIN

2.5 INSULATION RESISTANCE: 3500 MEGOHM MIN

2.6 CONTACT RESISTANCE:

2.6.1 CENTER CONTACT – 6.0 MILLIOHM MAX

2.6.2 OUTER CONDUCTOR – 2.0 MILLIOHM MAX
3. MECHANICAL SPECIFICATIONS:
- 3.1 ENGAGE/DISENGAGE FORCE: 0.23 Nm MAX (2.4MM)
2.5 LBS MAX/4.5 LBS MAX (SMP3)

3.2 CONTACT RETENTION: 20 N MIN

3.3 DURABILITY: 500 CYCLES MIN (2.4MM)
100 CYCLES MIN (SMP3)
4. ENVIRONMENTAL:
- (MEETS OR EXCEEDS THE APPLICABLE PARAGRAPH OF MIL-PRF-39012)

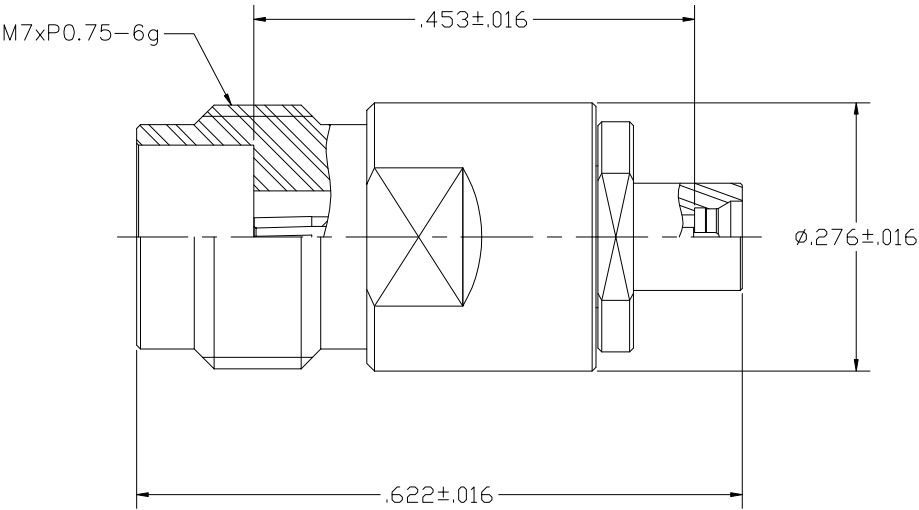
4.1 THERMAL SHOCK: MIL-STD-202, METHOD 107, CONDITION B



4.2 OPERATING TEMPERATURE: -65°C TO 165°C

4.3 MOISTURE RESISTANCE: MIL-STD-202, METHOD 106

4.4 MECHANICAL SHOCK: MIL-STD-202, METHOD 213, CONDITION I

4.5 VIBRATION: MIL-STD-202, METHOD 204, CONDITION D



 <p>cinch CONNECTIVITY SOLUTIONS <small>a harsco company</small></p> <p>This PROPRIETARY Document is property of Cinch Connectivity Solutions. It is confidential in nature, non-transferable, and issued with the clear understanding that it is not traced or copied without permission and is returnable upon demand.</p> <p>INTERPRET DRAWING IN ACCORDANCE WITH ASME Y14.5-2009.</p>	Model No: 134-1000-038		JOHNSON			
	RoHS <input checked="" type="checkbox"/> EU/2015/863 COMPLIANT	Cage Code	Title: ADAPTER ASSEMBLY, 2.4MM FEMALE TO SMP3 MALE			
	UNLESS OTHERWISE SPECIFIED UNITS: INCH		Drawing No: 134-1000-038		REV. 1	
	.XXX±.008 .XXXX±.004 ANGLES±5°	Drawn by: TOMMY REN Date: 09/04/2020	Size B DO NOT SCALE DRAWING		Workmanship Std: NONE Sheet 1 OF 1	

Mouser Electronics

Authorized Distributor

Click to View Pricing, Inventory, Delivery & Lifecycle Information:

[Cinch Connectivity Solutions:](#)

[134-1000-038](#)