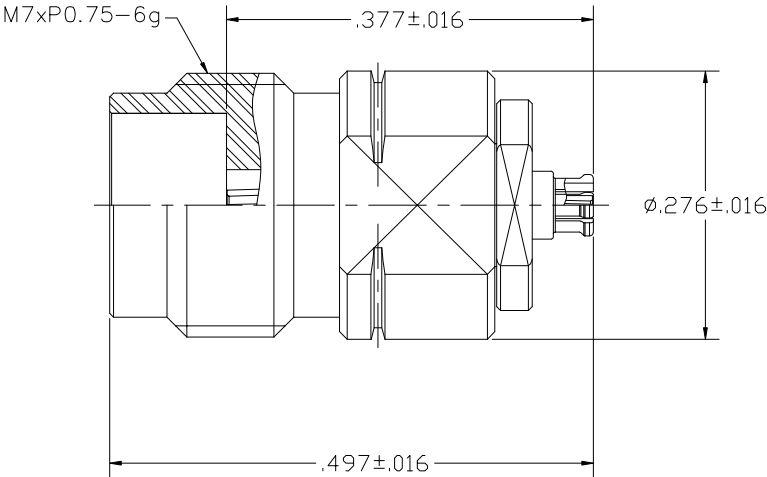




PART NUMBER	REV	ECO	DATE
134-1000-035	1	INITIAL RELEASE	04SEP2020

NOTES:

1. MATERIAL AND FINISH:
- 1.1 BODY: STAINLESS STEEL, PASSIVATED
BERYLLIUM COPPER, GOLD PLATE
 - 1.2 CONTACT: BERYLLIUM COPPER, GOLD PLATE
 - 1.3 INSULATOR: ULTEM 1000, AMBER
2. ELECTRICAL SPECIFICATIONS:
- 2.1 IMPEDANCE: 50 OHMS NOMINAL
 - 2.2 FREQUENCY RANGE: DC~67 GHz
 - 2.3 VSWR: 1.30 MAX
 - 2.4 DIELECTRIC WITHSTANDING VOLTAGE: 250 VRMS MIN
 - 2.5 INSULATION RESISTANCE: 3500 MEGOHM MIN
 - 2.6 CONTACT RESISTANCE:
 - 2.6.1 CENTER CONTACT – 6.0 MILLIOHM MAX
 - 2.6.2 OUTER CONDUCTOR – 2.0 MILLIOHM MAX
3. MECHANICAL SPECIFICATIONS:
- 3.1 ENGAGE/DISENGAGE FORCE: 0.23 Nm MAX (1.85MM)
2.5 LBS MAX/4.5 LBS MAX (SMP3 FULL DETENT)
1.2 LBS MAX/1 LBS MAX (SMP3 SMOOTH BORE)
 - 3.2 CONTACT RETENTION: 20 N MIN
 - 3.3 DURABILITY: 500 CYCLES MIN (1.85MM)
100 CYCLES MIN (SMP3 FULL DETENT)
500 CYCLES MIN (SMP3 SMOOTH BORE)
4. ENVIRONMENTAL:
- (MEETS OR EXCEEDS THE APPLICABLE PARAGRAPH OF MIL-PRF-39012)
- 4.1 THERMAL SHOCK: MIL-STD-202, METHOD 107, CONDITION B
 - 4.2 OPERATING TEMPERATURE: -65°C TO 165°C
 - 4.3 MOISTURE RESISTANCE: MIL-STD-202, METHOD 106
 - 4.4 MECHANICAL SHOCK: MIL-STD-202, METHOD 213, CONDITION I
 - 4.5 VIBRATION: MIL-STD-202, METHOD 204, CONDITION D



 <small>This PROPRIETARY Document is property of Cinch Connectivity Solutions. It is confidential in nature, non-transferable, and issued with the clear understanding that it is not traced or copied without permission and is returnable upon demand.</small> <small>INTERPRET DRAWING IN ACCORDANCE WITH ASME Y14.5-2009.</small>	Model No: 134-1000-035	JOHNSON	
	RoHS <input checked="" type="checkbox"/> (EU)2015/863 COMPLIANT	Cage Code	Title: ADAPTER ASSEMBLY, 1.85MM FEMALE TO SMP3 FEMALE
	UNLESS OTHERWISE SPECIFIED UNITS: INCH	3RD ANGLE PROJECTION 	Drawing No. 134-1000-035
	.XXX±.008 .XXXX±.004 ANGLES±5°	Drawn by: TOMMY REN Date: 09/04/2020	REV. 1
Size B		DO NOT SCALE DRAWING	Workmanship Std: NONE Sheet 1 OF 1

Mouser Electronics

Authorized Distributor

Click to View Pricing, Inventory, Delivery & Lifecycle Information:

[Cinch Connectivity Solutions:](#)

[134-1000-035](#)