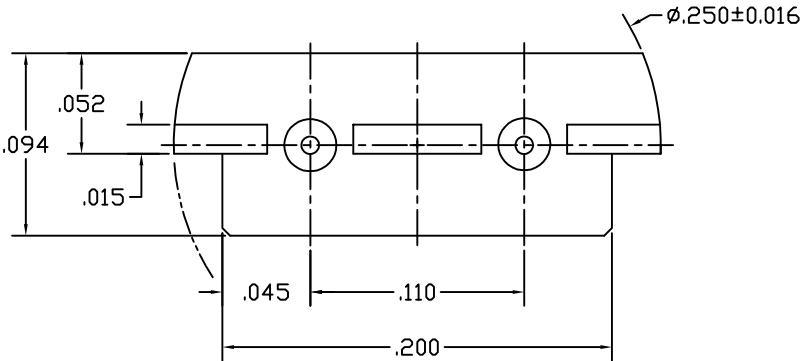
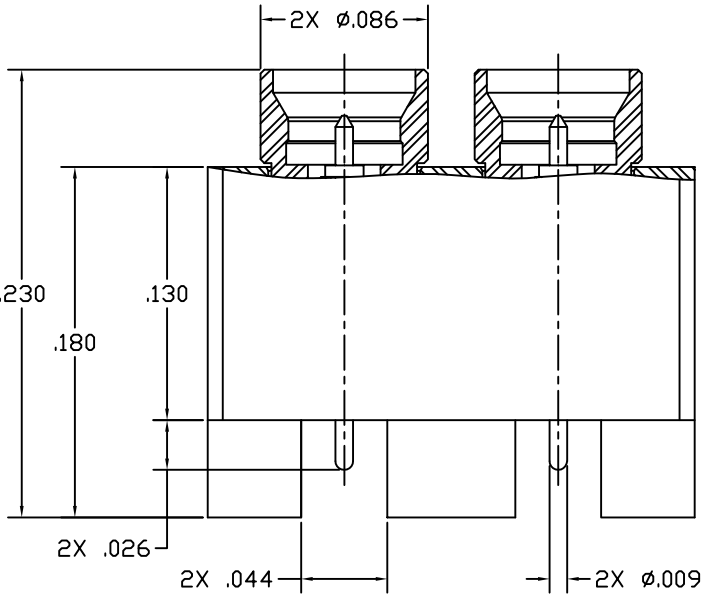




PART NUMBER	REV	ECO	DATE
123-0701-811	1	INITIAL RELEASE	16JUL2021

NOTES:

- MATERIAL AND FINISH:
  - BODY: STAINLESS STEEL, GOLD PLATE
  - CONTACT: BERYLLIUM COPPER, GOLD PLATE
  - INSULATOR: PTFE
- ELECTRICAL SPECIFICATIONS:
  - IMPEDANCE: 50 OHMS NOMINAL
  - FREQUENCY RANGE: DC~67 GHz
  - VSWR: 1.5 MAX
  - DIELECTRIC WITHSTANDING VOLTAGE: 250 VRMS MIN
  - INSULATION RESISTANCE: 3500 MEGOHM MIN
  - CONTACT RESISTANCE:
    - CENTER CONTACT – 10.0 MILLIOHM MAX
    - OUTER CONDUCTOR – 2.0 MILLIOHM MAX
- MECHANICAL SPECIFICATIONS:
  - ENGAGEMENT FORCE: 2.5 LBS MAX
  - DISENGAGEMENT FORCE: 4.5 LBS MAX
  - DURABILITY: 100 CYCLES MIN
- ENVIRONMENTAL:
  - THERMAL SHOCK: MIL-STD-202, METHOD 107, CONDITION B
  - OPERATING TEMPERATURE: -65°C TO 165°C
  - MECHANICAL SHOCK: MIL-STD-202, METHOD 213, CONDITION I
  - VIBRATION: MIL-STD-202, METHOD 204, CONDITION D
  - CORROSION: MIL-STD-202, METHOD 101, CONDITION B



 <p>This PROPRIETARY Document is property of Cinch Connectivity Solutions. It is confidential in nature, non-transferable, and issued with the clear understanding that it is not traced or copied without permission and is returnable upon demand.</p> <p>INTERPRET DRAWING IN ACCORDANCE WITH ASME Y14.5-2009.</p>	Model No:		123-0701-811/820		JOHNSON									
	RoHS <input checked="" type="checkbox"/> (EU)/2015/863 COMPLIANT		Cage Code		Title: SMP3 PLUG FULL DETENT 2 PORT SMT END LAUNCH									
	UNLESS OTHERWISE SPECIFIED: UNITS: INCH				Drawing No.		123-0701-811/820		REV.	1				
	.XXX ±.008 .XXXX ±.004 ANGLES ±5°		Drawn by: TOMMY REN		Date:		07/16/2021		Size	B	DO NOT SCALE DRAWING	Workmanship Std:	NONE	Sheet

# Mouser Electronics

Authorized Distributor

Click to View Pricing, Inventory, Delivery & Lifecycle Information:

[Cinch Connectivity Solutions:](#)

[123-0701-811](#)