



ELECTRICAL CHARACTERISTICS @ 25°C

TURNS RATIO

TX 1CT : 1

RX 1CT : 1

QCL @ 100kHz/100mVRMS

8mA DC BIAS 350µH MIN.

INS. LOSS

1MHz TO 100MHz -1.0 dB MAX

RET. LOSS (MIN)

1MHz-30MHz -18 dB

30MHz-60MHz -18+20LOG(F/30MHz) dB

60MHz-80MHz -12 dB

CROSS TALK (TX - RX)

500kHz-1MHz -70 dB MIN

10 MHz -50 dB MIN

30 MHz -45 dB MIN

50 MHz -40 dB MIN

100 MHz -35 dB MIN

CM TO CM REJ

100kHz-1MHz -70 dB MIN

10 MHz -47 dB MIN

30 MHz -42 dB MIN

60 MHz -37 dB MIN

100 MHz -30 dB MIN

CM TO DM REJ

100kHz-1MHz -70 dB MIN

10 MHz -60 dB MIN

30 MHz -50 dB MIN

60 MHz -45 dB MIN

100 MHz -40 dB MIN

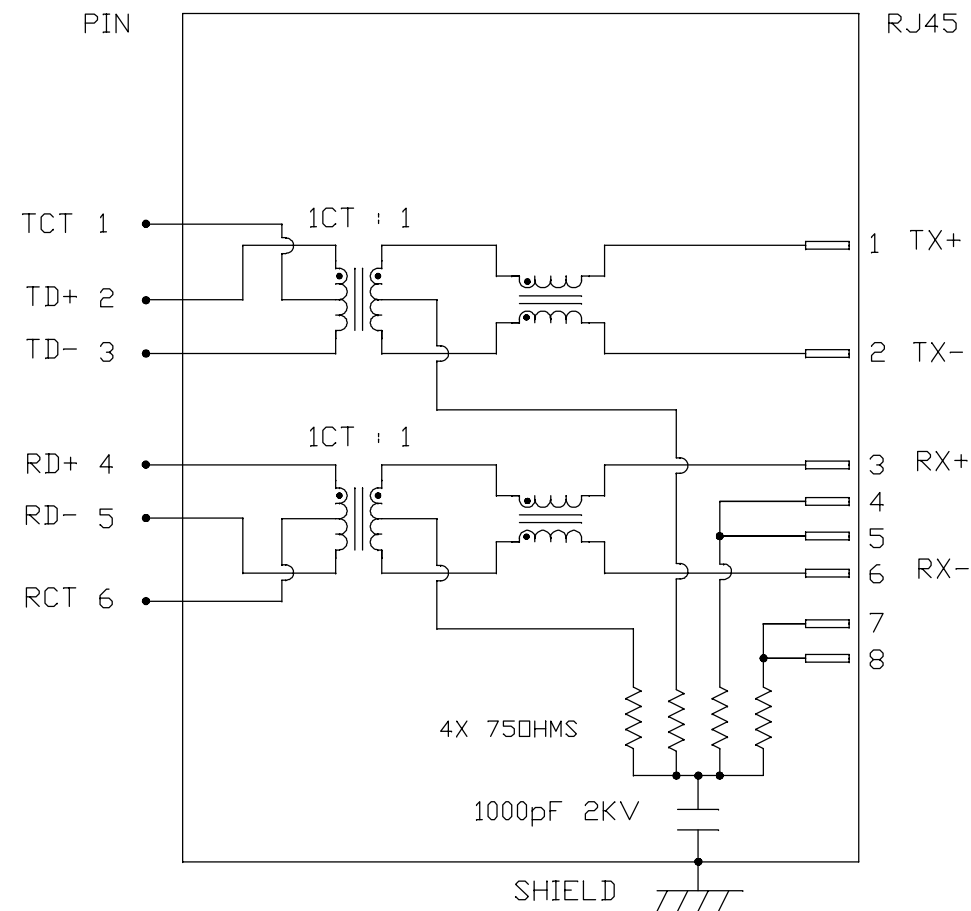
HIPOT (Isolation Voltage): 1500 Vrms or 2250VDC



100% OF PRODUCTION TESTED TO COMPLY WITH

IEEE 802.3 ISOLATION REQUIREMENTS.

OPERATING TEMPERATURE: 0°C TO +70°C.

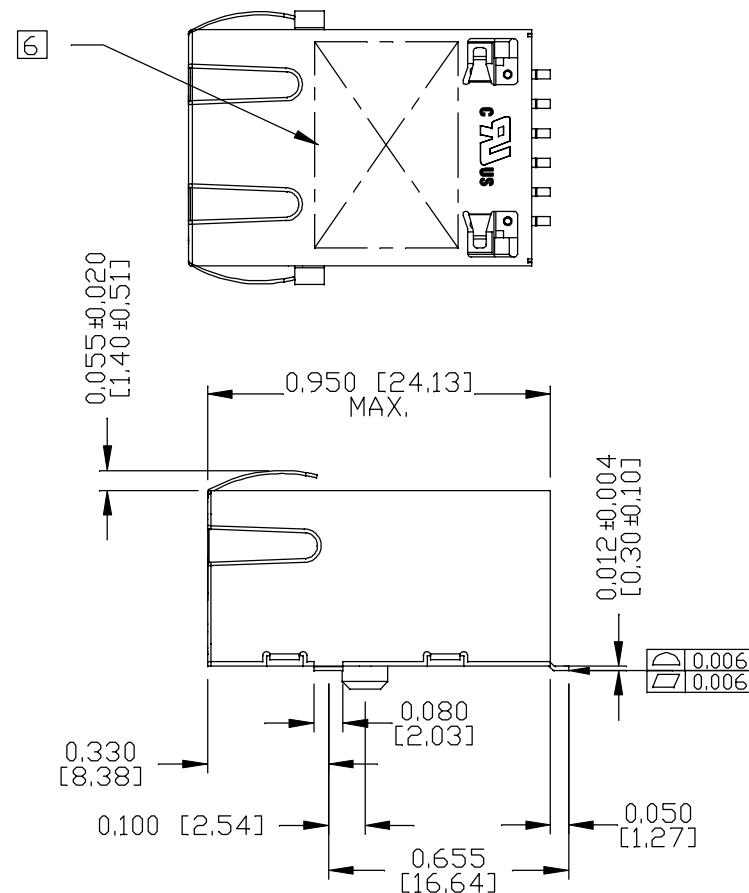
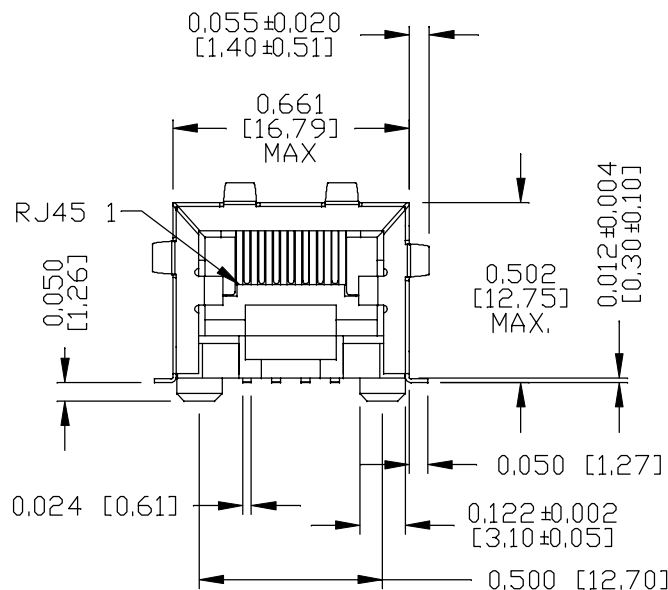
SCHEMATIC



<div>ORIGINATED BY CHOW WANCHUNG DATE 2017-03-10</div>	<div>TITLE SMD MagJack® (4 Cores,MDIX,CM Termination) S811-1X1T-06-F</div>	<div>PART NO. / DRAWING NO. S8111X1T06-F</div>	<div>STANDARD DIM. TOL. IN INCH</div>		<div>[] METRIC DIM. AS REF.</div>		<div><div><div>bel</div><div>MAGNETIC SOLUTIONS</div></div><div>a bel group</div></div>
<div>DRAWN BY LI LINFENG DATE 2017-03-10</div>		<div>FILE NAME S8111X1T06-F_G.DWG</div>	<div>.X</div>	<div></div>	<div>UNIT : INCH [mm]</div>		
			<div>.XX</div>		<div>SCALE : N/A</div>		
			<div>.XXX</div>		<div></div>	<div>SIZE : A4</div>	

THE INFORMATION CONTAINED HEREIN IS CONSIDERED "PROPRIETARY" TO BEL FUSE INC. AND SHALL NOT BE COPIED, REPRODUCED OR DISCLOSED WITHOUT THE WRITTEN APPROVAL OF BEL FUSE INC.

RoHS



NOTES:

1. PLASTIC HOUSING: THERMOPLASTIC PA & THERMOSET PHENOLIC. BLACK FLAMMABILITY RATING UL 94V-0
2. CONTACTS PLATING: 50 MICRO-INCH HARD GOLD PLATING OR EQUIVALENT.
3. PINS: TIN-COATED COPPER WIRE, 0.024 [0.6] X 0.012 [0.3] THK. 100 MICRO-INCH MIN MATTE TIN. PINS ARE SOLDER DIPPED.
4. METAL SHIELD: NICKEL PLATED COPPER ALLOY.
5. JACK CAVITY CONFORMS TO FCC RULES AND REGULATIONS.
6. MARK PART WITH MFG. LOGO, MFG. NAME, PART NUMBER AND DATE CODE.

7. THE PRODUCT IS RoHS COMPLIANT.

c RL us UL RECOGNIZED - FILE #E196366 AND E169987.

8. THE PART IS RECOMMENDED FOR WAVE SOLDERING. THE SUGGESTED PEAK WAVE SOLDERING CONDITION IS 260°C MAX AND 10 SECONDS MAX.

ORIGINATED BY
SANDY LIN
DATE 2017-03-10

TITLE
SMD MagJack®
(4 Cores,MDIX,CM Termination)
S811-1X1T-06-F

DRAWN BY
XUE RIPING
DATE 2017-03-10

PART NO. / DRAWING NO.
S8111X1T06-F

FILE NAME
S8111X1T06-F_G.DWG

STANDARD DIM. TOL. IN INCH		[] METRIC DIM. AS REF.
.X		UNIT : INCH [mm]
.XX		SCALE : N/A
.XXX	±0.010	SIZE : A4

REV. : G

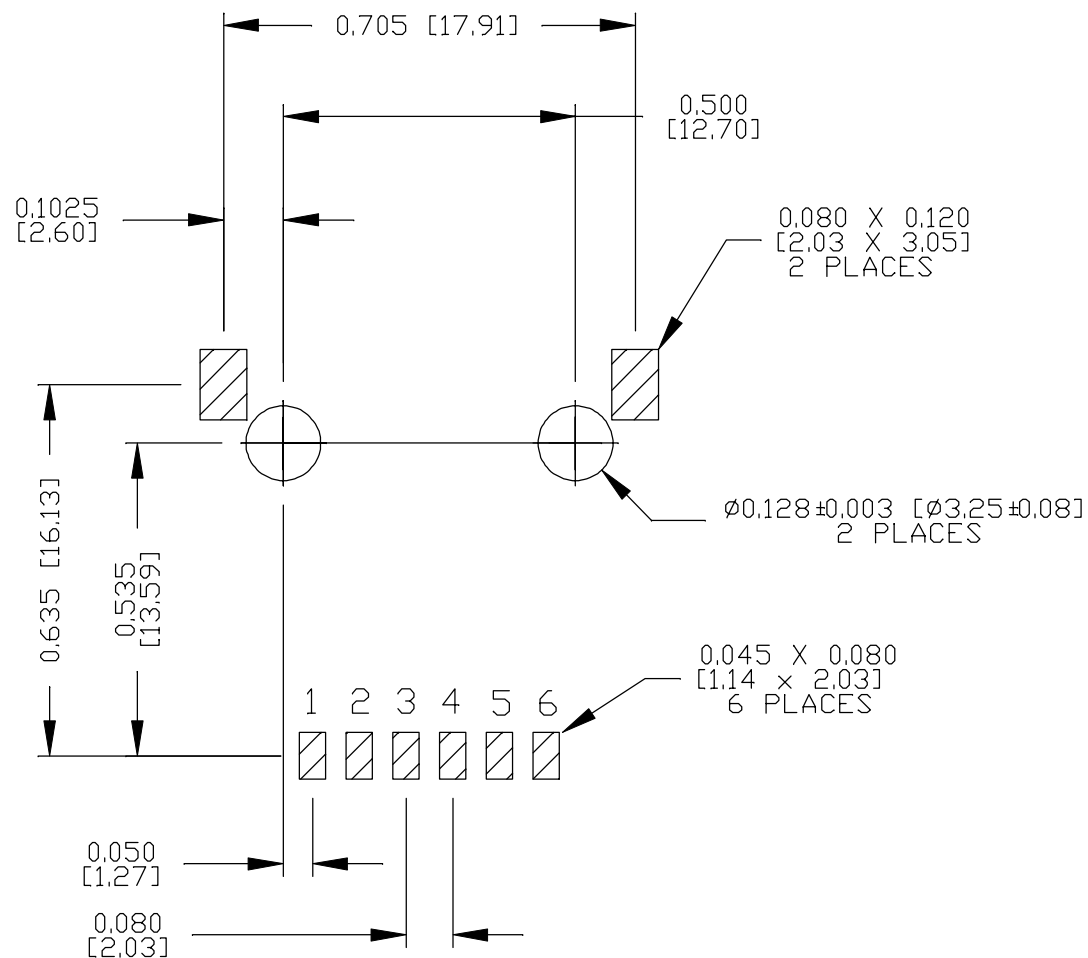
PAGE : 3





RECOMMENDED PCB FOOTPRINT

COMPONENT SIDE VIEW



ORIGINATED BY
SANDY LIN
DATE 2017-03-10

DRAWN BY
XUE RIPING
DATE 2017-03-10

TITLE
SMD MagJack ®
(4 Cores,MDIX,CM Termination)
S811-1X1T-06-F

PART NO. / DRAWING NO.
S8111X1T06-F

FILE NAME
S8111X1T06-F_G.DWG

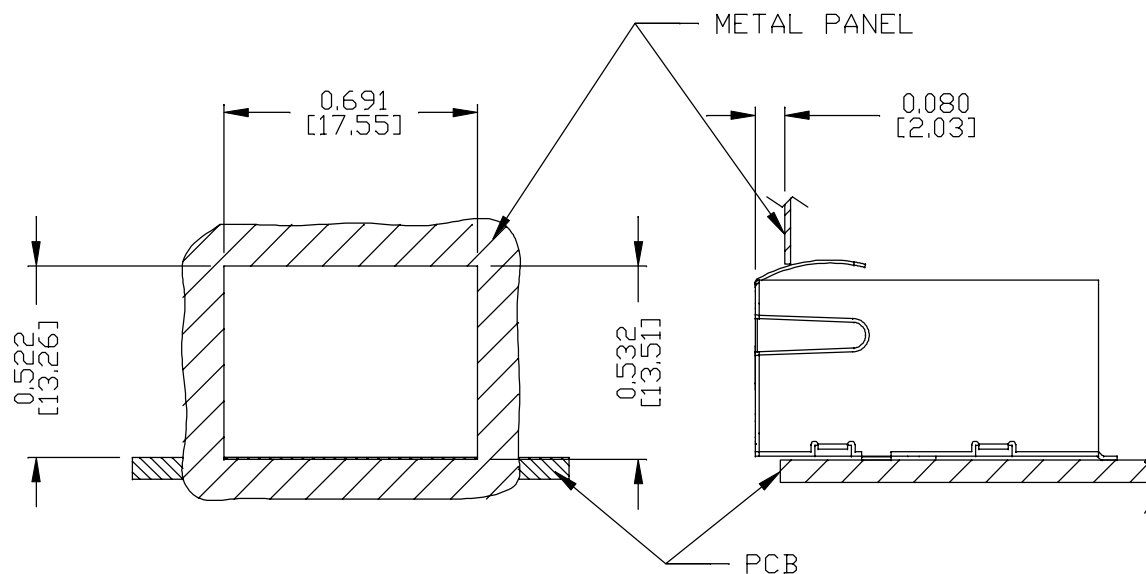
STANDARD DIM. TOL. IN INCH		[] METRIC DIM. AS REF.
.X		UNIT : INCH [mm]
.XX		SCALE : N/A
.XXX	±0.004	SIZE : A4

REV. : G	PAGE : 4
----------	----------


bel MAGNETIC SOLUTIONS
a bel group

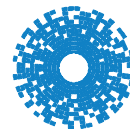
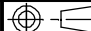


SUGGESTED PANEL OPENING



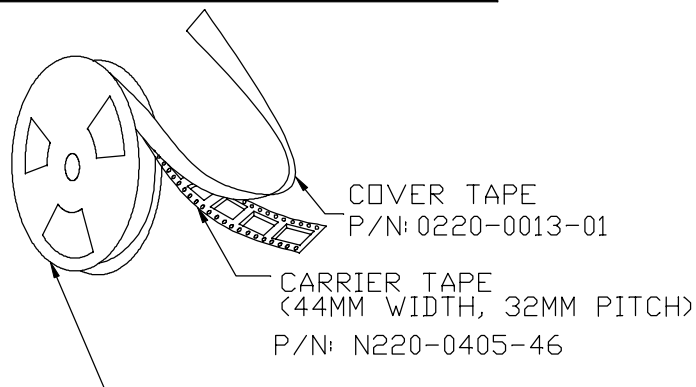
NOTES:

THE DISTANCE OF PANEL INSIDE SURFACE RELATIVE TO FRONT
SURFACE OF PART IS ONLY A SUGGESTION.
IN CASE THIS DISTANCE IS DIFFERENT, THE REQUIRED
PANEL OPENING DIMENSIONS CHANGE ACCORDINGLY.

ORIGINATED BY SANDY LIN DATE 2017-03-10		TITLE SMD MagJack® (4 Cores,MDIX,CM Termination) S811-1X1T-06-F		PART NO. / DRAWING NO. S8111X1T06-F		STANDARD DIM. TOL. IN INCH		[] METRIC DIM. AS REF.		REV. : G	PAGE : 5
DRAWN BY XUE RIPING DATE 2017-03-10		FILE NAME S8111X1T06-F_G.DWG		.X .XX .XXX		UNIT : INCH [mm] SCALE : N/A SIZE : A4		 bel MAGNETIC SOLUTIONS a bel group			
				±0.004							

THE INFORMATION CONTAINED HEREIN IS CONSIDERED "PROPRIETARY" TO BEL FUSE INC. AND SHALL NOT BE COPIED, REPRODUCED OR DISCLOSED WITHOUT THE WRITTEN APPROVAL OF BEL FUSE INC.

RoHS

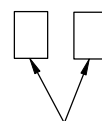


PLASTIC REEL
(OUTSIDE DIA.= 15", HUB DIA.= 4")

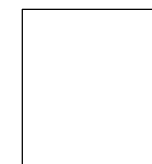
P/N: 0210-0005-01/02

NOTES:

- 1) LEAVES 48 INCHES COVER TAPE AND 5 EMPTY POCKETS AT TRAILER.
- 2) LEAVES 24 INCHES COVER TAPE AND 13 EMPTY POCKETS AT LEADER.
- 3) PACK 175 PCS PER REEL.
- 4) EACH BAGS SHOULD HAVE TWO BAGS SILICA GEL INSIDE MOISTURE BARRIER BAG. & VACUUM SEALED
- 5) EACH PIZZA BOX CONTAINS ONE (1) MOISTURE BARRIER BAG. (175 PCS FINISHED GOODS EACH PIZZA BOX).
- 6) EACH OUTER CARTON CONTAINS SIX (6) PIZZA BOXES. (1050 PCS FINISHED GOODS EACH OUTER CARTON).

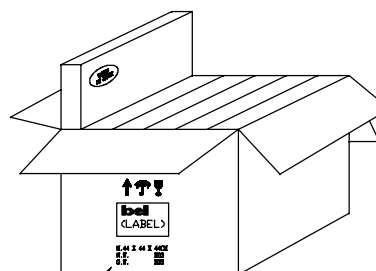


2 BAGS SILICA GEL
P/N: 0036-0010-03

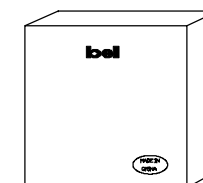


MOISTURE BARRIER BAG
(20.5"L X 19"W)
P/N: 0200-0143-17

VACUUM SEALED

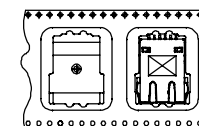


OUTER CARTON
(17"L X 17"W X 17"H)
P/N: 0200-9999-22




PIZZA BOX
(16"L X 16"W X 2.5"H)
P/N: 0200-1620-A1

USER FEED DIRECTION



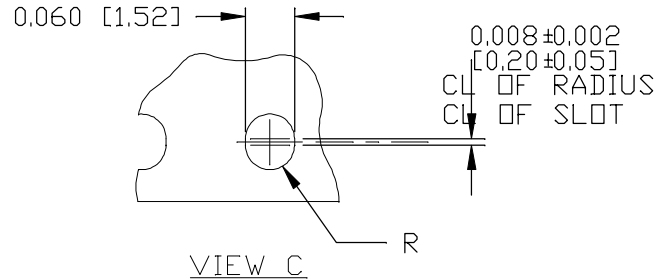
PART ORIENTATION & FEEDING DIRECTION.

ORIGINATED BY SANDY LIN DATE 2017-03-10	TITLE SMD MagJack® (4 Cores,MDIX,CM Termination) S811-1X1T-06-F	PART NO. / DRAWING NO. S811X1T06-F	STANDARD DIM. TOL. IN INCH	[] METRIC DIM. AS REF.	REV. : G PAGE : 6
DRAWN BY XUE RIPING DATE 2017-03-10		FILE NAME S811X1T06-F_G.DWG	.X .XX .XXX	UNIT : INCH [mm] SCALE : N/A SIZE : A4	

This document is electronically generated. This is a controlled copy if used internally

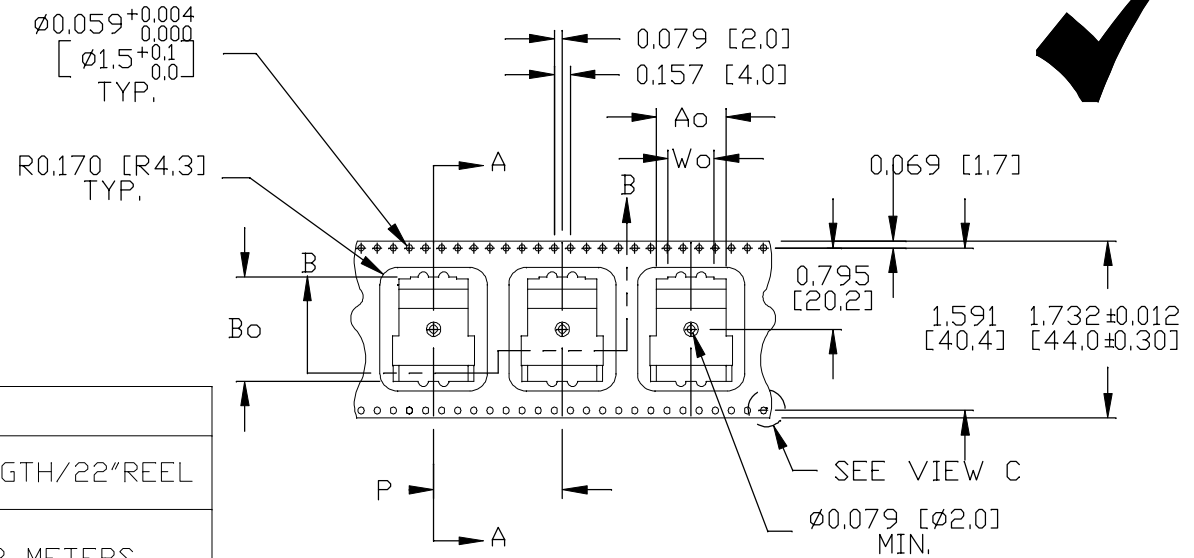
THE INFORMATION CONTAINED HEREIN IS CONSIDERED "PROPRIETARY" TO BEL FUSE INC. AND SHALL NOT BE COPIED, REPRODUCED OR DISCLOSED WITHOUT THE WRITTEN APPROVAL OF BEL FUSE INC.

RoHS



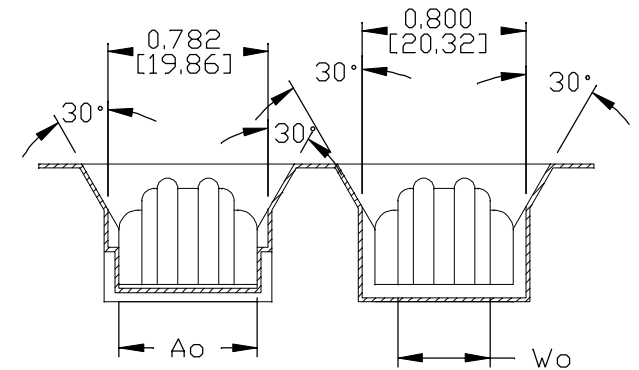
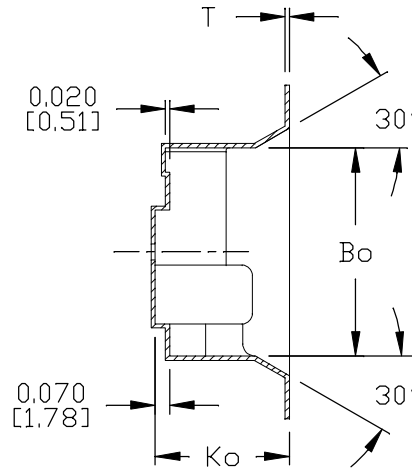
DIMENSION CHART

PART NUMBER	Ao	Bo	Ko	P	Wo	T	LENGTH/22"REEL
N220-0405-46	0.670 [17.02]	1.010 [25.65]	0.635 [16.13]	1.260 [32.00]	0.505 [12.83]	0.020 [0.50]	13 METERS



NOTES :

- ALL OTHER SPECIFICATIONS SHOULD MEET EIA 481-D STANDARD.



ORIGINATED BY
SANDY LIN
DATE 2017-03-10

DRAWN BY
XUE RIPING
DATE 2017-03-10

TITLE
SMD MagJack®
(4 Cores, MDIX, CM Termination)
S811-1X1T-06-F

PART NO. / DRAWING NO.
S8111X1T06-F

FILE NAME
S8111X1T06-F_G.DWG

STANDARD DIM. TOL. IN INCH	[] METRIC DIM. AS REF.
.X	UNIT : INCH [mm]
.XX	SCALE : N/A
.XXX	SIZE : A4

REV. : G PAGE : 7



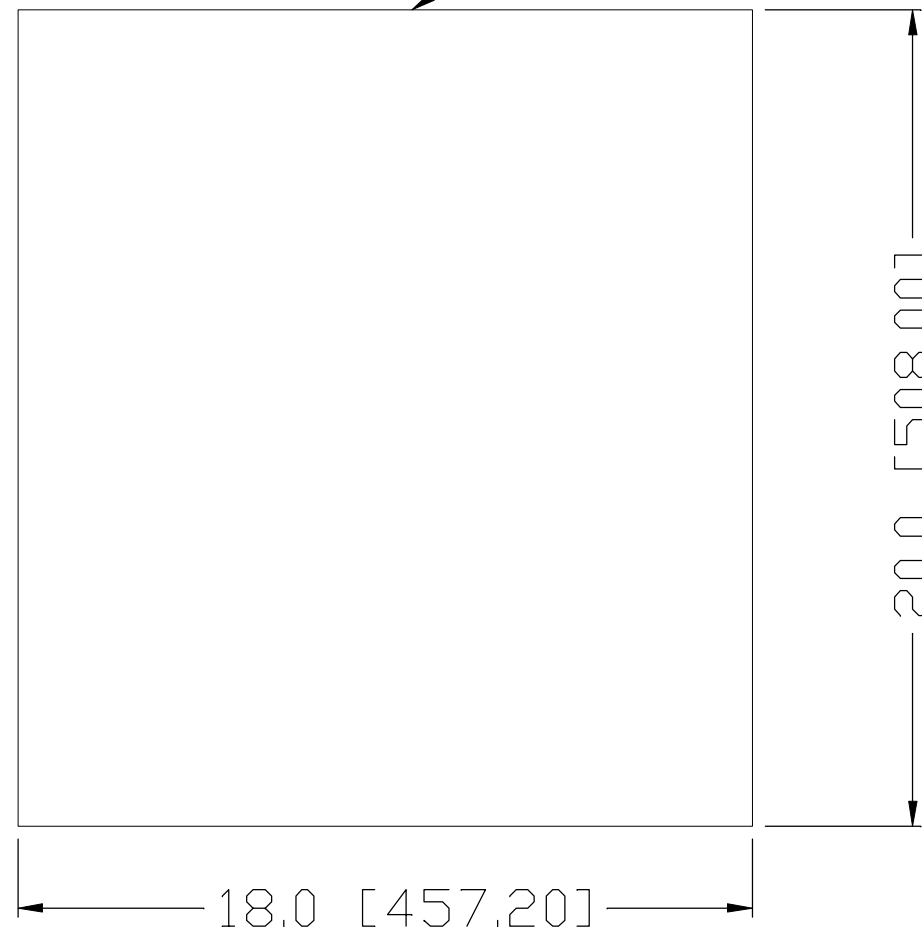
THE INFORMATION CONTAINED HEREIN IS CONSIDERED "PROPRIETARY" TO BEL FUSE INC. AND SHALL NOT BE COPIED, REPRODUCED OR DISCLOSED WITHOUT THE WRITTEN APPROVAL OF BEL FUSE INC.

MOISTURE BARRIER BAG

RoHS





OPEN HERE



NOTES:

1. MATERIAL : BI-LAYER LALMINATED MATERIAL CONTAINS NYLON & POLYETHYLENE.
2. MATERIAL THICKNESS : 0.003±0.0008".
3. COLOR : TRANSPARENT.
4. ALL DIMENSIONS REFER TO INSIDE DIMENSIONS.
5. 3 SIDES SEALING WITH 0.30 MINIMUM SEALING WIDTH
6. PRODUCT SPECIFIED HEREIN AND IT'S PACKING MATERIAL SUPPLIED TO BELFUSE MUST MEET EU RoHS REQUIREMENT.

REV. : G										PAGE : 8													
ORIGINATED BY SANDY LIN DATE 2017-03-10				TITLE SMD MagJack® (4 Cores,MDIX,CM Termination) S811-1X1T-06-F										PART NO. / DRAWING NO. S8111X1T06-F				STANDARD DIM. TOL. IN INCH		[] METRIC DIM. AS REF.			
DRAWN BY XUE RIPING DATE 2017-03-10														FILE NAME S8111X1T06-F_G.DWG				.X	±0.1	UNIT : INCH [mm]			
								.XX		SCALE : N/A													
								.XXX				SIZE : A4											
																							

Mouser Electronics

Authorized Distributor

Click to View Pricing, Inventory, Delivery & Lifecycle Information:

Bel:

[S811-1X1T-06-F](#)