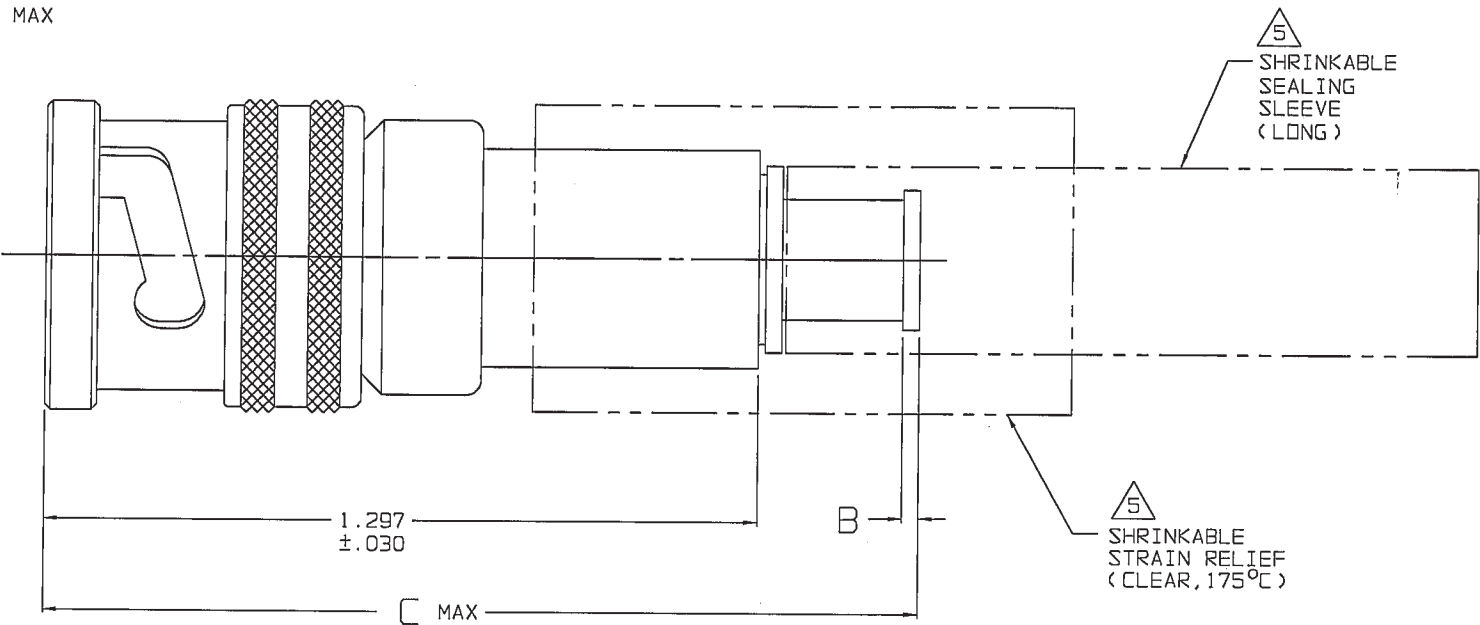
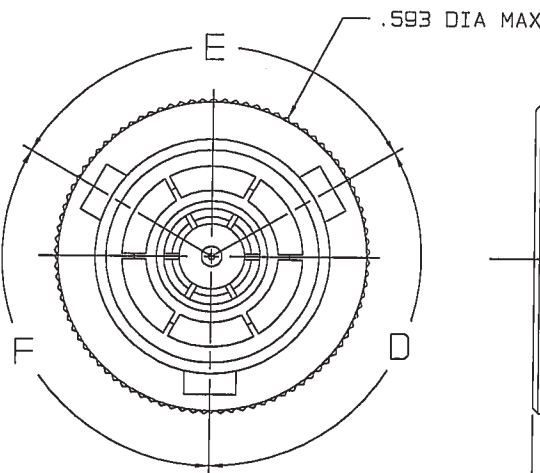


TABLE 1					
DASH NO	CABLES ACCOMMODATED	A HEX	B DIM	C MAX	ASSEMBLE PER
-201	M17/176-00002	.344	.030	1.70	TAI-166
-202	TWC-78-1				
-203	TWC-124-1A				
-204	10602 RAYCHEM				
-205	TWAC-78-1F2				
-206	7826D0130 RAYCHEM			1.44	TAI-138
-207	83310 BELDEN				
-208	202-3927 MICRODDOT				
-209	202-3942 MICRODDOT				
-210	8451 BELDEN				
-211	202-3934 MICRODDOT			1.70	TAI-166
-212	2524E0114 RAYCHEM				
-213	TWC-78-2				
-214	TWC-124-2				
-215	BL982, TIMES				
-216	BL1242, TIMES			1.44	TAI-138
-217	GC875TM24H GRUMMAN				
-218	EDP22188B, RAYCHEM				
-219	2526D1114 RAYCHEM				
-220	GC875RRI, GRUMMAN				
-221	10614, RAYCHEM			1.70	TAI-168
-222	10613, RAYCHEM				
-223	HMS2-1149, HUGHES				
-224	TWCP-124-3				
-225	PS665PL, PRIME STOCK				
-301	GC875GC1, GRUMMAN			1.70	TAI-218
-302	GC875GB1, GRUMMAN				
-303	7528A5314, RAYCHEM				
-304					
-305	M17/177-00001, THERMATICS				
-306	TRC-50-2				
-307	M17/134-00002				
-308	TRC-75-1				
-309	TRC-75-2				
-309	TRC-50-1				



RED INDICATES ORIGINAL

6. FOR TOOL CRIMP CONNECTOR QUALIFIED TO MIL-C-49142, SEE DRAWING 3-0285 (PL75MC)

1 SHRINKABLE STRAIN RELIEF AND/OR SHRINKABLE SEALING SLEEVE SUPPLIED LOOSE AS FOLLOWS:

a. CABLE GROUPS -201 THROUGH -210, -217 THROUGH -223, -301, -302, -303, -305, -307 & -309

1 SHRINKABLE STRAIN RELIEF (1.00 LONG)
1 SHRINKABLE SEALING SLEEVE (1.25 LONG)

b. CABLE GROUPS -211 THROUGH -216, -224, -225, -306 & -308

1 SHRINKABLE STRAIN RELIEF (1.75 LONG)

4. EXAMPLE OF COMPLETE MODEL NO:

PL75C T - 201
BASIC MODEL NO. CABLE GROUP DASH NO
POLARIZATION LETTER (SEE TABLE 1)
NONE REQD FOR STD POLARIZATION (SEE TABLE 2)

3. CONCENTRIC TWINAX/TRIAX 3-LUG TRB, FULL CRIMP CABLE PLUG


2. FINISH: TFS-1A (NICKEL)

1. ALL DIMENSIONS ARE IN INCHES

-202 SHOWN



TABLE 2 POLARIZATION CHART				
KEY LETTER	D DEGREES	E DEGREES	F DEGREES	COLOR BAND
NONE	120°	120°	120°	NONE
T	100°	150°	110°	RED
U	120°	130°	110°	ORANGE
V	115°	130°	115°	YELLOW
W	125°	110°	125°	GREEN
X	130°	100°	130°	BLUE
Y	110°	140°	110°	VIOLET
Z	100°	160°	100°	GRAY
S	135°	135°	90°	WHITE

INTERPRET DRAWING PER MIL-STD-100 DIMENSIONS ARE IN INCHES AND INCLUDE FINISH THICKNESS UNLESS OTHERWISE SPECIFIED		TOL: UNLESS SPECIFIED .XX .XXX ±.005 .XXXX ANGLES		 TROMPETER RF connectivity <small>a cinch connectivity solutions brand</small>			
DRAWN AAH	DATE 11-22-02	MATERIAL:	TITLE: PL75C/T/U/V W/X/Y/Z/S				
CHECKED S.K.	11-22-02	FINISH:	SIZE	CAGE CODE	DRAWING NO.	REV.	
QUALITY	11/26/02		B	14949	310-0054	AD	
MANUFACTURED	11/26/02		SCALE	NONE	DATE:	4/10/84	SHEET 1C
APPROVED 11/25/02			DO NOT SCALE DWG				
CAD FILE NO. 310-0054AD		NEXT ASSY					

Mouser Electronics

Authorized Distributor

Click to View Pricing, Inventory, Delivery & Lifecycle Information:

Cinch Connectivity Solutions:

[PL75C-202](#) [PL75C-301](#) [PL75C-305](#) [PL75C-302](#) [PL75C-210](#) [PL75C-308](#)