

RED IS ~~REDACTED~~ ORIGINAL

DISK # DWG SIZE
K 1 C

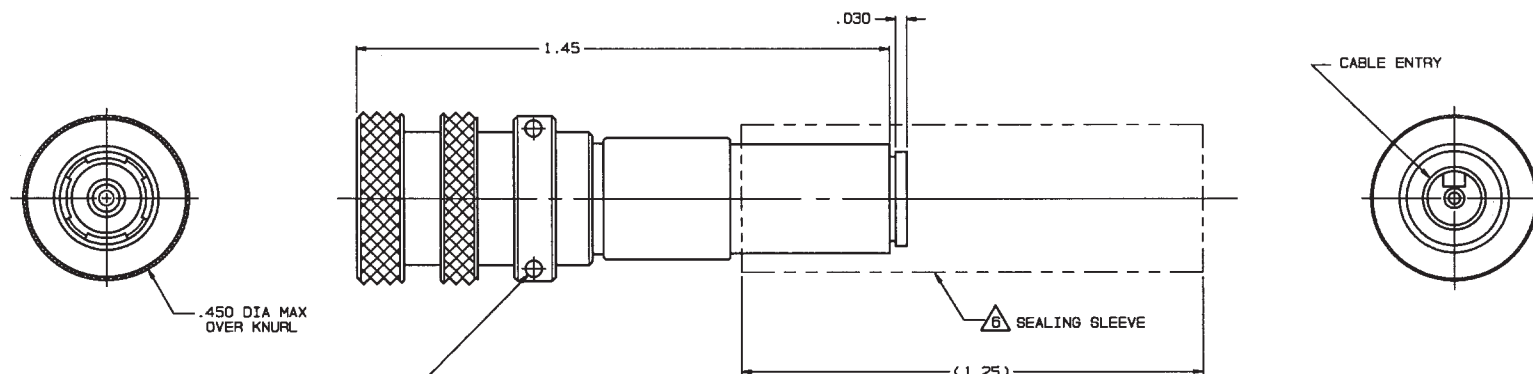
DATA CONTAINED IN THIS DOCUMENT IS PROPRIETARY TO TROMPETER ELECTRONICS INC. AND SHALL NOT BE DISCLOSED, COPIED OR USED FOR PROCUREMENT OR MANUFACTURE WITHOUT EXPRESS WRITTEN PERMISSION.

| REVISONS | | | 310-0067 | SH 1 |
|----------|-------|-------------------------------------------------------------------------------------------------------|----------|--------------------|
| REV | EO | DESCRIPTION | DWN | APPROVED |
| F | 10054 | PICTORIALLY CHANGED 1.00 FLARED SEALING SLEEVE TO STRAIGHT (1.25) LONG SEALING SLEEVE; GENERAL UPDATE | DKC | <i>OK</i> 12/13/92 |

| TABLE 1 | | |
|---------|------------|-----------------------------------|
| DASH NO | MODEL NO | CENTER CONTACT/INTMD CONTACT TYPE |
| -1 | PL3455AC P | SOCKET/PIN |
| -2 | PL3455AC S | PIN/SOCKET |

| TABLE 2 | | |
|----------------|------------------------|--------------|
| CABLE GROUP NO | CABLES ACCOMMODATED | ASSEMBLY PER |
| -201 | M17/176-00002 | |
| -202 | TWC-78-1, TROMPETER | |
| -203 | TWC-124-1A, TROMPETER | |
| -204 | 10602, RAYCHEM | |
| -205 | TWAC-78-1F2, TROMPETER | |
| -206 | 782600130, RAYCHEM | |
| -208 | 202-3927, MICRODOT | |
| -209 | 202-3942, MICRODOT | |
| -212 | 2524E0114, RAYCHEM | |
| -217 | GC875TM24H, GRUMMAN | |
| -218 | EPD221888, RAYCHEM | |
| -219 | 2526D1114, RAYCHEM | |
| -220 | GC875RR1, GRUMMAN | |
| -221 | 10614, RAYCHEM | |
| -222 | 10613, RAYCHEM | |
| -223 | HMS2-1149, HUGHES | |
| -303 | 7528A5314, RAYCHEM | TAI-190 |

| INCH | MM |
|------|-------|
| .002 | 0.05 |
| .005 | 0.13 |
| .030 | 0.76 |
| .045 | 1.14 |
| .255 | 6.48 |
| .450 | 11.43 |
| 1.25 | 31.75 |
| 1.45 | 36.83 |



△ SEALING SLEEVE & CRIMP BUSHING SUPPLIED LOOSE WITH EACH CONNECTOR; EXCEPT SEALING SLEEVE NOT USED ON -205, -208 & -223

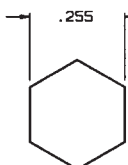
5. EXAMPLE OF COMPLETE MODEL NO:

PL3455AC P -201
BASIC MODEL NO CABLE GROUP NO (SEE TABLE 2)
CENTER & INTERMEDIATE CONTACT TYPE (SEE TABLE 1)

4. EXAMPLE OF COMPLETE PART NO:

310-0067 - 1 - 201
BASIC PART NO DASH NO (SEE TABLE 1) CABLE GROUP NO (SEE TABLE 2)

-1 -202 SHOWN



RECOMMENDED
HEX CRIMP

3. CONCENTRIC TWINAX 4 PIECE ASSY. FULL CRIMP
CABLE PLUG, SOCKET CENTER
CONTACT AND PIN INTERMEDIATE CONTACT OR PIN CENTER
CONTACT AND SOCKET INTERMEDIATE CONTACT

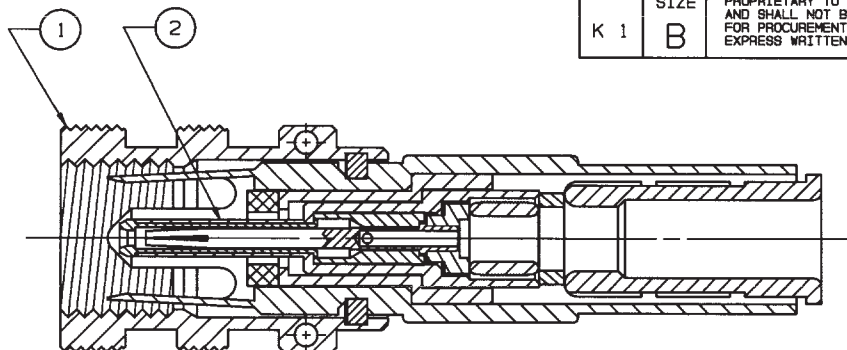
2. TFS-1U (500 HRS SALT SPRAY; NICKEL)

1. ALL DIM ARE IN INCHES

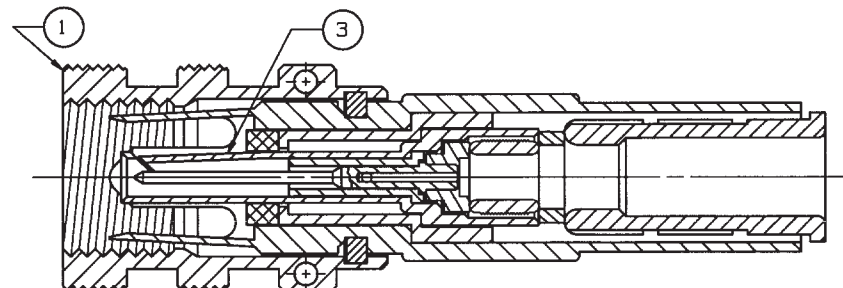
| QTY | DESCRIPTION | PART NUMBER | ITEM |
|------------------------------------------------------------------------------|-------------------------------------|--------------|--------------|
| TOL UNLESS SPECIFIED .XX ± .03 .XXX ± .005 .XXXX ± .0005 ANGLES: | TROMPETER RF connectivity | PL3455ACP/S | |
| DWN DKC 12-3-92 | MATERIAL | CODE IDENT | DRAWING NO. |
| CHK <i>OK</i> | | 14949 | 310-0067 |
| ENGR | SCALE 4/1 | DATE 10-7-87 | SHEET 1 OF 2 |
| APPR <i>OK</i> | NEXT ASSY | | |

RED INDICATES ORIGINAL

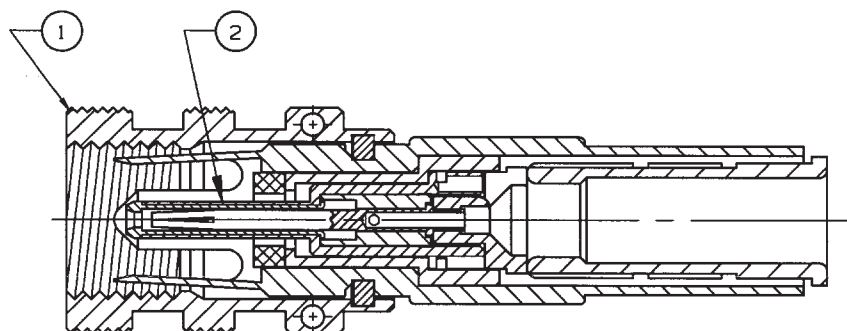
| | | | | | | | | |
|-------------------|----------------------|--------------------------------------------------------------------------------------------------------------------------------------------------------------------------------------------------------|-----------|----|-------------|----------|----------|------|
| DISK # K 1 | DWG SIZE B | DATA CONTAINED IN THIS DOCUMENT IS PROPRIETARY TO TROMPETER ELECTRONICS INC. AND SHALL NOT BE DISCLOSED, COPIED OR USED FOR PROCUREMENT OR MANUFACTURE WITHOUT EXPRESS WRITTEN PERMISSION. | REVISIONS | | | 310-0067 | | SH 2 |
| | | | REV | EO | DESCRIPTION | DWN | APPROVED | DATE |



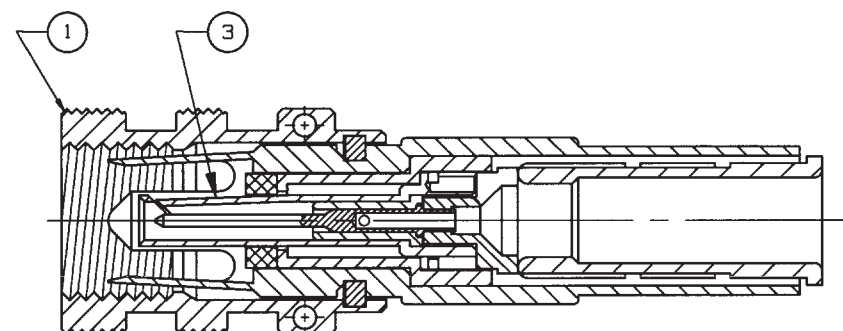
-1-303 SHOWN



-2-303 SHOWN




-1-221 SHOWN



-2-221 SHOWN

1 DASH NO SAME AS CABLE GROUP NO

| | | | | | | | |
|----------------------------------------|-------|-------------------------|----------------------------------------------------------------------------------------------------------------------------------------------------------------------------------|-------------|--------------|-------------|------|
| 1 | 1 | SP450AC - 1 | 1 | 8-2496- | 1 | 3 | |
| 1 | 1 | PS450AC - 1 | 1 | 8-2495- | 1 | 2 | |
| 1 | 1 | BODY ASSY. PL3455AC - 1 | 1 | 8-2554- | 1 | 1 | |
| -2 | -1 | DESCRIPTION | | | PART NUMBER | | ITEM |
| TOL UNLESS SPECIFIED | | |  TROMPETER RF connectivity <small>a dtech-connectivity solutions brand</small> | PL3455ACP/S | | | |
| .XX ± .XXX ± .XXXX ± ANGLES ± | | | | | | | |
| DWN | DKC | 12-3-92 | | MATERIAL | CODE IDENT | DRAWING NO. | REV |
| CHK | DKC | 12/4/92 | _____ | 14949 | 310-0067 | F | |
| ENGR | _____ | _____ | _____ | _____ | _____ | _____ | |
| ASSY | APPR | KY | 12/29/92 | SCALE 4/1 | DATE 10-7-87 | SHEET 2 | |

NEXT ASSY

Mouser Electronics

Authorized Distributor

Click to View Pricing, Inventory, Delivery & Lifecycle Information:

[Cinch Connectivity Solutions:](#)

[PL3455ACS-303](#)