

# RED IS ~~REDACTED~~ ORIGINAL

DISK # DWG SIZE  
K 1 C

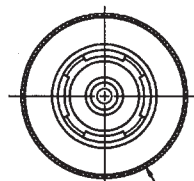
DATA CONTAINED IN THIS DOCUMENT IS PROPRIETARY TO TROMPETER ELECTRONICS INC. AND SHALL NOT BE DISCLOSED, COPIED OR USED FOR PROCUREMENT OR MANUFACTURE WITHOUT EXPRESS WRITTEN PERMISSION.

| REVISIONS |       |   | 310-0067 | SH 1               |
|-----------|-------|---|----------|--------------------|
| REV       | EO    | DESCRIPTION   | DWN      | APPROVED           |
| F         | 10054 | PICTORIALLY CHANGED 1.00 FLARED SEALING SLEEVE TO STRAIGHT (1.25) LONG SEALING SLEEVE; GENERAL UPDATE | DKC      | <i>OK</i> 12/13/92 |

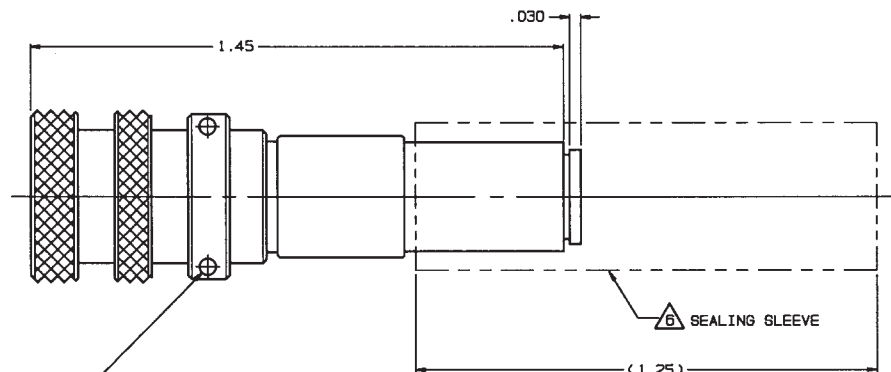
| TABLE 1 |            |                                   |
|---------|------------|-----------------------------------|
| DASH NO | MODEL NO   | CENTER CONTACT/INTMD CONTACT TYPE |
| -1      | PL3455AC P | SOCKET/PIN                        |
| -2      | PL3455AC S | PIN/SOCKET                        |

| TABLE 2        |                        |              |
|----------------|------------------------|--------------|
| CABLE GROUP NO | CABLES ACCOMMODATED    | ASSEMBLY PER |
| -201           | M17/176-00002          |              |
| -202           | TWC-78-1, TROMPETER    |              |
| -203           | TWC-124-1A, TROMPETER  |              |
| -204           | 10602, RAYCHEM         |              |
| -205           | TWAC-78-1F2, TROMPETER |              |
| -206           | 782600130, RAYCHEM     |              |
| -208           | 202-3927, MICRODOT     |              |
| -209           | 202-3942, MICRODOT     |              |
| -212           | 2524E0114, RAYCHEM     |              |
| -217           | GC875TM24H, GRUMMAN    |              |
| -218           | EPD221888, RAYCHEM     |              |
| -219           | 2526D1114, RAYCHEM     |              |
| -220           | GC875RR1, GRUMMAN      |              |
| -221           | 10614, RAYCHEM         |              |
| -222           | 10613, RAYCHEM         |              |
| -223           | HMS2-1149, HUGHES      |              |
| -303           | 7528A5314, RAYCHEM     | TAI-190      |

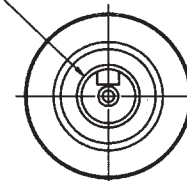
| INCH | MM    |
|------|-------|
| .002 | 0.05  |
| .005 | 0.13  |
| .030 | 0.76  |
| .045 | 1.14  |
| .255 | 6.48  |
| .450 | 11.43 |
| 1.25 | 31.75 |
| 1.45 | 36.83 |



.450 DIA MAX OVER KNURL



CABLE ENTRY



SEALING SLEEVE & CRIMP BUSHING SUPPLIED LOOSE WITH EACH CONNECTOR; EXCEPT SEALING SLEEVE NOT USED ON -205, -208 & -223

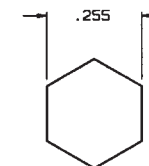
5. EXAMPLE OF COMPLETE MODEL NO:

PL3455AC P -201  
BASIC MODEL NO CABLE GROUP NO (SEE TABLE 2)  
CENTER & INTERMEDIATE CONTACT TYPE (SEE TABLE 1)

4. EXAMPLE OF COMPLETE PART NO:

310-0067 -1 -201  
BASIC PART NO DASH NO (SEE TABLE 1) CABLE GROUP NO (SEE TABLE 2)

-1 -202 SHOWN



RECOMMENDED  
HEX CRIMP

3. CONCENTRIC TWINAX 4 PIECE ASSY. FULL CRIMP  
CABLE PLUG, SOCKET CENTER  
CONTACT AND PIN INTERMEDIATE CONTACT OR PIN CENTER  
CONTACT AND SOCKET INTERMEDIATE CONTACT

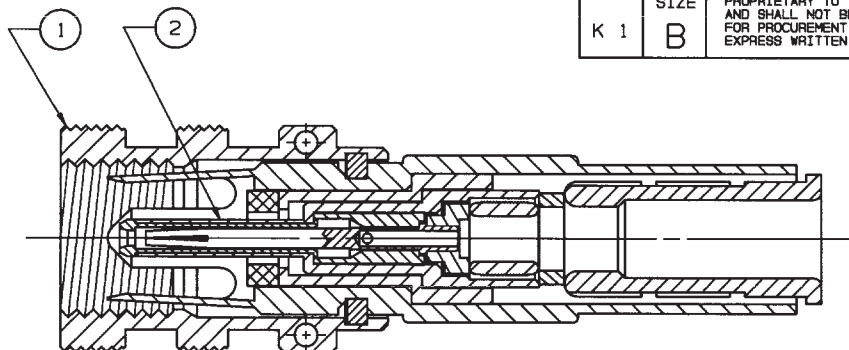
2. TFS-1U (500 HRS SALT SPRAY; NICKEL)

1. ALL DIM ARE IN INCHES

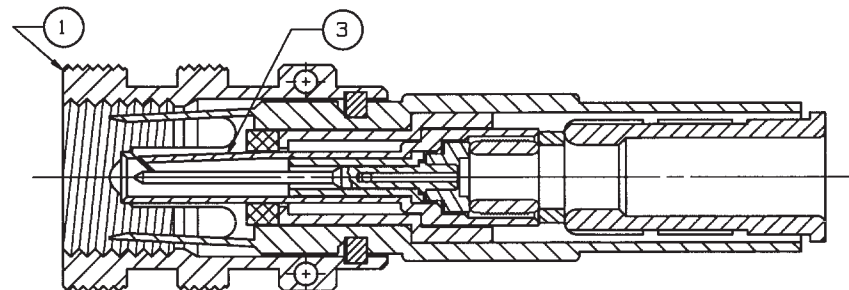
| QTY  | DESCRIPTION                         | PART NUMBER  | ITEM         |
|--|-------------------------------------|--------------|--------------|
| TOL UNLESS SPECIFIED<br>.XX ± .03<br>.XXX ± .005<br>.XXXX ± .0005<br>ANGLES: | <b>TROMPETER</b><br>RF connectivity | PL3455ACP/S  |              |
| DWN DKC 12-3-92  | MATERIAL                            | CODE IDENT   | DRAWING NO.  |
| CHK <i>OK</i>  |                                     | 14949        | 310-0067     |
| ENGR   | SCALE 4/1                           | DATE 10-7-87 | SHEET 1 OF 2 |
| APPR <i>OK</i>   | NEXT ASSY                           |              |              |

# RED INDICATES ORIGINAL

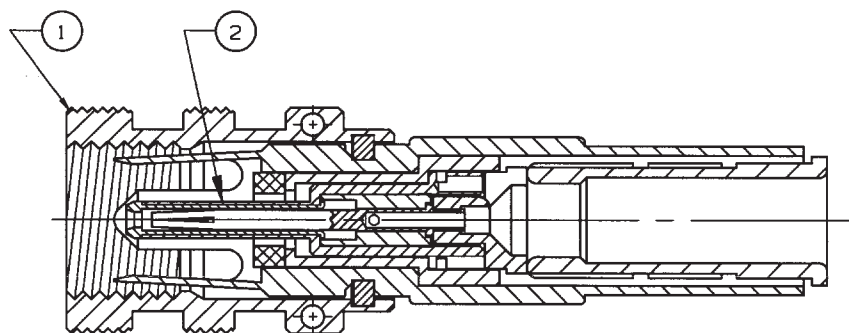
|        |             |  |           |    |             |          |          |      |
|--------|-------------|--|-----------|----|-------------|----------|----------|------|
| DISK # | DWG<br>SIZE | DATA CONTAINED IN THIS DOCUMENT IS<br>PROPRIETARY TO TROMPETER ELECTRONICS INC.<br>AND SHALL NOT BE DISCLOSED, COPIED OR USED<br>FOR PROCUREMENT OR MANUFACTURE WITHOUT<br>EXPRESS WRITTEN PERMISSION. | REVISIONS |    |             | 310-0067 |          | SH 2 |
|        |             |  | REV       | EO | DESCRIPTION | DWN      | APPROVED | DATE |
| K 1    | B           |  |           |    |             |          |          |      |



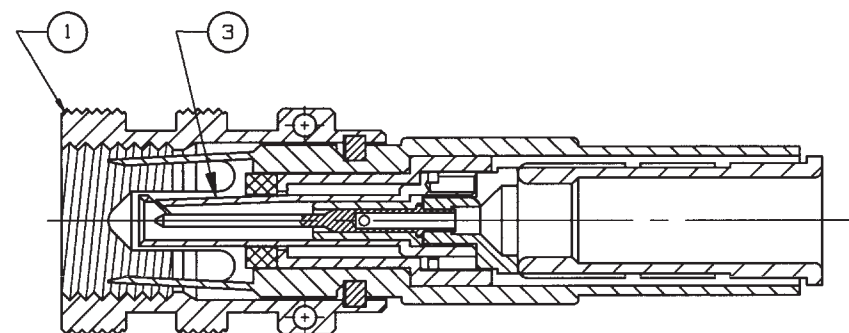
-1-303 SHOWN



-2-303 SHOWN




-1-221 SHOWN



-2-221 SHOWN

1 DASH NO SAME AS CABLE GROUP NO

|                              |                                |   |              |             |      |
|------------------------------|--------------------------------|---|--------------|-------------|------|
| 1                            | SP450AC - 1                    | 1   | 8-2496-      | 1           | 3    |
| 1                            | PS450AC - 1                    | 1   | 8-2495-      | 1           | 2    |
| 1                            | BODY ASSY. PL3455AC - 1        | 1   | 8-2554-      | 1           | 1    |
| -2                           | -1                             | DESCRIPTION   |              | PART NUMBER | ITEM |
| TOL UNLESS SPECIFIED         |                                |  <b>TROMPETER</b><br>RF connectivity<br><small>a cchc connectivity solutions brand</small> | PL3455ACP/S  |             |      |
| .XX ±                        |                                |   |              |             |      |
| .XXX ±                       |                                |   |              |             |      |
| .XXXX ±                      |                                |   |              |             |      |
| ANGLES ±                     |                                |   |              |             |      |
| DWN DKC 12-3-92              |                                | MATERIAL  | CODE IDENT   | DRAWING NO. | REV  |
| CHK <u>DG</u> <u>12/4/92</u> |                                | _____   | 14949        | 310-0067    | F    |
| ENGR                         |                                |   |              |             |      |
| ASSY                         | APPR <u>KC</u> <u>12/29/92</u> | SCALE 4/1   | DATE 10-7-87 | SHEET 2     |      |

# Mouser Electronics

Authorized Distributor

Click to View Pricing, Inventory, Delivery & Lifecycle Information:

[Cinch Connectivity Solutions:](#)

[PL3455ACS-221](#)